

PREMIER OFFICE AND INDUSTRIAL SPACE FOR LEASE



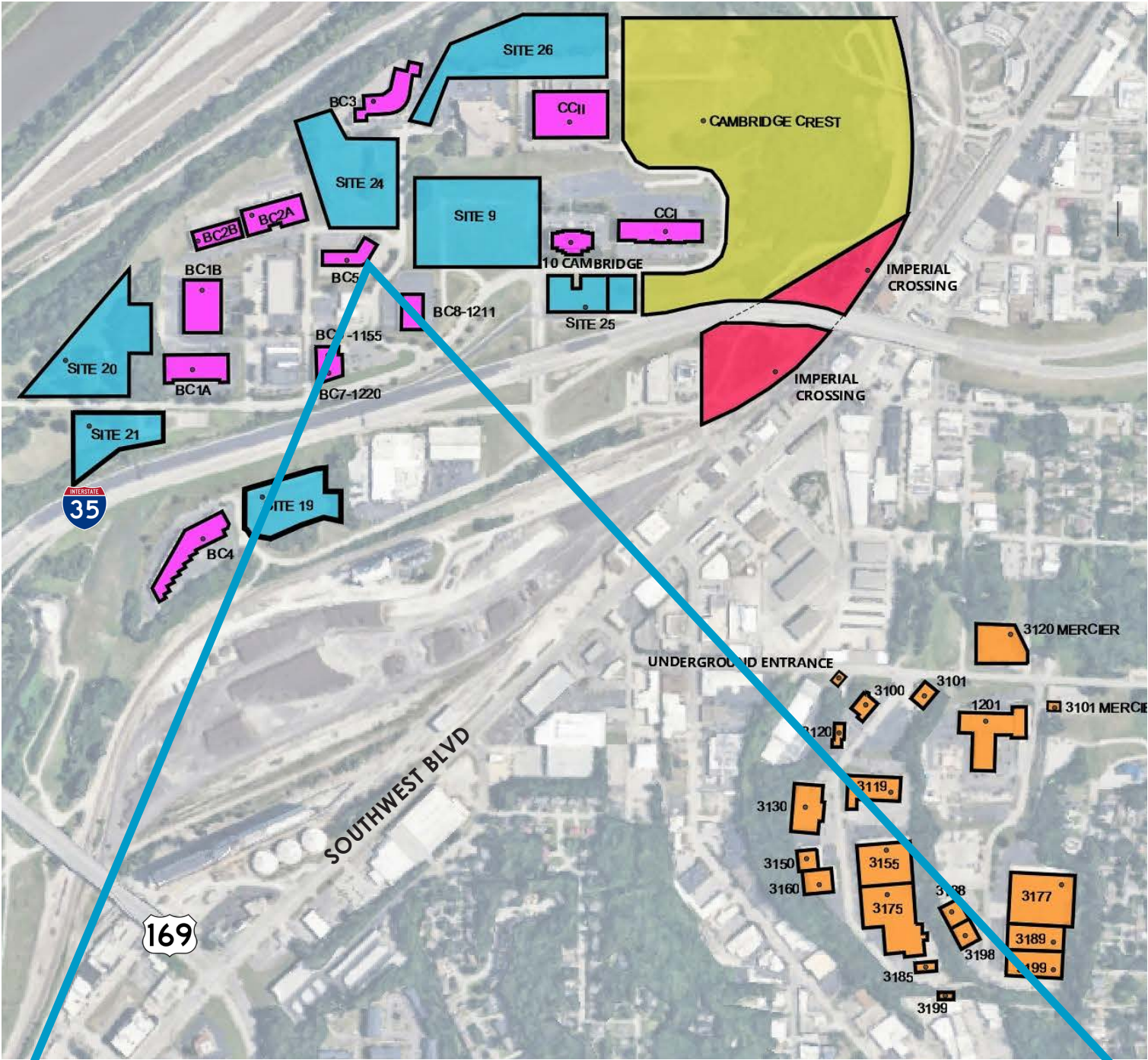
SPACE HIGHLIGHTS

- **2,378 SF Available**
- **Free, Convenient On-Site Parking**
- Positioned in a **well-maintained** and **secured** business park setting
- Accommodates large and small businesses
- Appropriate for light manufacturing, showroom and warehouse/flex applications
- **Clear visibility** and **instant accessibility** to I-35
- **Great location** central to the city's major thoroughfares; moments from the Plaza, Crown Center, Westport and Downtown

LEASING CONTACT

MOLLY CRAWFORD MUNNINGHOFF
P (816) 701-5013
mcrawford@copaken-brooks.com

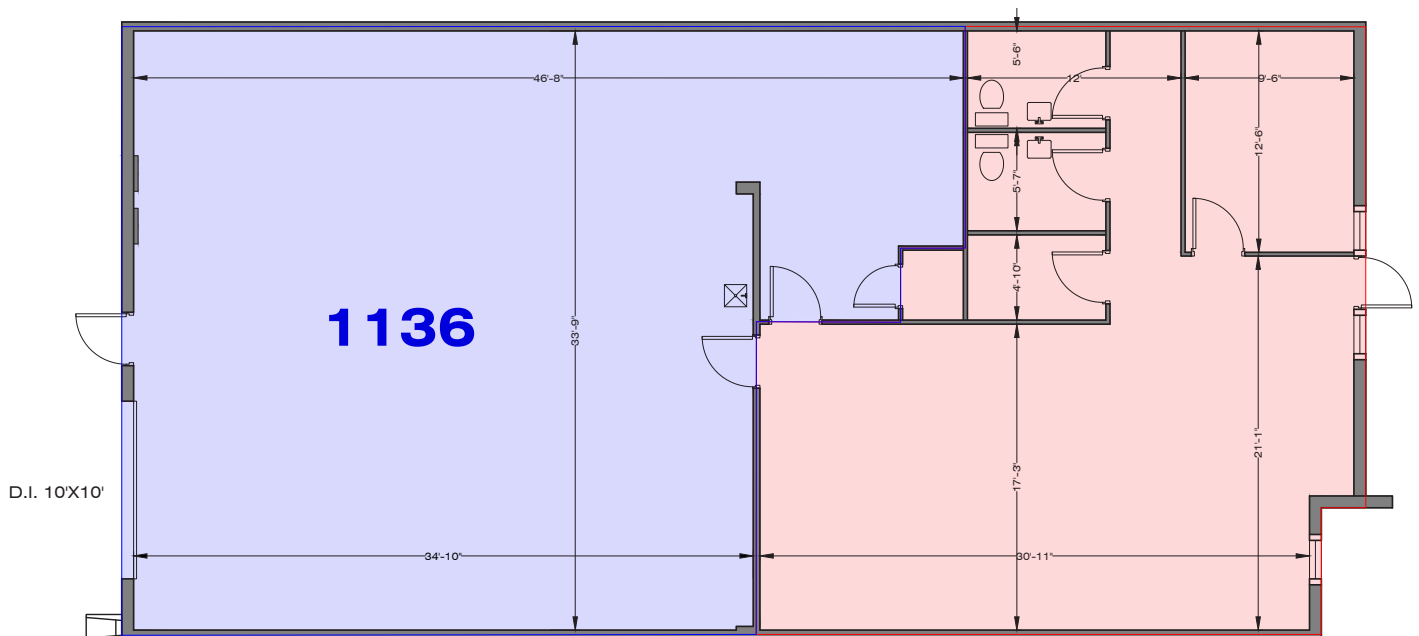
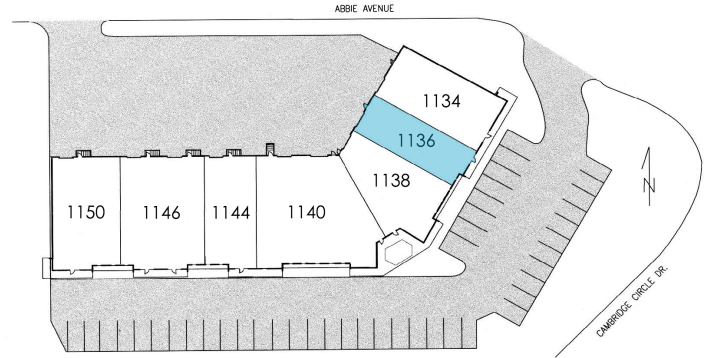
LOCATION



1136 W CAMBRIDGE CIR DR

BUSINESS CENTER 5

Total SF Available	2,378 SF
Office SF	976 SF
Warehouse SF	1,402 SF
Drive In Doors	1 (10' x 10')
Clear Height	16'



PICTURES



PREMIER OFFICE AND INDUSTRIAL SPACE FOR LEASE



LEASING CONTACT

MOLLY CRAWFORD MUNNINGHOFF

P (816) 701-5013

mcrawford@copaken-brooks.com

All information furnished regarding property for sale or lease is from sources deemed reliable, but no warranty or representation is made as to the accuracy thereof and the same is subject to errors, omissions, changes of prices, rental or other conditions, prior sale or lease, or withdrawal without notice.