

BELLA ROE PLAZA - RETAIL SPACE FOR LEASE

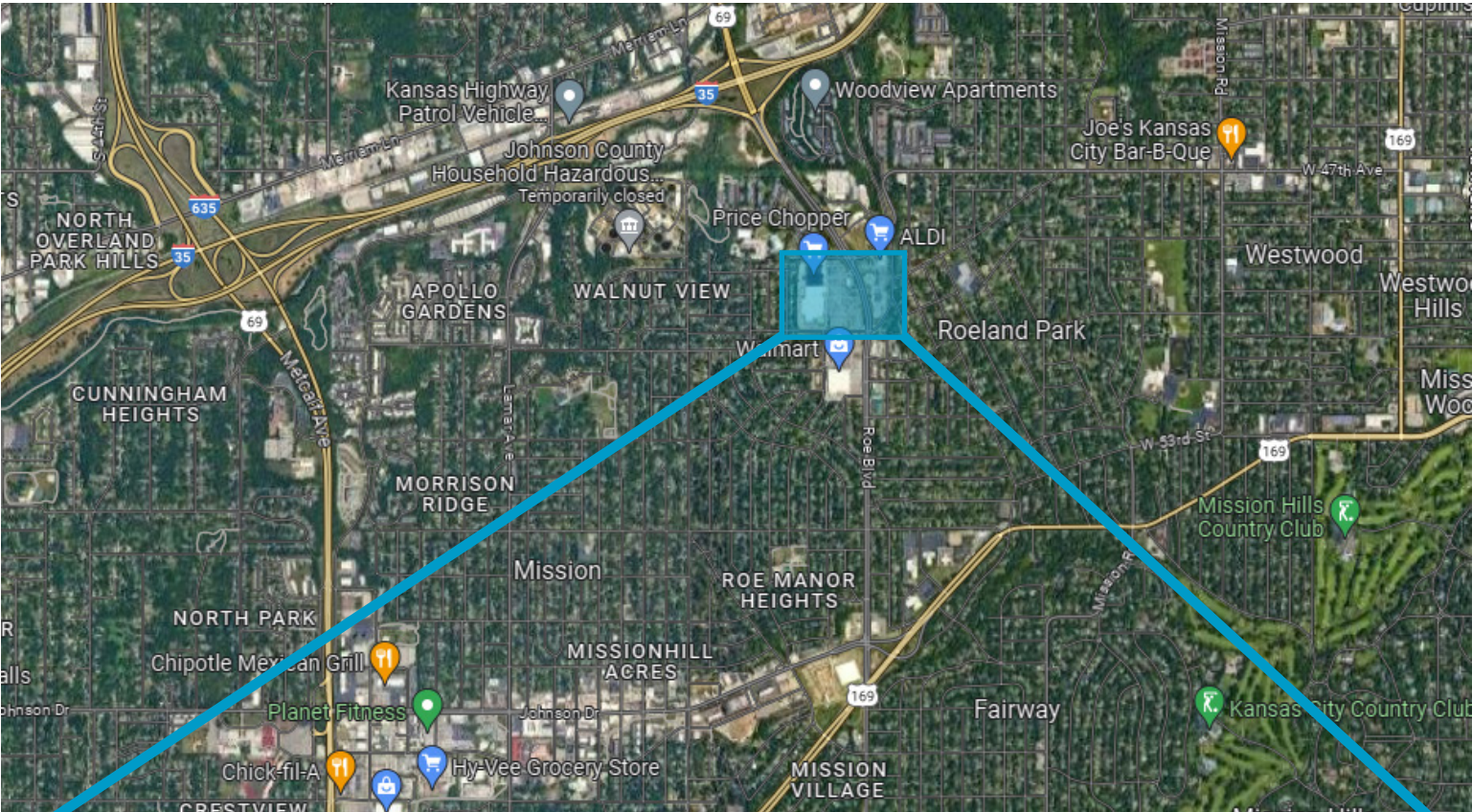


SPACE HIGHLIGHTS


- **1,243 SF Space Available**
- Anchored by Price Chopper & Lowe's
- Adjacent to Walmart, Aldi, & Walgreens
- Nearby Menard's Coming Soon
- Great visibility to over 22,000 CPD along Roe
- Excellent highway access to I-35
- Surrounded by densely populated residential neighborhoods

LEASING CONTACT

ERIN JOHNSTON
P (816) 701-5028
ejohnston@copaken-brooks.com



Demographic Summary Report

Bella Roe Plaza									
4980-4988 Roe Blvd, Roeland Park, KS 66205									
Building Type: General Retail			Total Available: 1,640 SF						
Secondary: -			% Leased: 83.27%						
GLA: 9,800 SF			Rent/SF/Yr: Negotiable						
Year Built: 2006									
Radius		1 Mile		3 Mile		5 Mile			
Population									
2028 Projection		12,352		91,709		262,340			
2023 Estimate		12,272		91,245		259,798			
2010 Census		11,823		89,355		249,548			
Growth 2023 - 2028		0.65%		0.51%		0.98%			
Growth 2010 - 2023		3.80%		2.12%		4.11%			
2023 Population by Hispanic Origin		3,148		17,028		49,020			
2023 Population		12,272		91,245		259,798			
White		10,679	87.02%	77,877	85.35%	196,962	75.81%		
Black		765	6.23%	5,891	6.46%	43,069	16.58%		
Am. Indian & Alaskan		76	0.62%	675	0.74%	2,193	0.84%		
Asian		357	2.91%	4,080	4.47%	9,582	3.69%		
Hawaiian & Pacific Island		8	0.07%	92	0.10%	295	0.11%		
Other		387	3.15%	2,631	2.88%	7,697	2.96%		
U.S. Armed Forces		43		87		180			
Households									
2028 Projection		5,503		42,485		116,334			
2023 Estimate		5,473		42,228		115,097			
2010 Census		5,297		41,241		110,235			
Growth 2023 - 2028		0.55%		0.61%		1.07%			
Growth 2010 - 2023		3.32%		2.39%		4.41%			
Owner Occupied		3,349	61.19%	24,284	57.51%	65,246	56.69%		
Renter Occupied		2,123	38.79%	17,944	42.49%	49,851	43.31%		
2023 Households by HH Income		5,471		42,228		115,097			
Income: <\$25,000		936	17.11%	6,873	16.28%	22,326	19.40%		
Income: \$25,000 - \$50,000		1,146	20.95%	7,588	17.97%	22,944	19.93%		
Income: \$50,000 - \$75,000		757	13.84%	7,022	16.63%	20,524	17.83%		
Income: \$75,000 - \$100,000		1,088	19.89%	6,472	15.33%	15,471	13.44%		
Income: \$100,000 - \$125,000		605	11.06%	4,290	10.16%	11,096	9.64%		
Income: \$125,000 - \$150,000		419	7.66%	2,666	6.31%	6,531	5.67%		
Income: \$150,000 - \$200,000		270	4.94%	2,786	6.60%	7,390	6.42%		
Income: \$200,000+		250	4.57%	4,531	10.73%	8,815	7.66%		
2023 Avg Household Income		\$82,363		\$97,711		\$86,610			
2023 Med Household Income		\$71,967		\$73,639		\$64,254			

BELLA ROE PLAZA - RETAIL SPACE FOR LEASE



LEASING CONTACT

ERIN JOHNSTON

P (816) 701-5028

ejohnston@copaken-brooks.com

All information furnished regarding property for sale or lease is from sources deemed reliable, but no warranty or representation is made as to the accuracy thereof and the same is subject to errors, omissions, changes of prices, rental or other conditions, prior sale or lease, or withdrawal without notice.