

OFFICE BUILDING FOR SALE



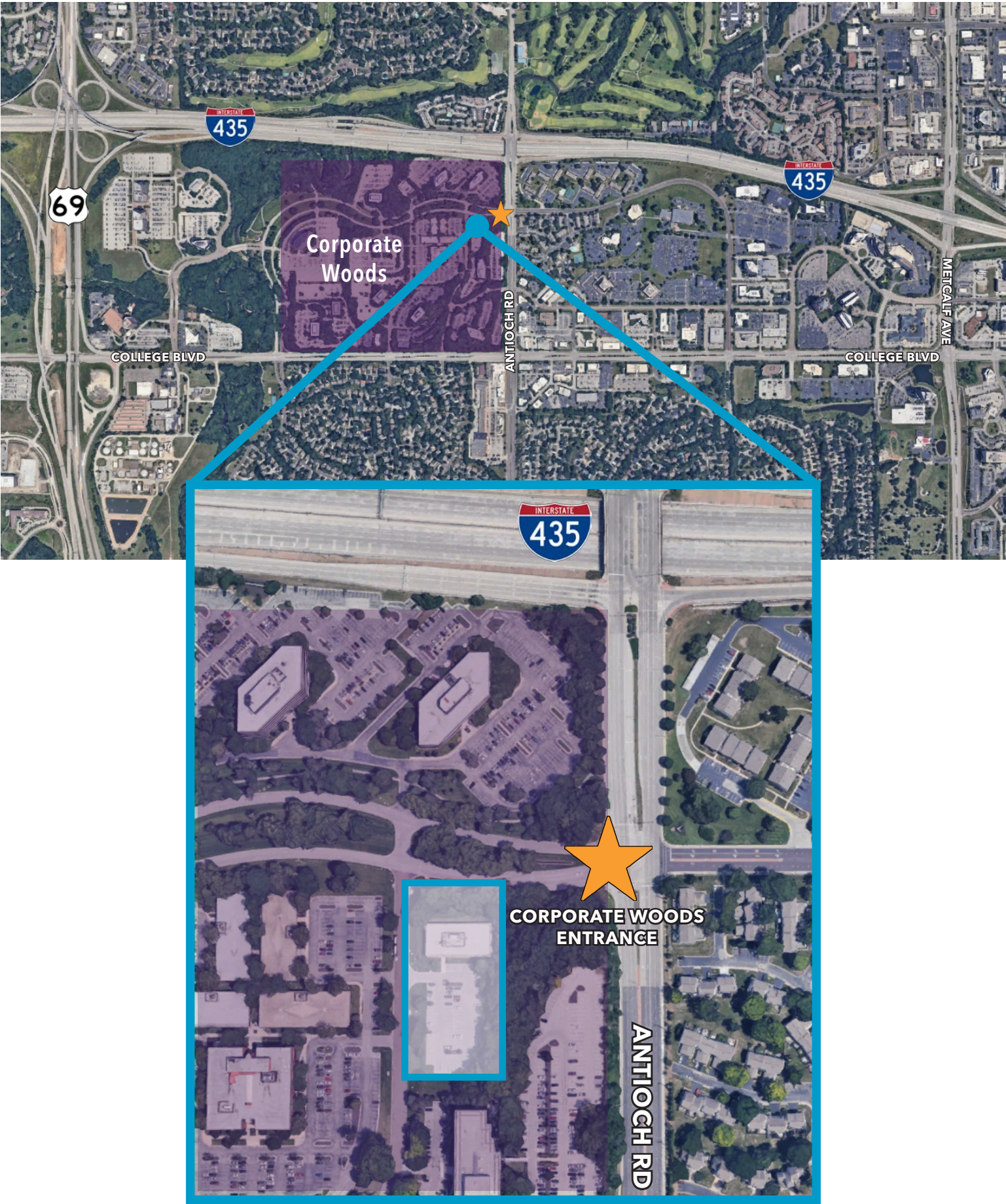
SPACE HIGHLIGHTS

- **20,214 SF**
- \$2,600,000
- 2.34 Acres
- Positioned at the Corporate Woods Indian Creek Pkwy/Antioch Rd main entrance for easy access
- Located just off the I-435/Antioch exchange
- Large, private parking lot
- 24- Hour Controlled Access

SALE CONTACT

MOLLY CRAWFORD MUNNINGHOFF
P (816) 701-5013
mcrawford@copaken-brooks.com

LOCATION

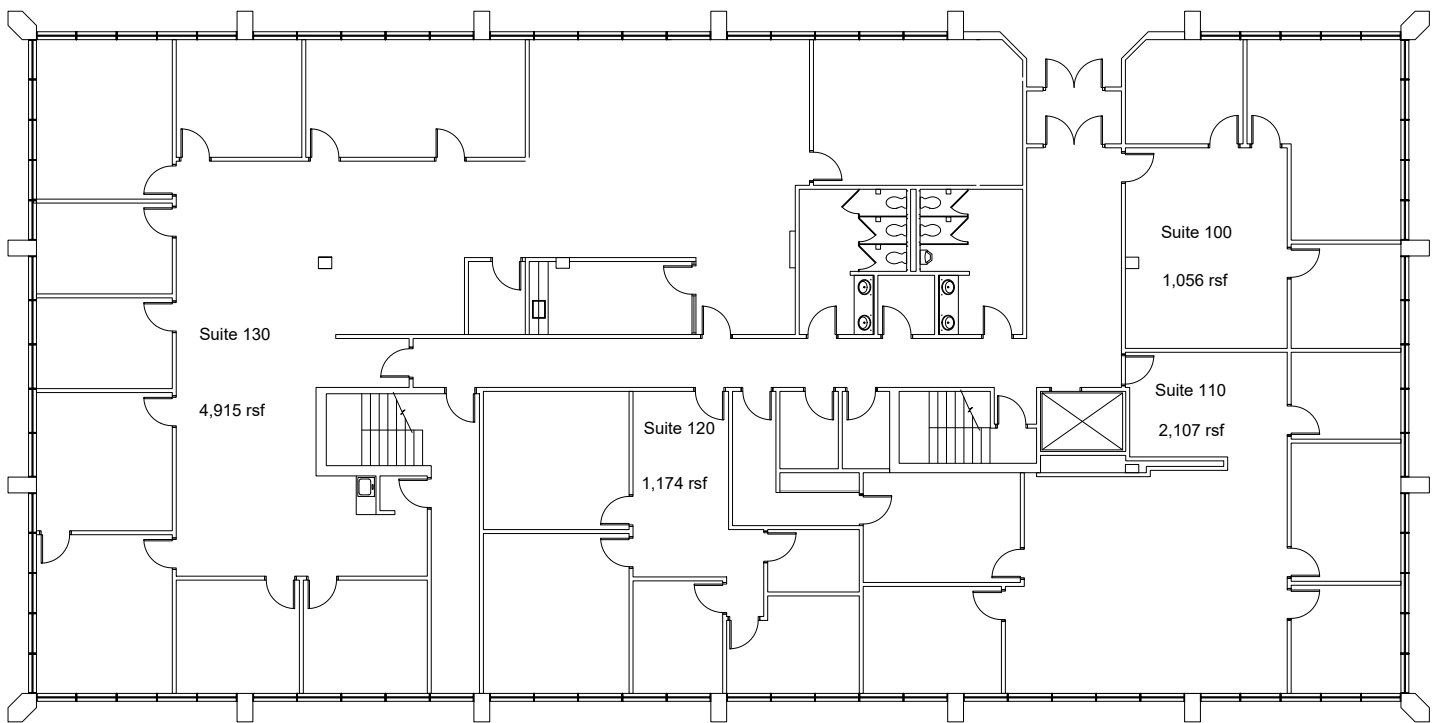


LISTING INFORMATION

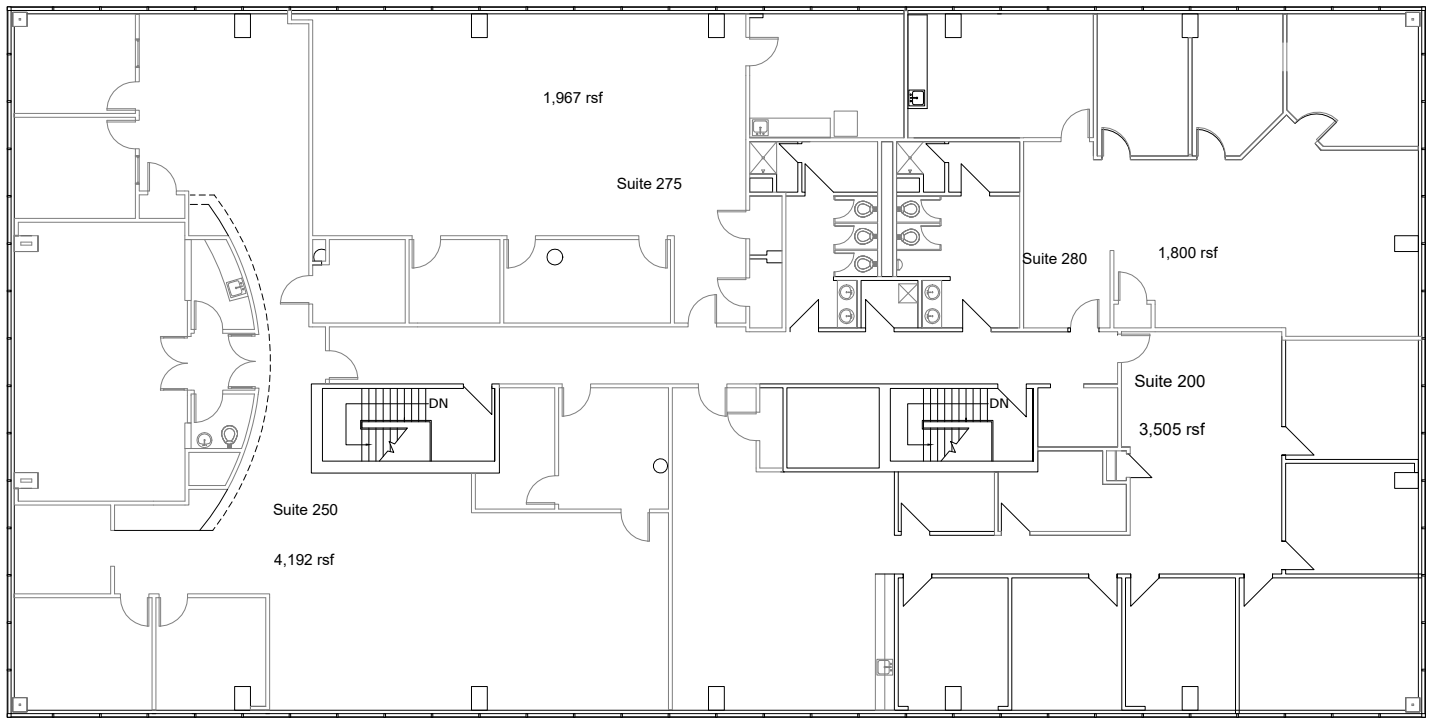
Building Name	Corporate Woods 11
Address	10875 Benson Dr Overland Park, Kansas 66210
Pricing	\$2,600,000.00
Lot Size	2.34 AC
Building SF	20,214 SF
Stories	2
Class	B
Year Built	1980
Parking	85 surface spaces available; 4 per 1,000 SF
Fiber	Google Fiber
Elevators	1
Security	24-Hour Controlled Access
Zoning	CPO



First Floor



Second Floor





OFFICE BUILDING FOR SALE



SALE CONTACT

MOLLY CRAWFORD MUNNINGHOFF

P (816) 701-5013

mcrawford@copaken-brooks.com

All information furnished regarding property for sale or lease is from sources deemed reliable, but no warranty or representation is made as to the accuracy thereof and the same is subject to errors, omissions, changes of prices, rental or other conditions, prior sale or lease, or withdrawal without notice.