

BUILD TO SUIT MEDICAL, OFFICE, BANK

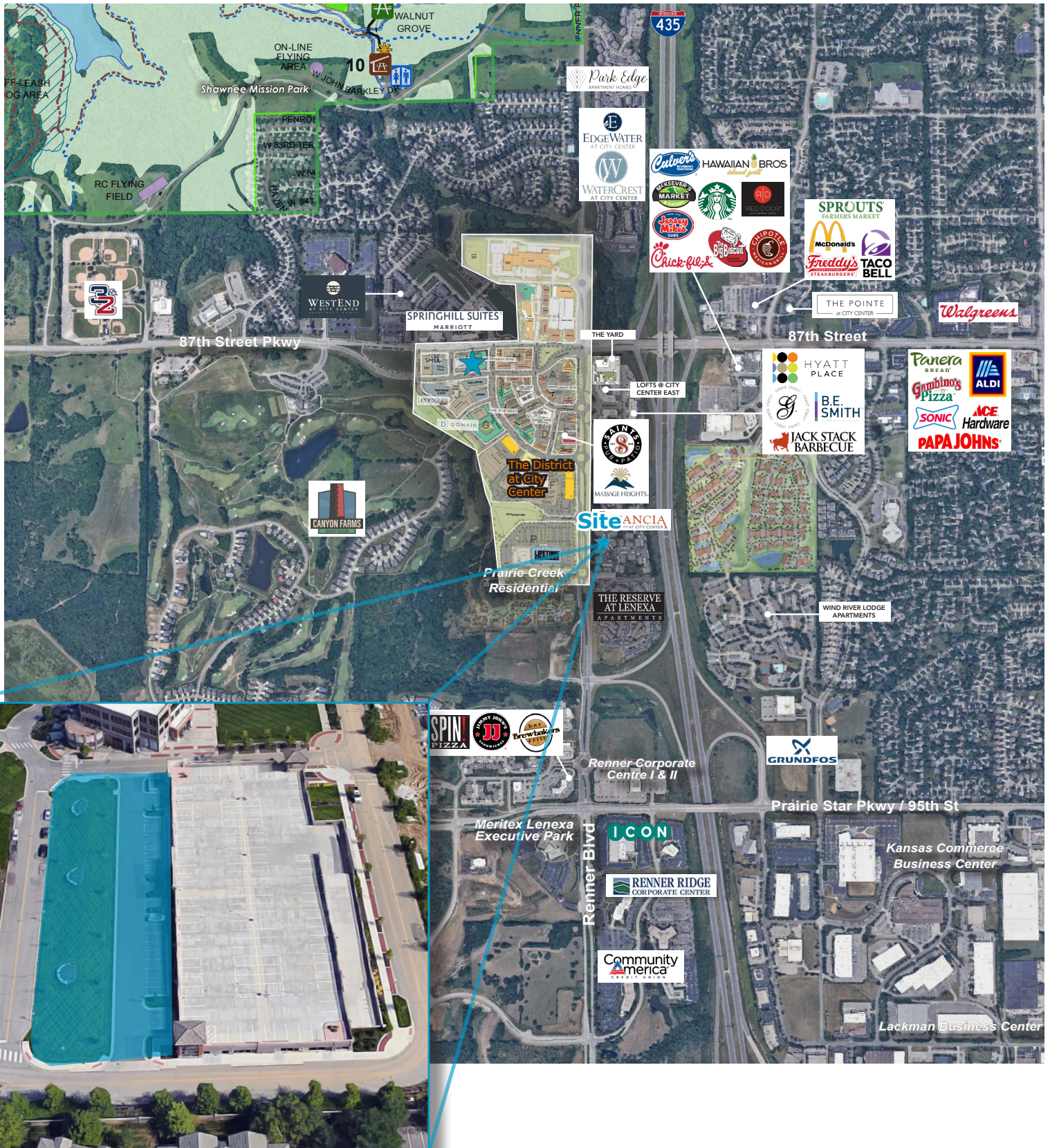


LAND HIGHLIGHTS

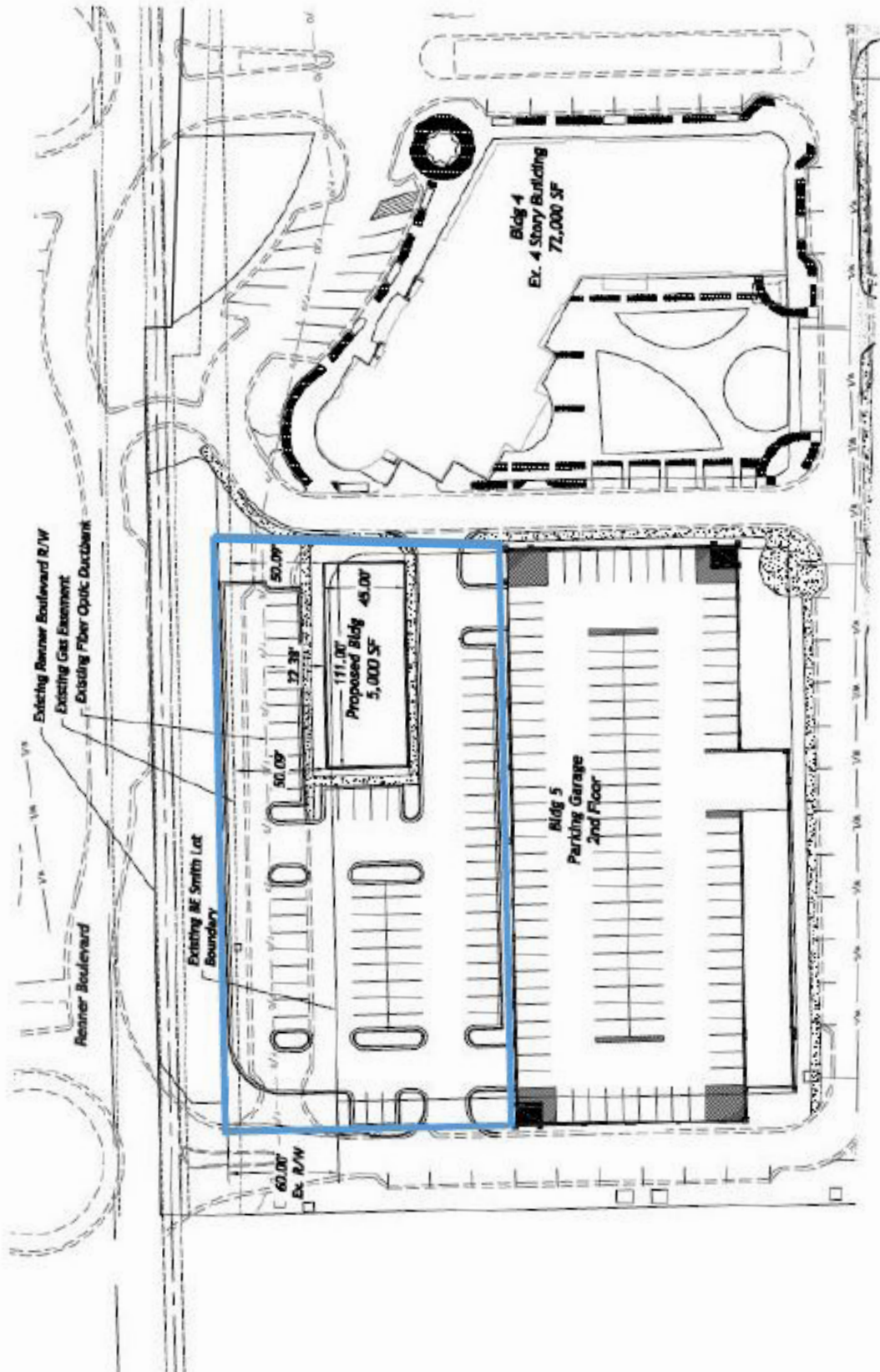
- Approximately 36,000 \pm SF site
- Great site for office, retail, bank, or medical
- Approved for free standing 5,000 \pm SF build to suit
- CC Zoning
- Part of City Center Lenexa's 2 million SF mixed-use development
- **Build to Suit Lease Price - Negotiable**

CONTACT

JOHN D. COE, SIOR, CCIM
P (816) 701-5064
jcoe@copaken-brooks.com



Radius	1 Mile		3 Mile		5 Mile	
Population						
2024 Projection	9,114		48,227		173,964	
2019 Estimate	8,764		46,521		167,341	
2010 Census	8,240		44,578		157,661	
Growth 2019 - 2024	3.99%		3.67%		3.96%	
Growth 2010 - 2019	6.36%		4.36%		6.14%	
2019 Population by Hispanic Origin	450		3,356		16,157	
2019 Population	8,764		46,521		167,341	
White	7,059	80.55%	40,043	86.08%	141,697	84.68%
Black	907	10.35%	3,104	6.67%	12,285	7.34%
Am. Indian & Alaskan	34	0.39%	178	0.38%	827	0.49%
Asian	458	5.23%	1,941	4.17%	7,552	4.51%
Hawaiian & Pacific Island	2	0.02%	24	0.05%	101	0.06%
Other	304	3.47%	1,232	2.65%	4,879	2.92%
U.S. Armed Forces	0		10		62	
Households						
2024 Projection	3,813		19,484		70,480	
2019 Estimate	3,674		18,795		67,808	
2010 Census	3,499		18,003		63,942	
Growth 2019 - 2024	3.78%		3.67%		3.94%	
Growth 2010 - 2019	5.00%		4.40%		6.05%	
Owner Occupied	1,521	41.40%	11,006	58.56%	41,757	61.58%
Renter Occupied	2,153	58.60%	7,789	41.44%	26,050	38.42%
2019 Households by HH Income	3,674		18,798		67,807	
Income: <\$25,000	326	8.87%	1,763	9.38%	7,971	11.76%
Income: \$25,000 - \$50,000	777	21.15%	3,882	20.65%	14,393	21.23%
Income: \$50,000 - \$75,000	747	20.33%	3,278	17.44%	12,587	18.56%
Income: \$75,000 - \$100,000	545	14.83%	2,494	13.27%	9,644	14.22%
Income: \$100,000 - \$125,000	387	10.53%	2,209	11.75%	7,900	11.65%
Income: \$125,000 - \$150,000	349	9.50%	1,875	9.97%	5,733	8.45%
Income: \$150,000 - \$200,000	331	9.01%	1,619	8.61%	4,887	7.21%
Income: \$200,000+	212	5.77%	1,678	8.93%	4,692	6.92%
2019 Avg Household Income	\$93,782		\$101,409		\$92,574	
2019 Med Household Income	\$74,561		\$79,771		\$72,964	



BUILD TO SUIT MEDICAL OFFICE / BANK



CONTACT

JOHN D. COE, SIOR, CCIM
P (816) 701-5064
jcoe@copaken-brooks.com

All information furnished regarding property for sale or lease is from sources deemed reliable, but no warranty or representation is made as to the accuracy thereof and the same is subject to errors, omissions, changes of prices, rental or other conditions, prior sale or lease, or withdrawal without notice.