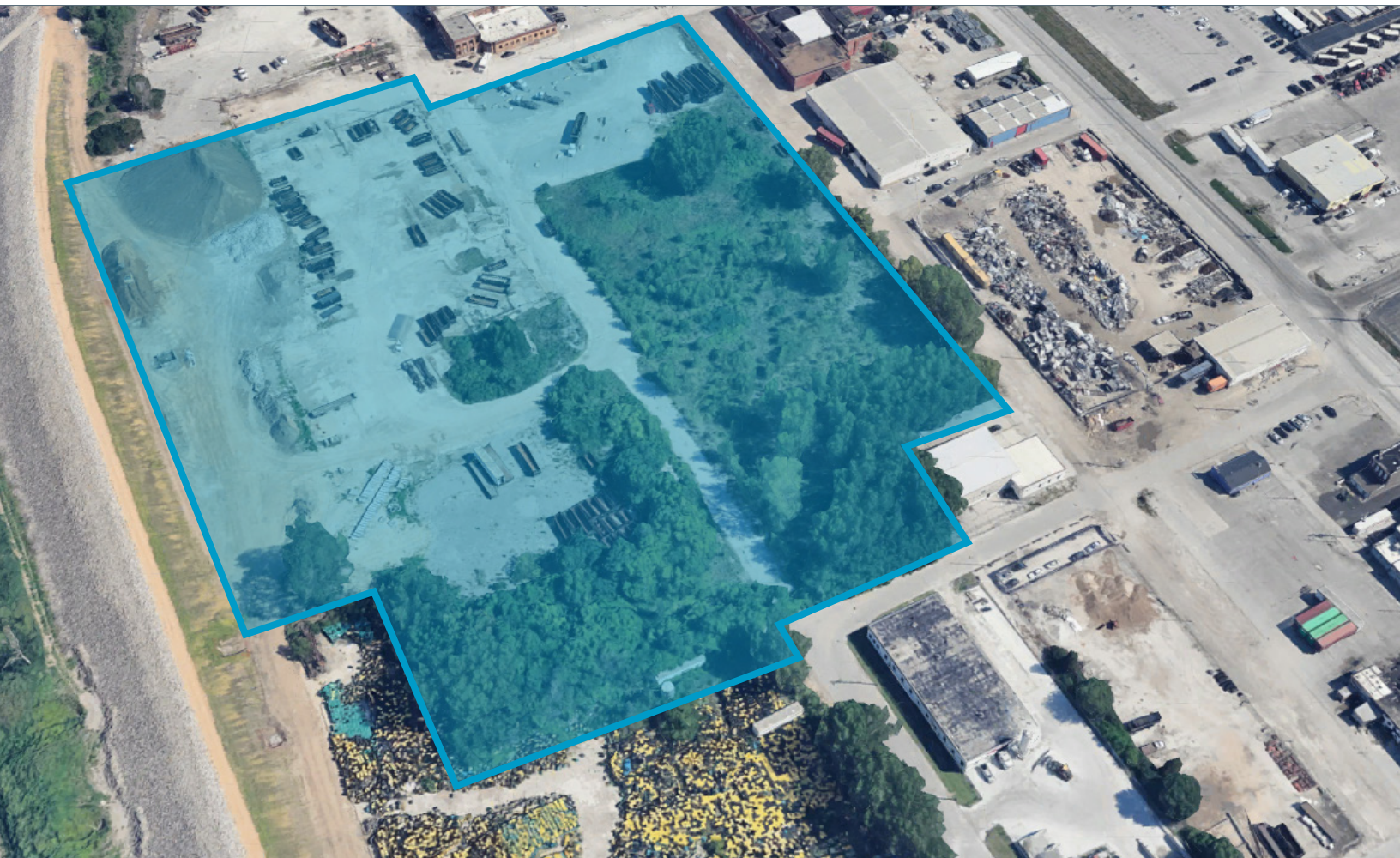


HEAVY INDUSTRIAL LAND FOR SALE

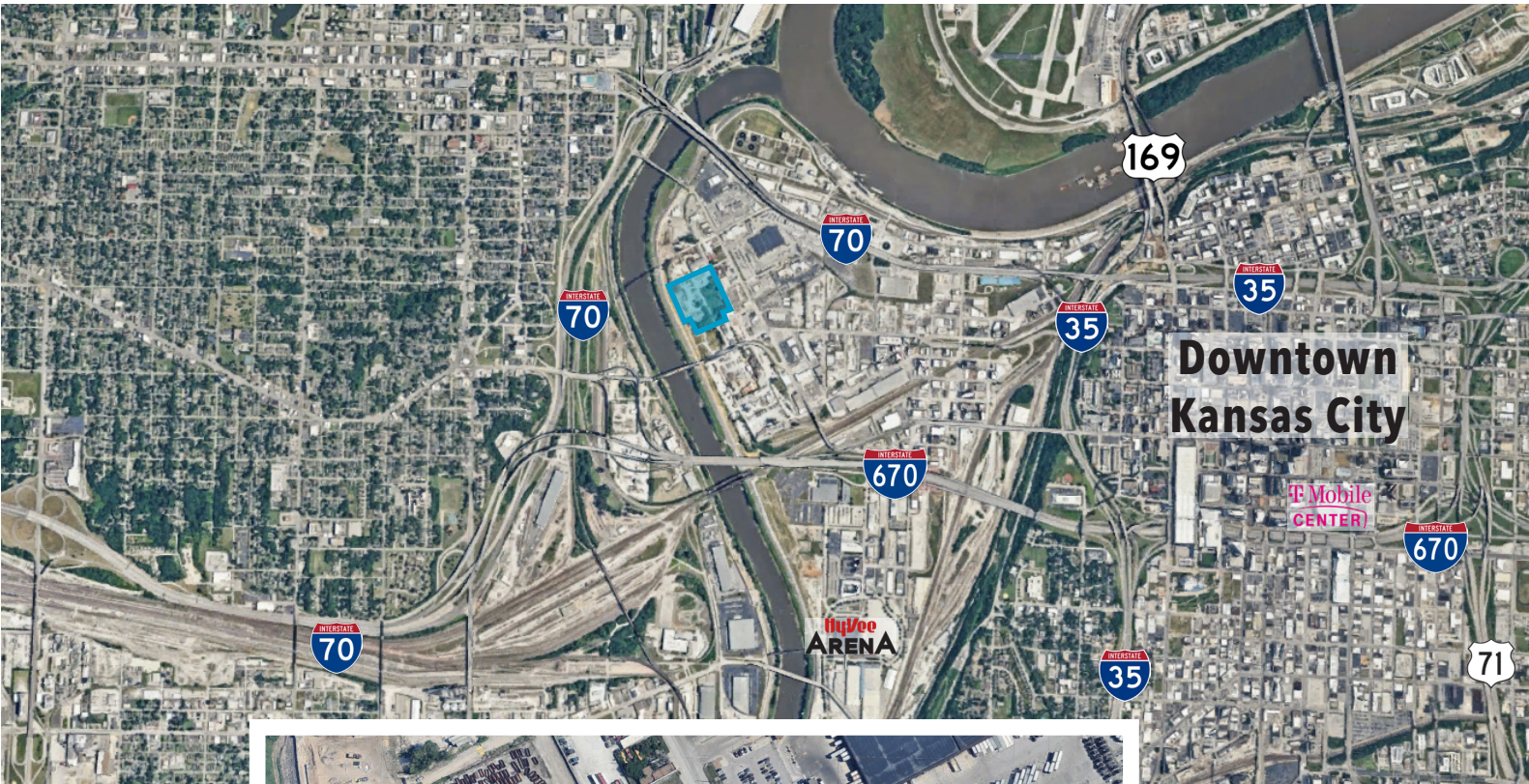


PROPERTY HIGHLIGHTS

- **\$2,515,000**
- **13.09 Acres**
- Partially fenced
- Utilities on site
- M-3 zoning
- Mixture of concrete, hard packed gravel, and raw surface area
- Central city location with excellent access to I-670, I-70, I-35, I-29, and I-635

SALE CONTACT

JOHN D. COE, SIOR, CCIM
P (816) 701-5064
jcoe@copaken-brooks.com



LISTING INFORMATION

Acres	13.09 Acres
Zoning	M-3 Zoning
Utilities	On Site
Fenced	Partially Fenced