

PREMIER OFFICE AND INDUSTRIAL SPACE FOR LEASE



SPACE HIGHLIGHTS

- **2,409 SF Available**
- **Free, Convenient On-Site Parking**
- Positioned in a **well-maintained** and **secured business park** setting
- Accommodates large and small businesses
- Appropriate for light manufacturing, showroom and warehouse/flex applications
- **Google Fiber Available**
- **Clear visibility** and **instant accessibility** to I-35
- **Great location** central to the city's major thoroughfares; moments from the Plaza, Crown Center, Westport and Downtown

LEASING CONTACT

JEREMIAH DEAN, CCIM

P (816) 701-5012

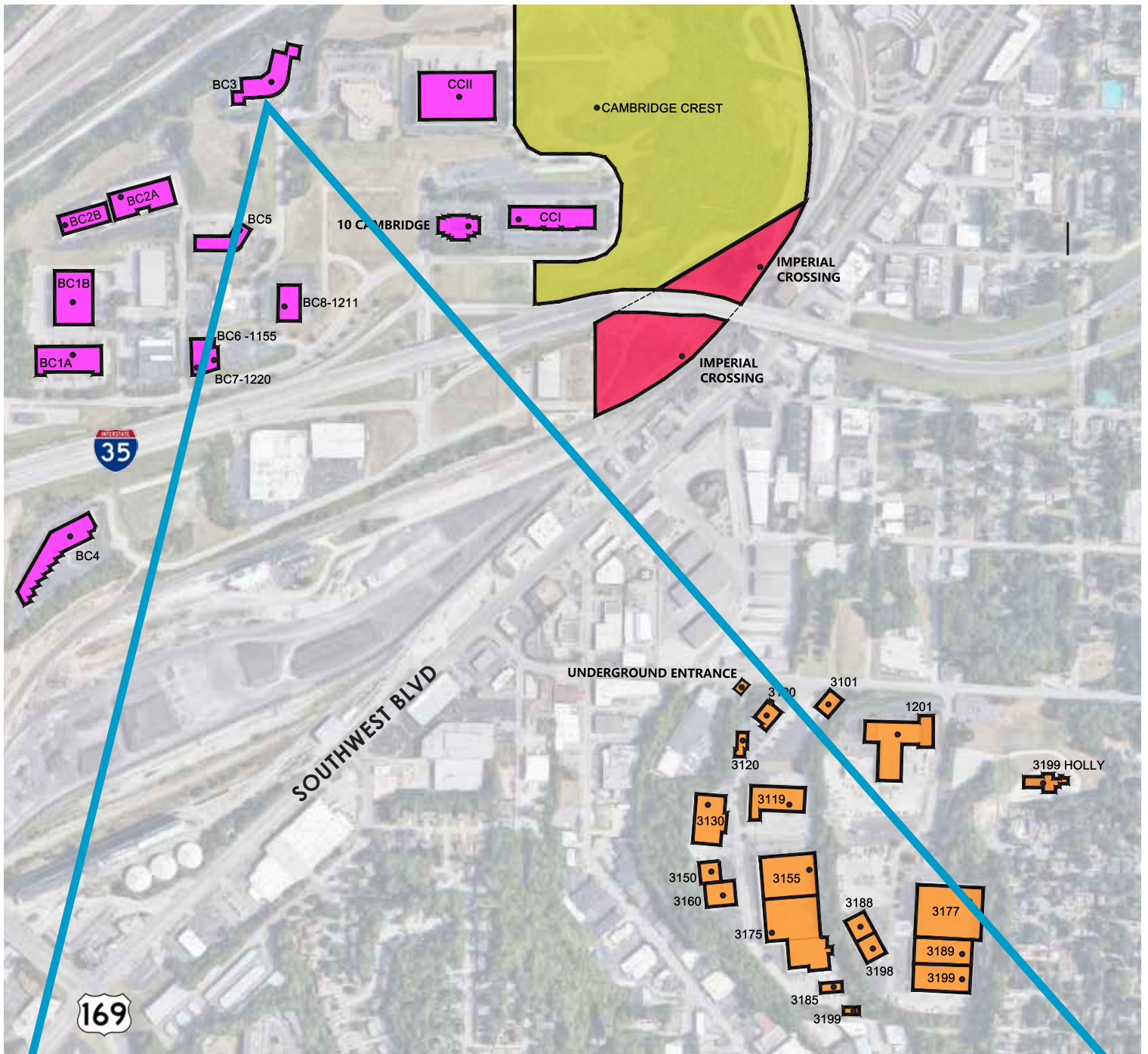
jdean@copaken-brooks.com

MOLLY CRAWFORD MUNNINGHOFF

P (816) 701-5013

mcrawford@copaken-brooks.com

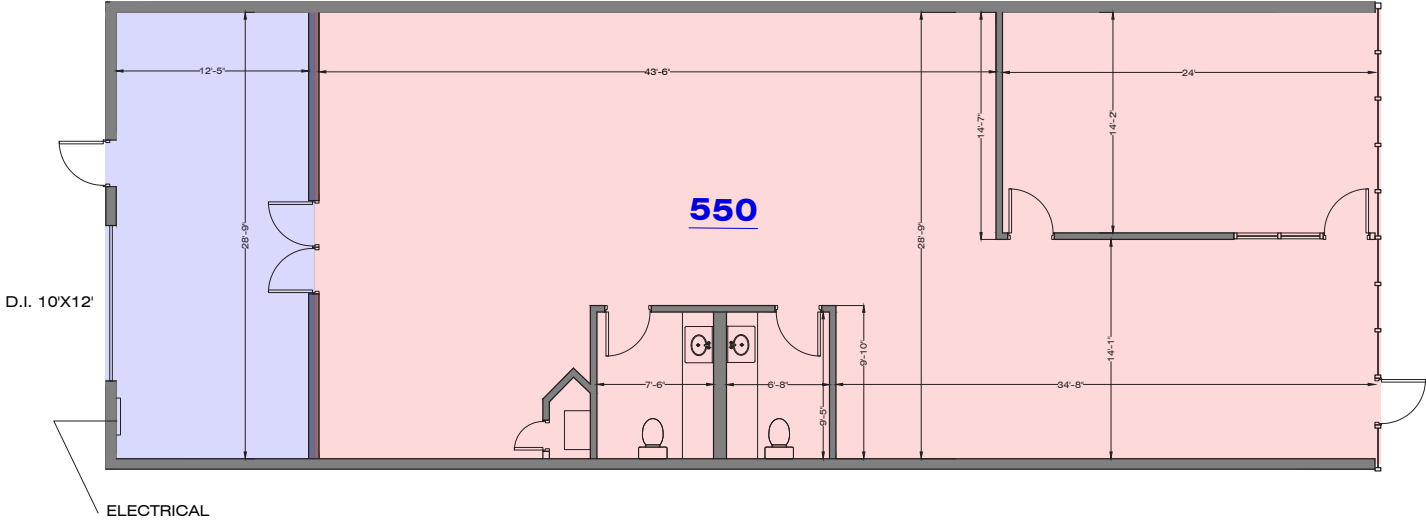
LOCATION



SUITE 550

BUSINESS CENTER 3

Total SF Available	2,409 SF
Office SF	2,011 SF
Warehouse SF	398 SF
Drive In Door	1 (10' x 12')
Clear Height	16'
Notes	Google Fiber Availability



PREMIER OFFICE AND INDUSTRIAL SPACE FOR LEASE



LEASING CONTACT

JEREMIAH DEAN, CCIM

P (816) 701-5012

jdean@copaken-brooks.com

MOLLY CRAWFORD MUNNINGHOFF

P (816) 701-5013

mcrawford@copaken-brooks.com

All information furnished regarding property for sale or lease is from sources deemed reliable, but no warranty or representation is made as to the accuracy thereof and the same is subject to errors, omissions, changes of prices, rental or other conditions, prior sale or lease, or withdrawal without notice.