

PREMIER OFFICE AND INDUSTRIAL SPACE FOR LEASE



SPACE HIGHLIGHTS

- **4,216 - 22,058 SF Available (Divisible or Contiguous)**
- **Free, Convenient On-Site Parking**
- Positioned in a **well-maintained** and **secured** business park setting
- Accommodates large and small businesses
- Appropriate for light manufacturing, showroom and warehouse/flex applications
- **Google Fiber Available**
- **Clear visibility** and **instant accessibility** to I-35
- **Great location** central to the city's major thoroughfares; moments from the Plaza, Crown Center, Westport and Downtown

LEASING CONTACT

JEREMIAH DEAN, CCIM

P (816) 701-5012

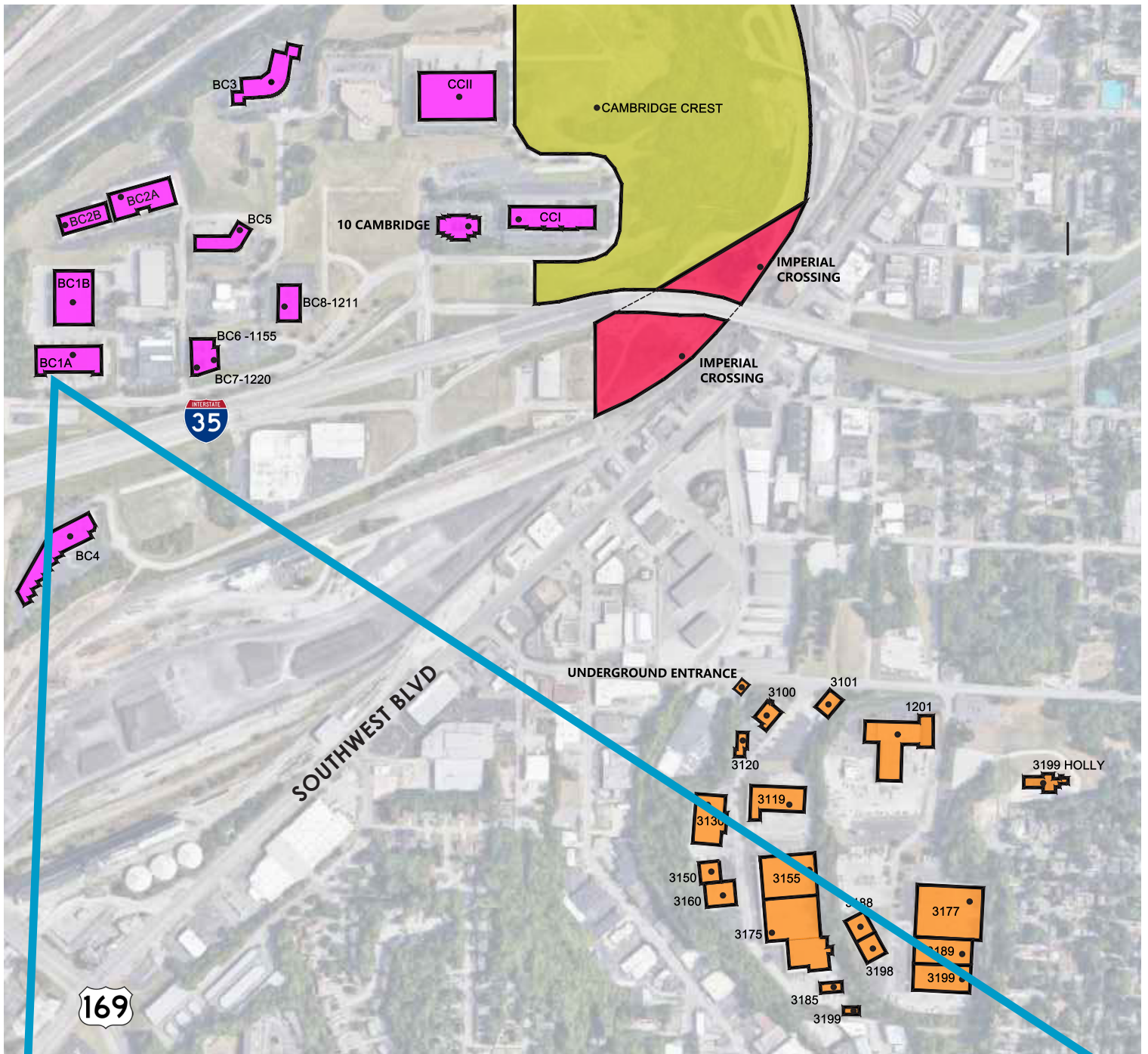
jdean@copaken-brooks.com

MOLLY CRAWFORD MUNNINGHOFF

P (816) 701-5013

mcrawford@copaken-brooks.com

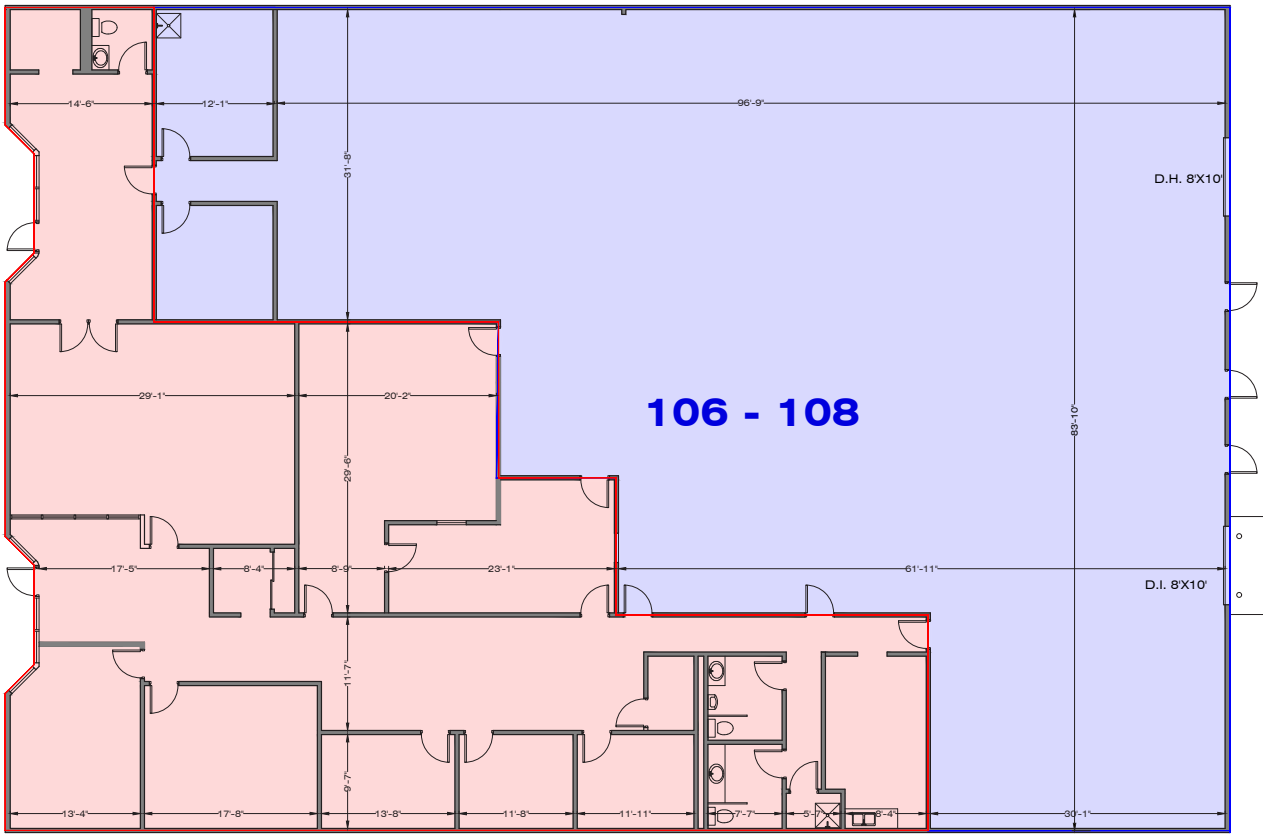
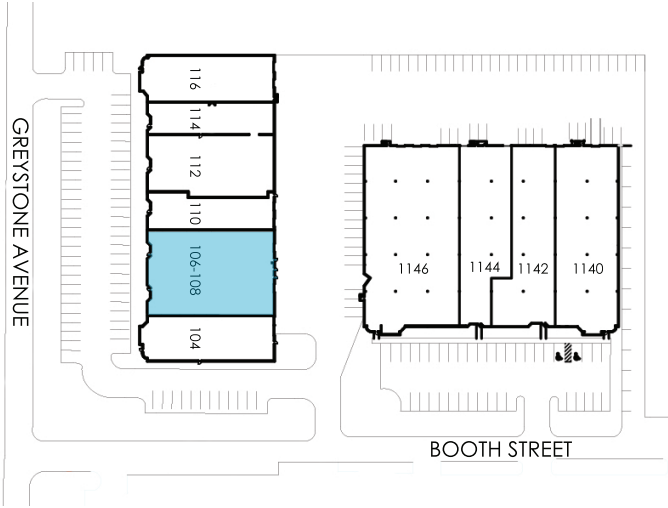
LOCATION



106 - 108 GREYSTONE

BUSINESS CENTER 1A

Total SF Available	10,423 SF
Office SF	4,154 SF
Warehouse SF	6,269 SF
Dock High Doors	1 (8' x 10')
Drive-In Doors	1 (8' x 10') - Ramped
Clear Height	16'
Notes	Highway Visibility Google Fiber Available



AVAILABLE SPACE

110 GREYSTONE

BUSINESS CENTER 1A

Total SF Available **4,216 SF**

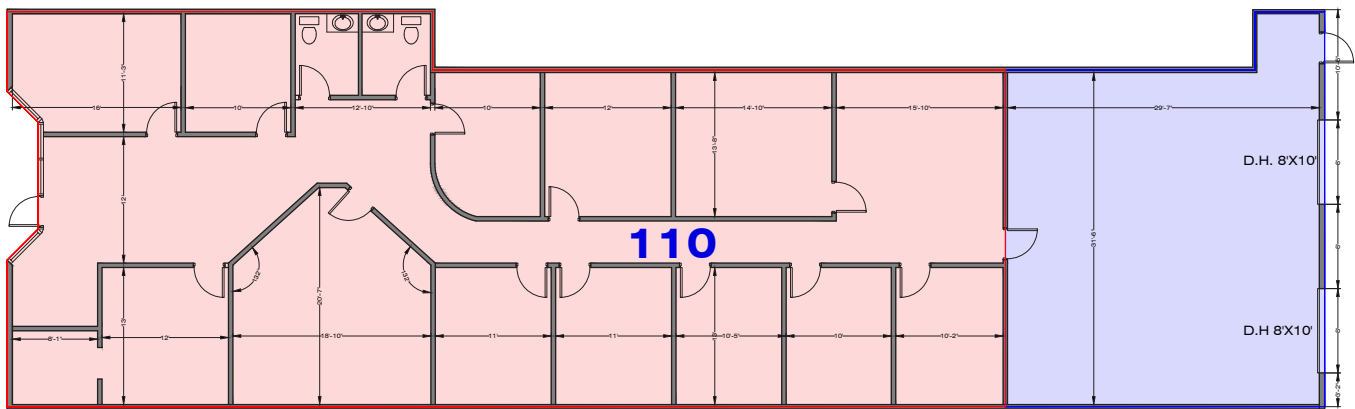
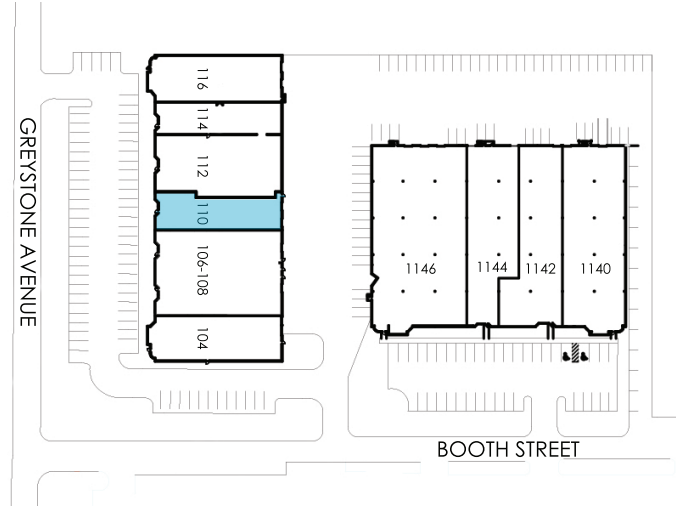
Office SF 3,212 SF

Warehouse SF 1,004 SF

Dock High Doors 2 (8' x 10')

Clear Height 16'

Notes Highway Visibility
Google Fiber Available



112 GREYSTONE

BUSINESS CENTER 1A

Total SF Available **7,419 SF**

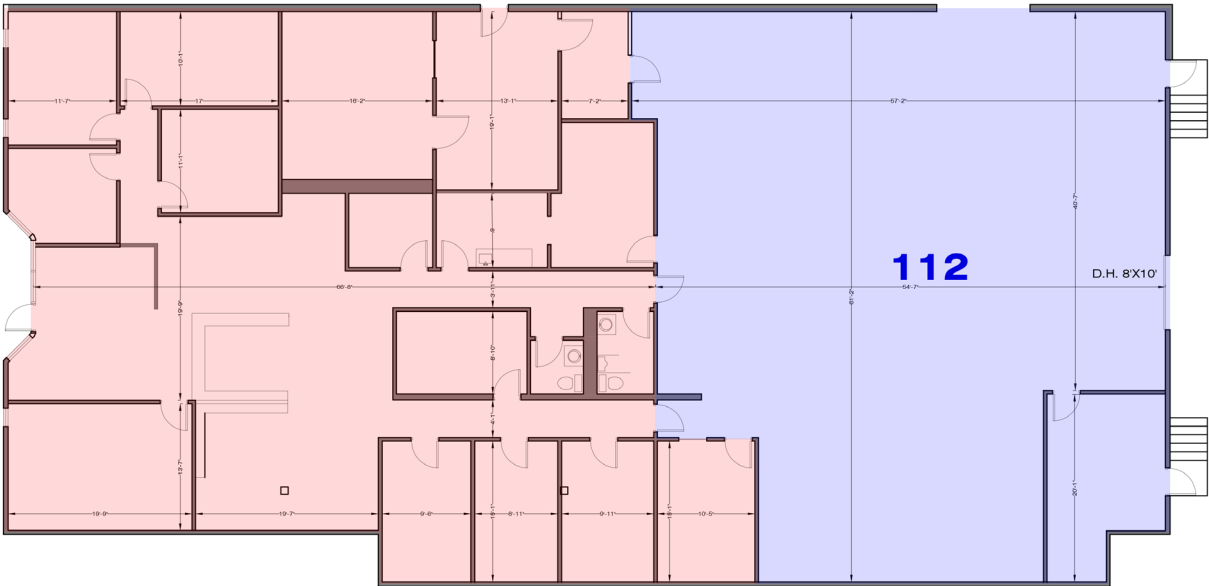
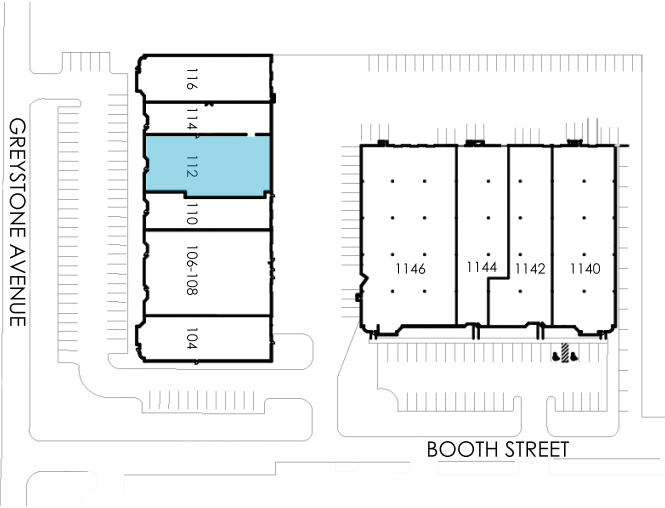
Office SF 4,187 SF

Warehouse SF 3,232 SF

Dock High Doors 1 (8' x 10')

Clear Height 16'

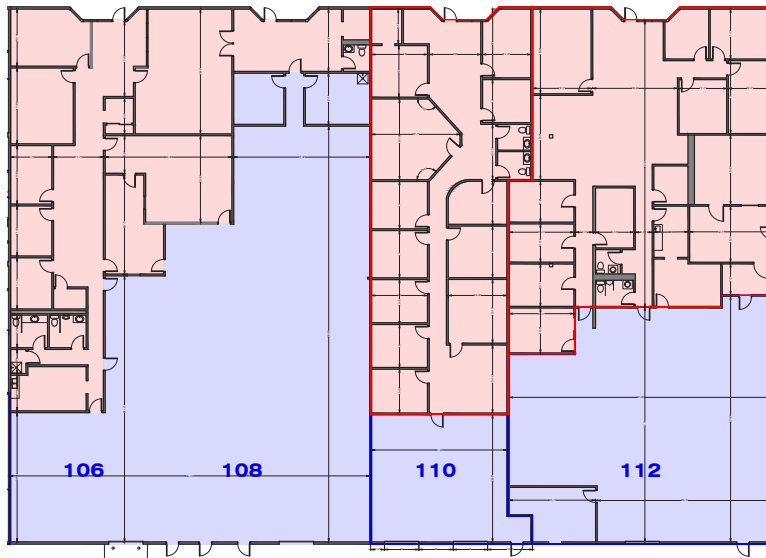
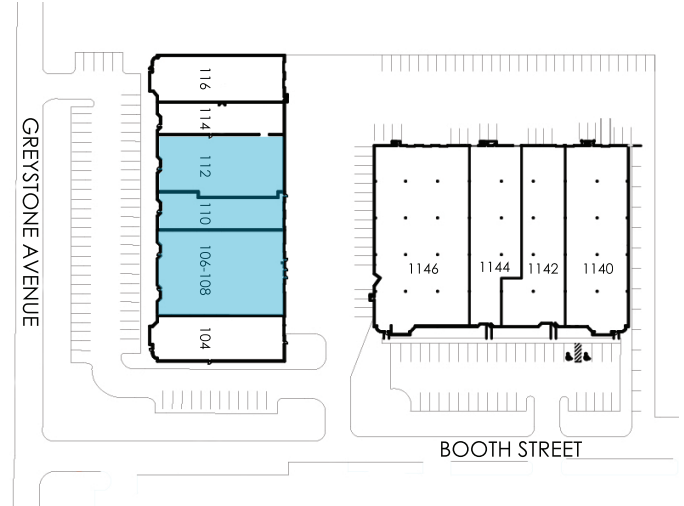
Notes Highway Visibility
Google Fiber Available



106-112 GREYSTONE

BUSINESS CENTER 1A

Total SF Available	22,058 SF
Office SF	14,610 SF
Warehouse SF	7,448 SF
Dock High Doors	4 (8' x 10')
Drive-In Doors	1 (8' x 10') - Ramped
Clear Height	16'
Notes	Highway Visibility Google Fiber Available



1146 BOOTH

BUSINESS CENTER 1B

Total SF Available 16,931 SF

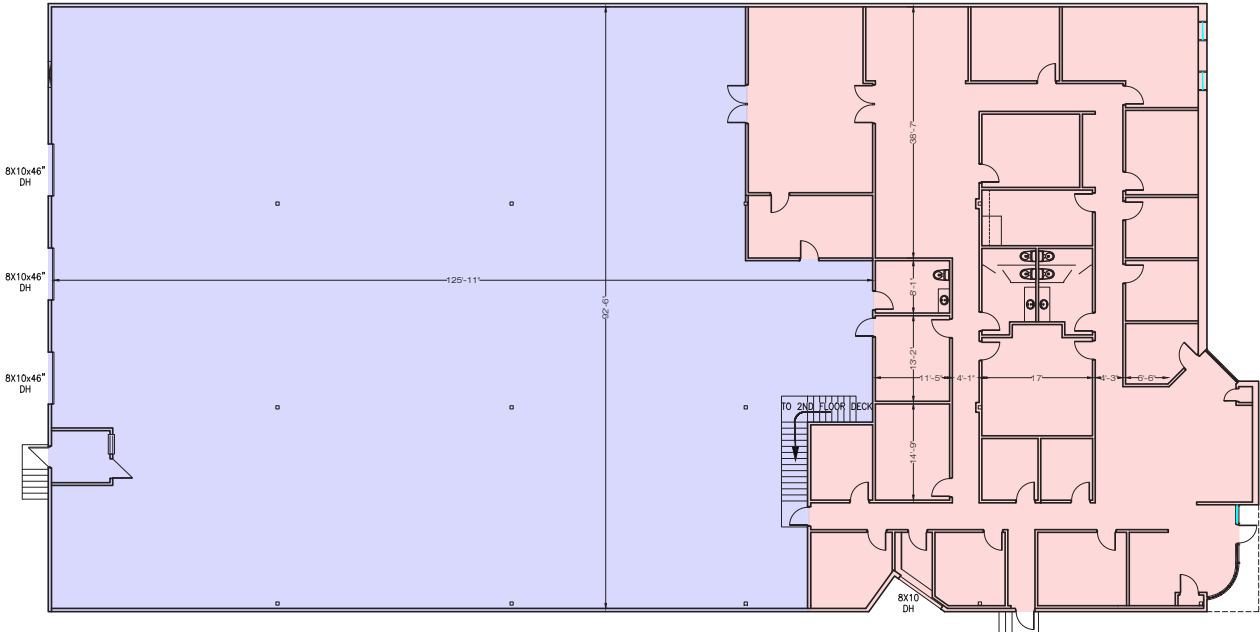
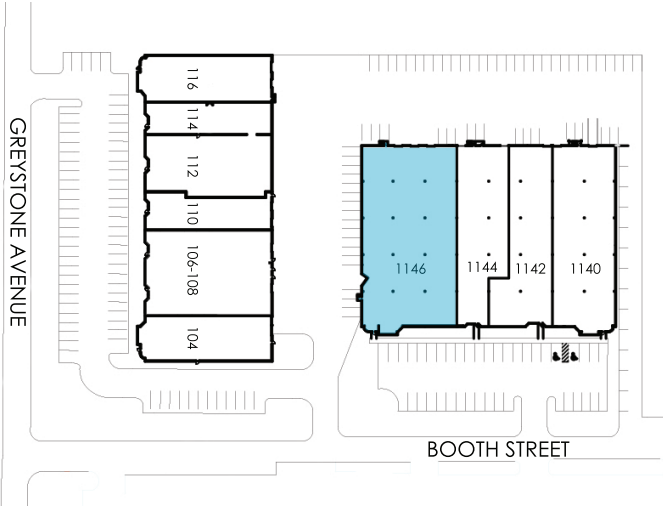
Office SF 5,874 SF

Warehouse SF 11,057 SF

Dock High Doors 3 (8' x 10')

Clear Height 23'

Notes Highway Visibility
Google Fiber Available



PREMIER OFFICE AND INDUSTRIAL SPACE FOR LEASE



LEASING CONTACT

JEREMIAH DEAN, CCIM

P (816) 701-5012

jdean@copaken-brooks.com

MOLLY CRAWFORD MUNNINGHOFF

P (816) 701-5013

mcrawford@copaken-brooks.com

All information furnished regarding property for sale or lease is from sources deemed reliable, but no warranty or representation is made as to the accuracy thereof and the same is subject to errors, omissions, changes of prices, rental or other conditions, prior sale or lease, or withdrawal without notice.