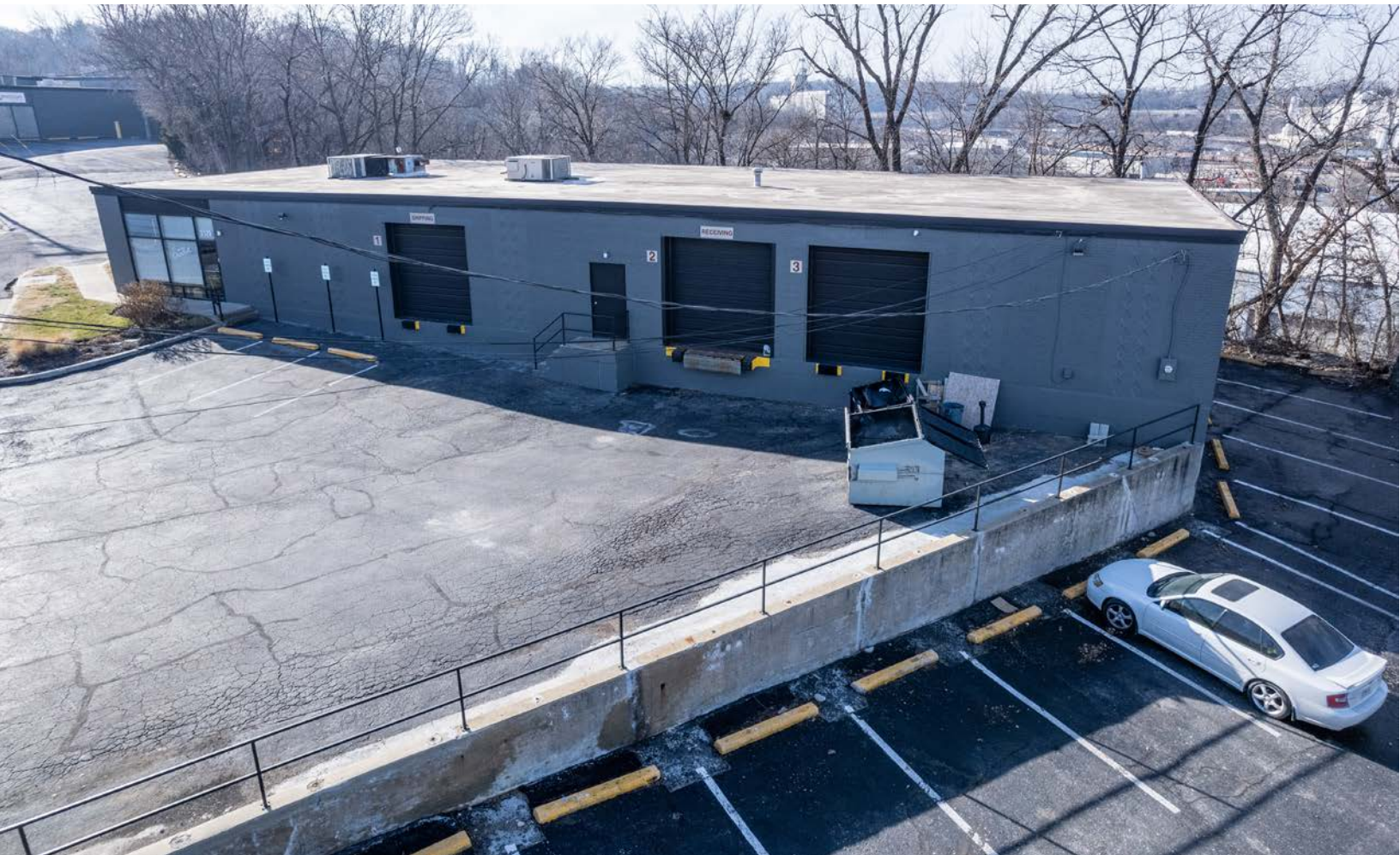


## PREMIER INDUSTRIAL & OFFICE SPACE FOR LEASE



### SPACE HIGHLIGHTS

- **6,000 SF Available**
- **Free, Convenient On-site Parking;** generous front and side lot parking
- **Google Fiber Available**
- Ideal for light manufacturing, fabrication or light retail operation desiring an outstanding Midtown location
- **Prominent signage** on busy 31st Street corridor
- Business park location with private streets; security patrolled with walkout/lockout service

### LEASING CONTACT

**JEREMIAH DEAN, CCIM**

P (816) 701-5012

jdean@copaken-brooks.com

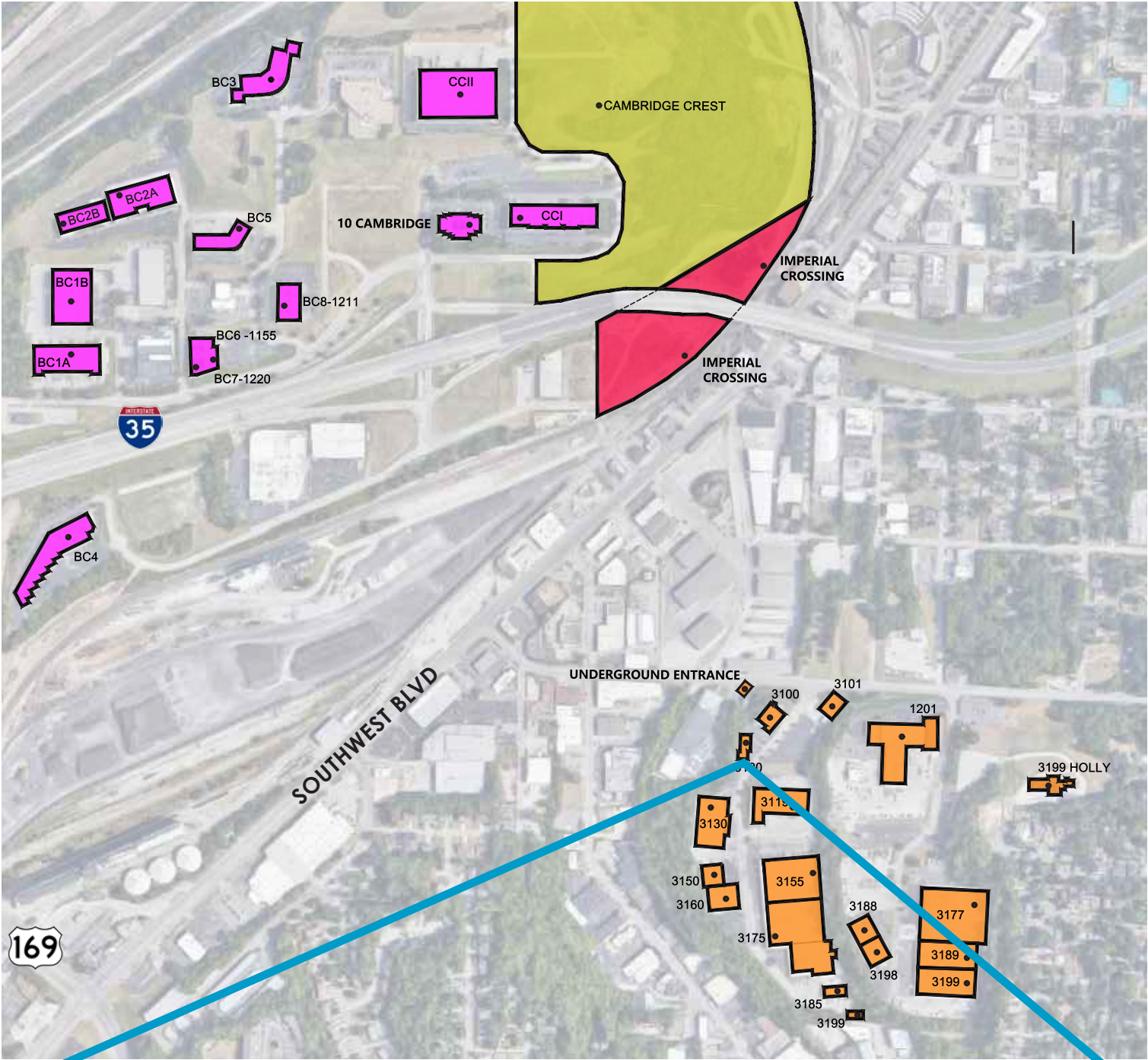
**MOLLY CRAWFORD MUNNINGHOFF**

P (816) 701-5013

mcrawford@copaken-brooks.com

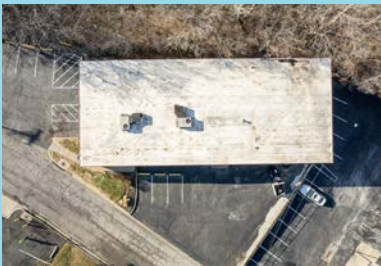
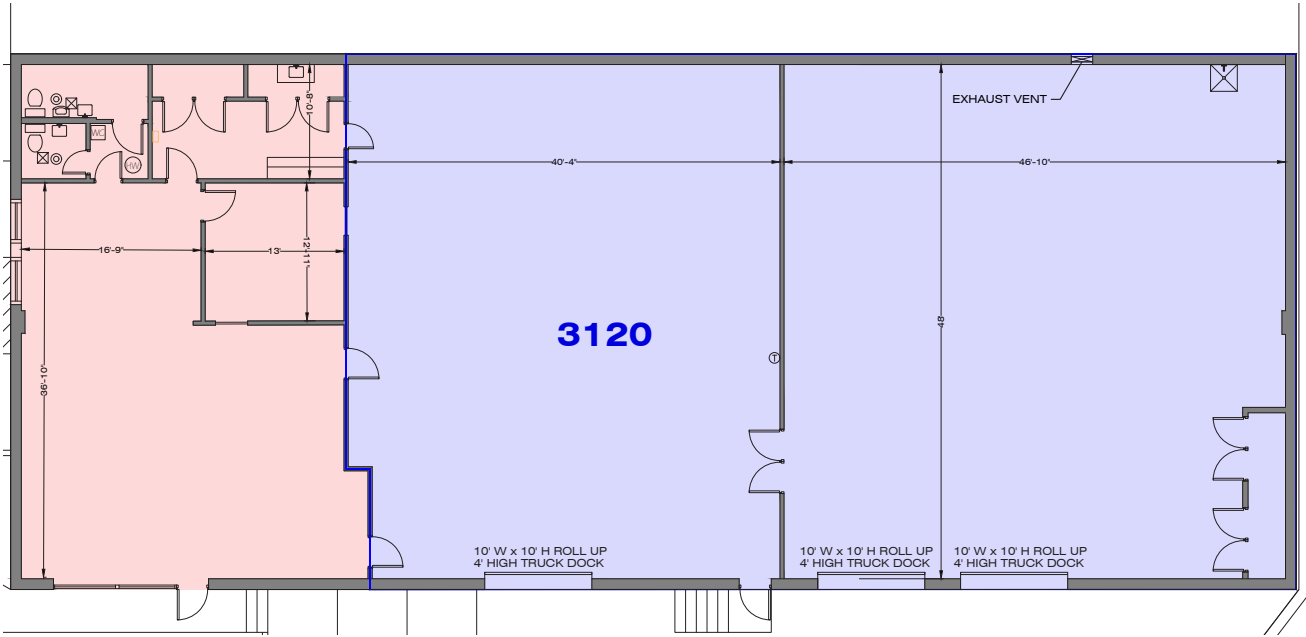


LOCATION



# 3120 TERRACE STREET

Total SF Available	6,000 SF
Office SF	1,590 SF
Warehouse SF	4,410 SF
Dock High Doors	3 (10'x10')
Notes	Google Fiber Available





# PREMIER INDUSTRIAL & OFFICE SPACE FOR LEASE



## LEASING CONTACT

**JEREMIAH DEAN, CCIM**

P (816) 701-5012

[jdean@copaken-brooks.com](mailto:jdean@copaken-brooks.com)

**MOLLY CRAWFORD MUNNINGHOFF**

P (816) 701-5013

[mcrawford@copaken-brooks.com](mailto:mcrawford@copaken-brooks.com)

All information furnished regarding property for sale or lease is from sources deemed reliable, but no warranty or representation is made as to the accuracy thereof and the same is subject to errors, omissions, changes of prices, rental or other conditions, prior sale or lease, or withdrawal without notice.