

## PREMIER OFFICE SPACE FOR LEASE



### SPACE HIGHLIGHTS

- **8,505 SF Available**
- **Free, Convenient On-site Parking**
- Positioned in a **well-maintained** and **secured** business park setting
- Suites with reception, offices and conference rooms are available
- **Google Fiber Available**
- **Clear visibility** and **instant accessibility** to I-35
- **Great location** central to the city's major thoroughfares; moments from the Plaza, Crown Center, Westport and Downtown

### LEASING CONTACT

**JEREMIAH DEAN, CCIM**

P (816) 701-5012

[jdean@copaken-brooks.com](mailto:jdean@copaken-brooks.com)

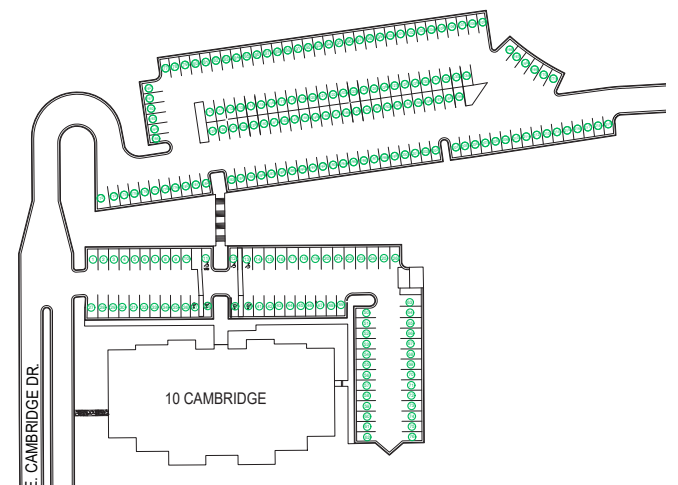
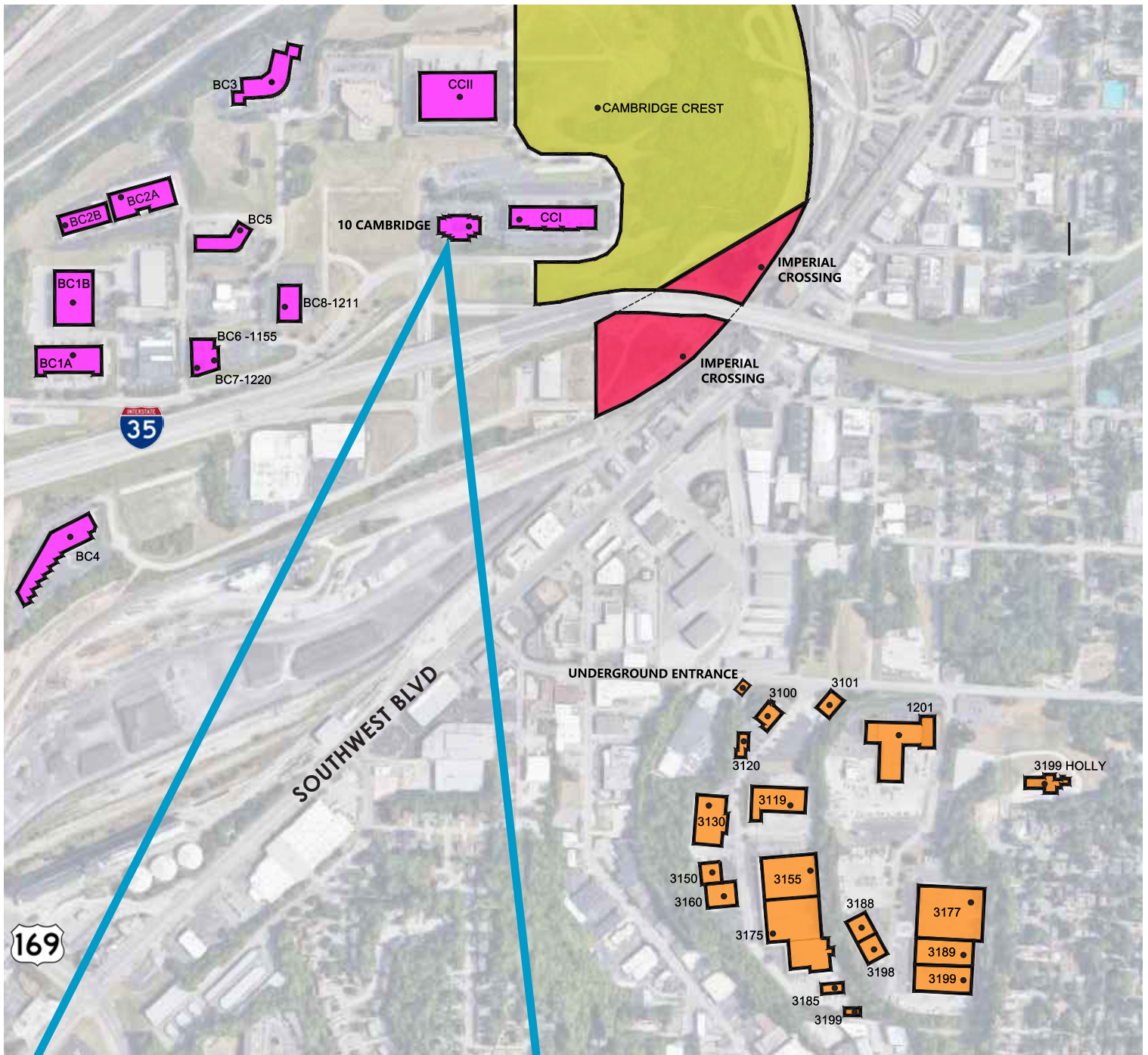
**MOLLY CRAWFORD MUNNINGHOFF**

P (816) 701-5013

[mcrawford@copaken-brooks.com](mailto:mcrawford@copaken-brooks.com)



# LOCATION



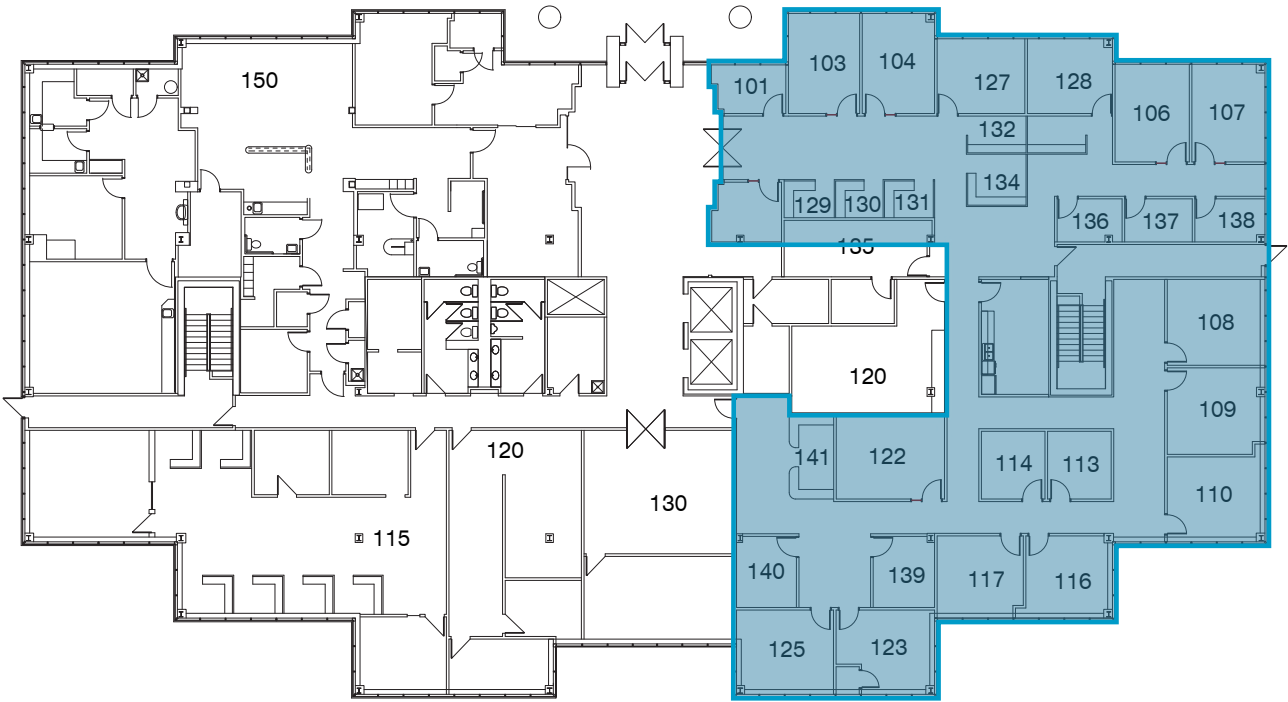
# FIRST FLOOR

**Total SF Available** 8,505 SF

**Parking** 4.00/1,000 SF

**Signage** Monument Signage

**Notes** Highway Visibility  
Google Fiber Available





# PREMIER OFFICE SPACE FOR LEASE



## LEASING CONTACT

**JEREMIAH DEAN, CCIM**

P (816) 701-5012

[jdean@copaken-brooks.com](mailto:jdean@copaken-brooks.com)

**MOLLY CRAWFORD MUNNINGHOFF**

P (816) 701-5013

[mcrawford@copaken-brooks.com](mailto:mcrawford@copaken-brooks.com)

All information furnished regarding property for sale or lease is from sources deemed reliable, but no warranty or representation is made as to the accuracy thereof and the same is subject to errors, omissions, changes of prices, rental or other conditions, prior sale or lease, or withdrawal without notice.