

## PREMIER OFFICE SPACE FOR LEASE



### OFFICE HIGHLIGHTS

- **1<sup>st</sup> Floor: 12,808 RSF - Ready for Build-Out**
- **2<sup>nd</sup> Floor: 1,935 RSF**
- **3<sup>rd</sup> Floor: 5,171 - 12,033 RSF**
- **6<sup>th</sup> Floor: 2,506 - 10,517 RSF**
- Distinctive signature architecture
- First class building lobby with two-story atrium allowing for natural light
- Close proximity to banks, restaurants and hotels
- Convenient access to I-435 via Metcalf or Nall interchanges
- After-hours access to the building via electronic card reader
- On-Site Property Management Office

### LEASING CONTACT

**MOLLY CRAWFORD MUNNINGHOFF**

P (816) 701-5013

[mcrawford@copaken-brooks.com](mailto:mcrawford@copaken-brooks.com)

**JOHN D. COE, SIOR, CCIM**

P (816) 701-5064

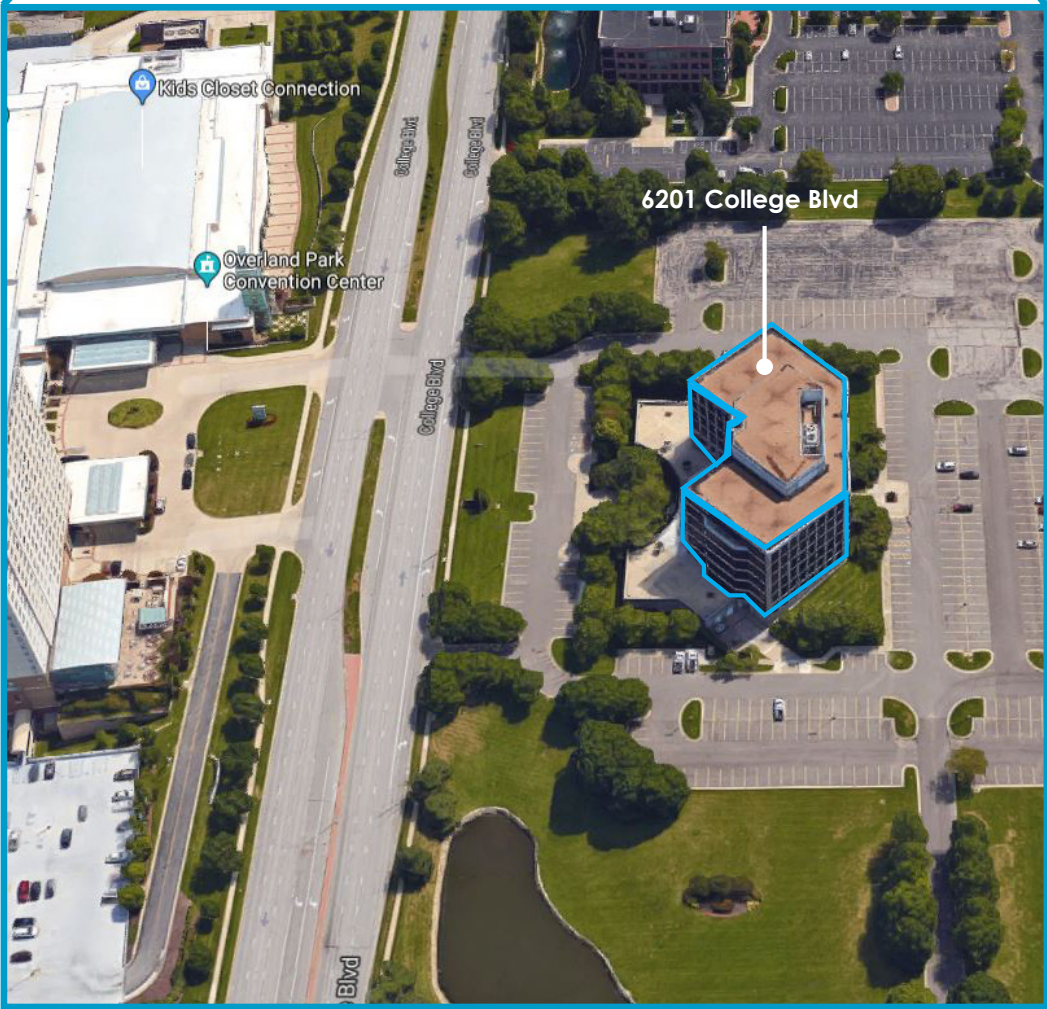
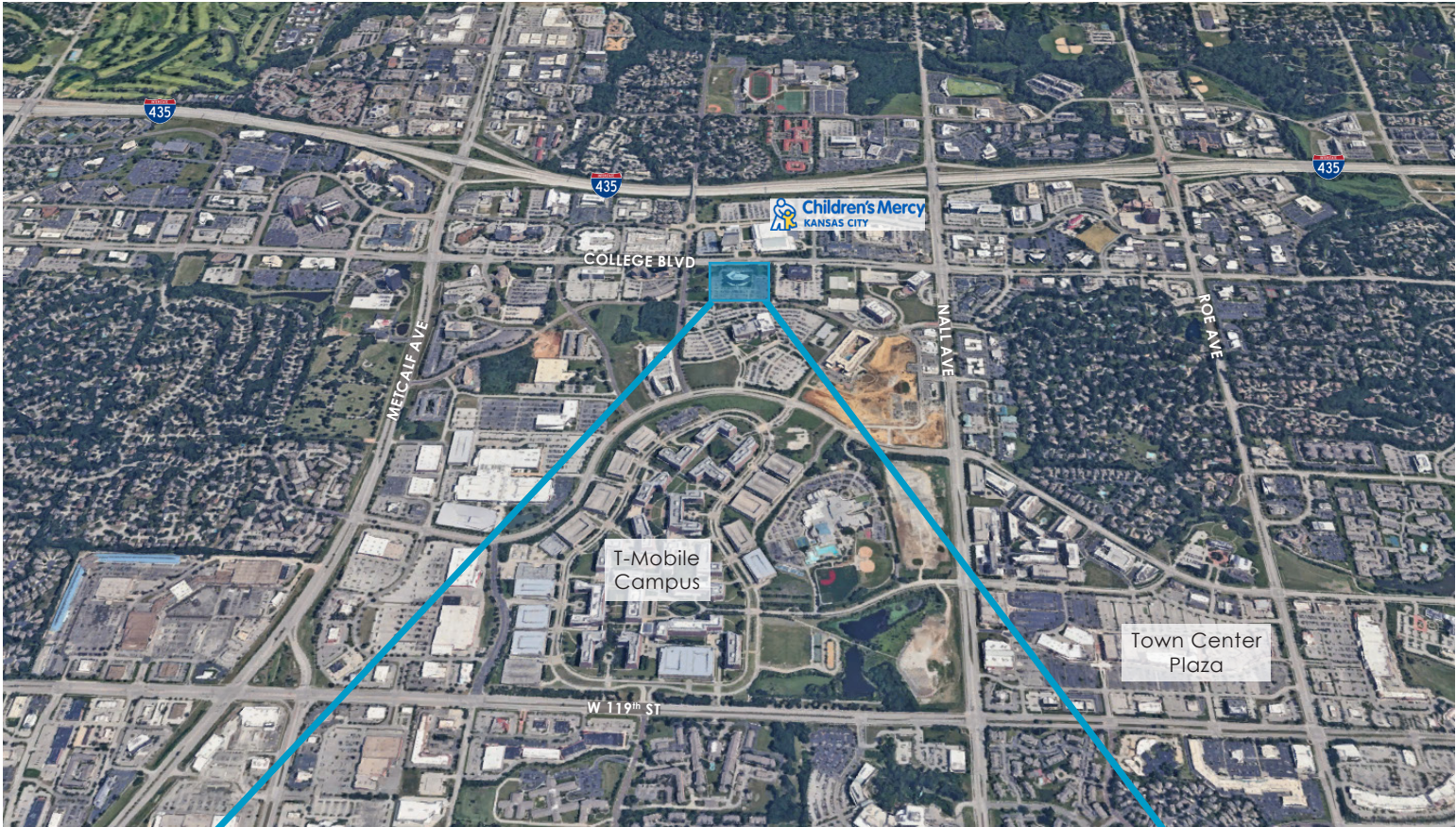
[jcoe@copaken-brooks.com](mailto:jcoe@copaken-brooks.com)

BUILDING SPECIFICATIONS

Address	6201 College Boulevard Overland Park, Kansas
Class	Class-A Office Building
Parking	552 free Surface Spaces are available; Ratio of 3.80/1,000 SF
Stories	7
Lobby	Two-Story Atrium
Elevator	3 elevator (1 freight elevator)
Telecommunications	Consolidated, AT&T
Hours of Operation	7:00 AM to 7:00 PM (Monday - Friday)
Security	Card Access System

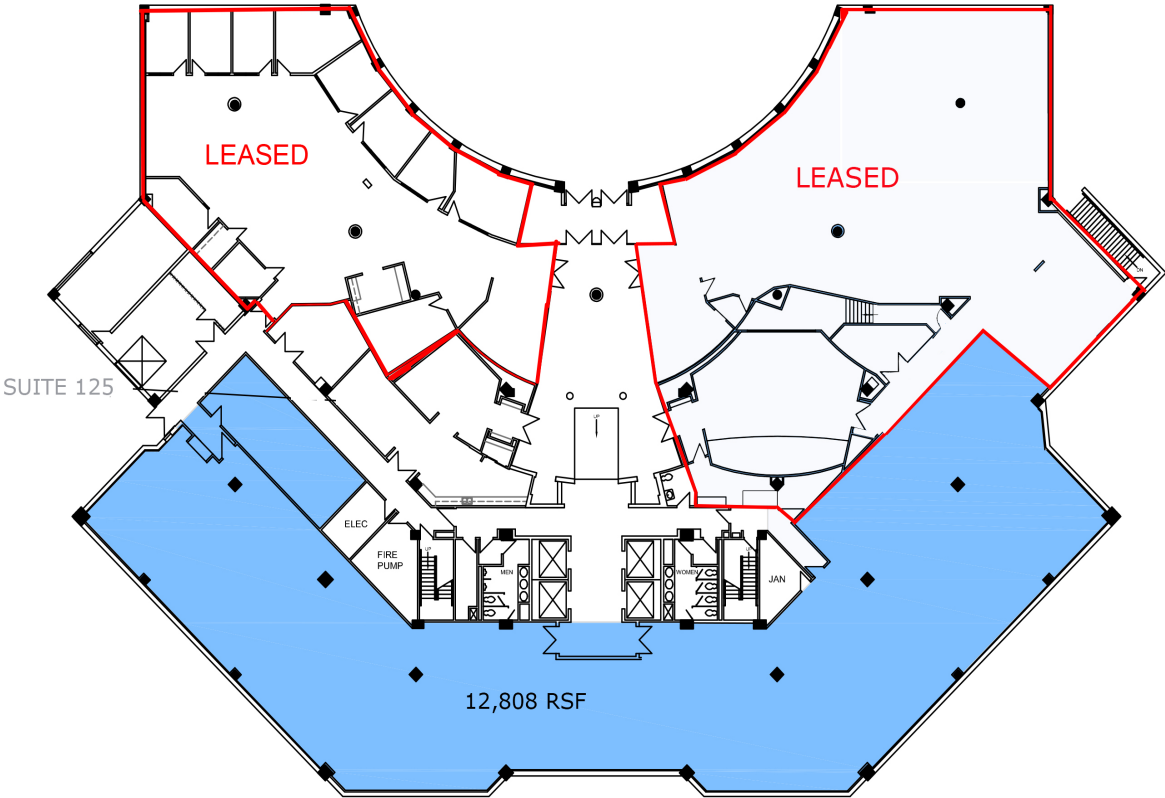




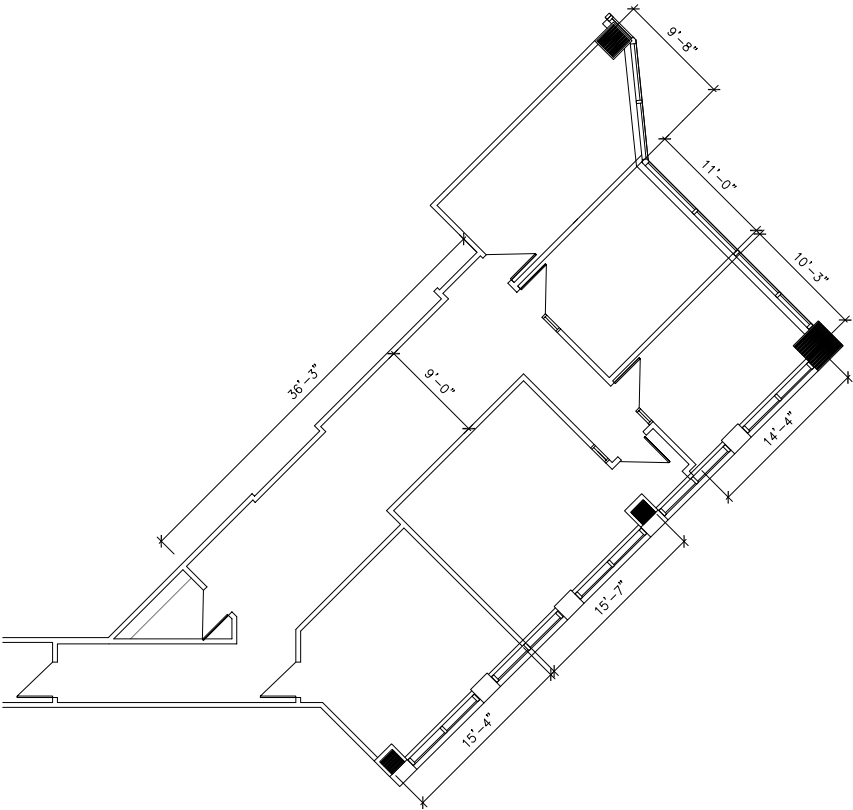


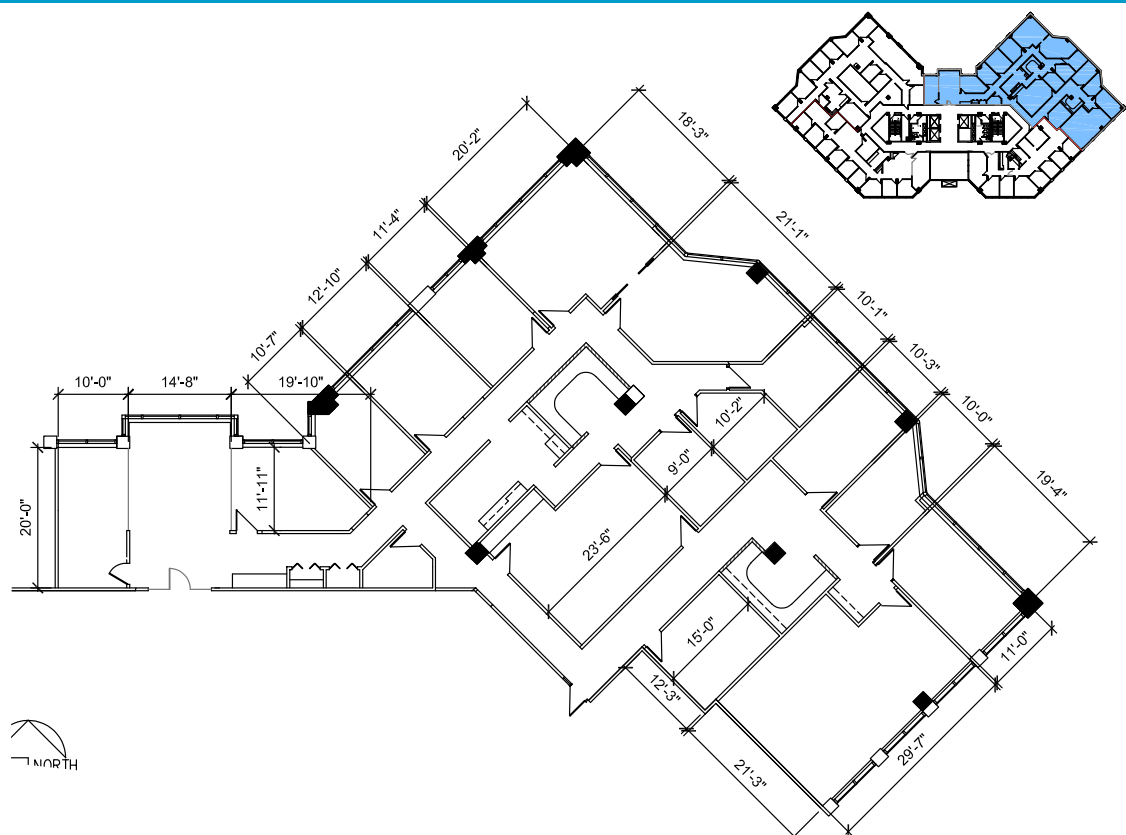


Suite125 - 12,808 SF

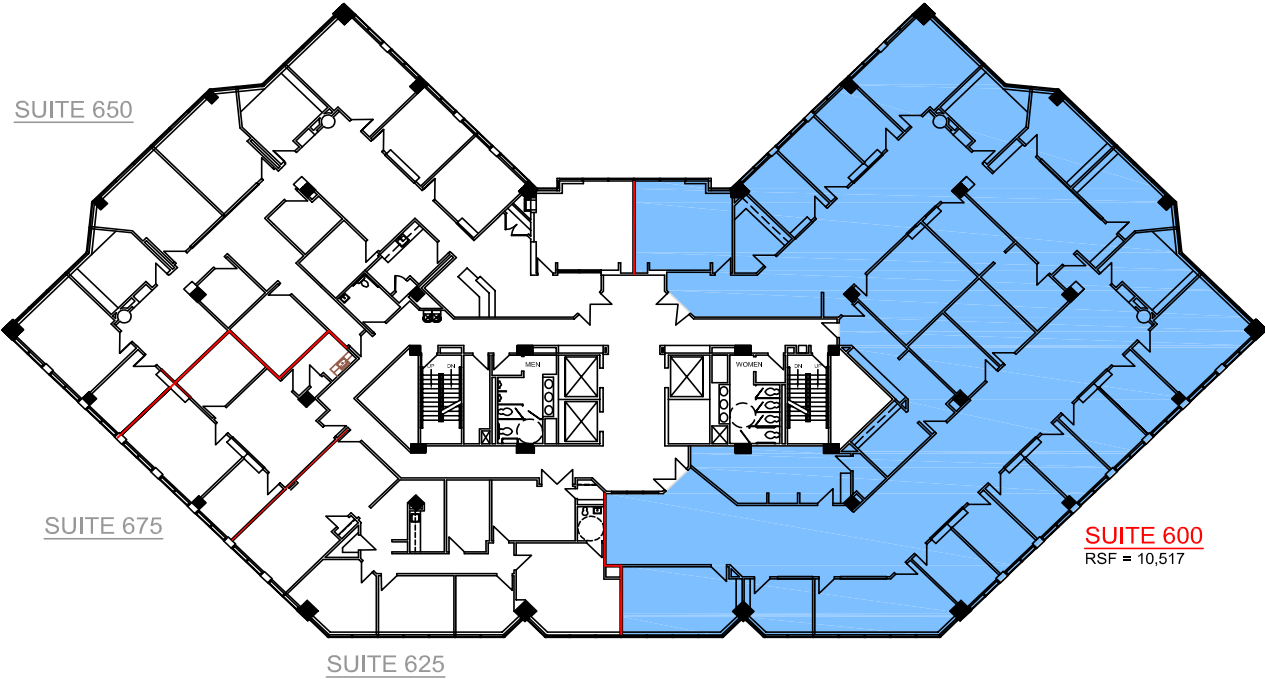


Suite 225 - 1,824 SF





Suite 600 - 10,517 RSF









# PREMIER OFFICE SPACE FOR LEASE



## LEASING CONTACT

**MOLLY CRAWFORD MUNNINGHOFF**

P (816) 701-5013

[mcrawford@copaken-brooks.com](mailto:mcrawford@copaken-brooks.com)

**JOHN D. COE, SIOR, CCIM**

P (816) 701-5064

[jcoe@copaken-brooks.com](mailto:jcoe@copaken-brooks.com)

All information furnished regarding property for sale or lease is from sources deemed reliable, but no warranty or representation is made as to the accuracy thereof and the same is subject to errors, omissions, changes of prices, rental or other conditions, prior sale or lease, or withdrawal without notice.