

## PREMIER OFFICE AND INDUSTRIAL SPACE FOR LEASE



### SPACE HIGHLIGHTS

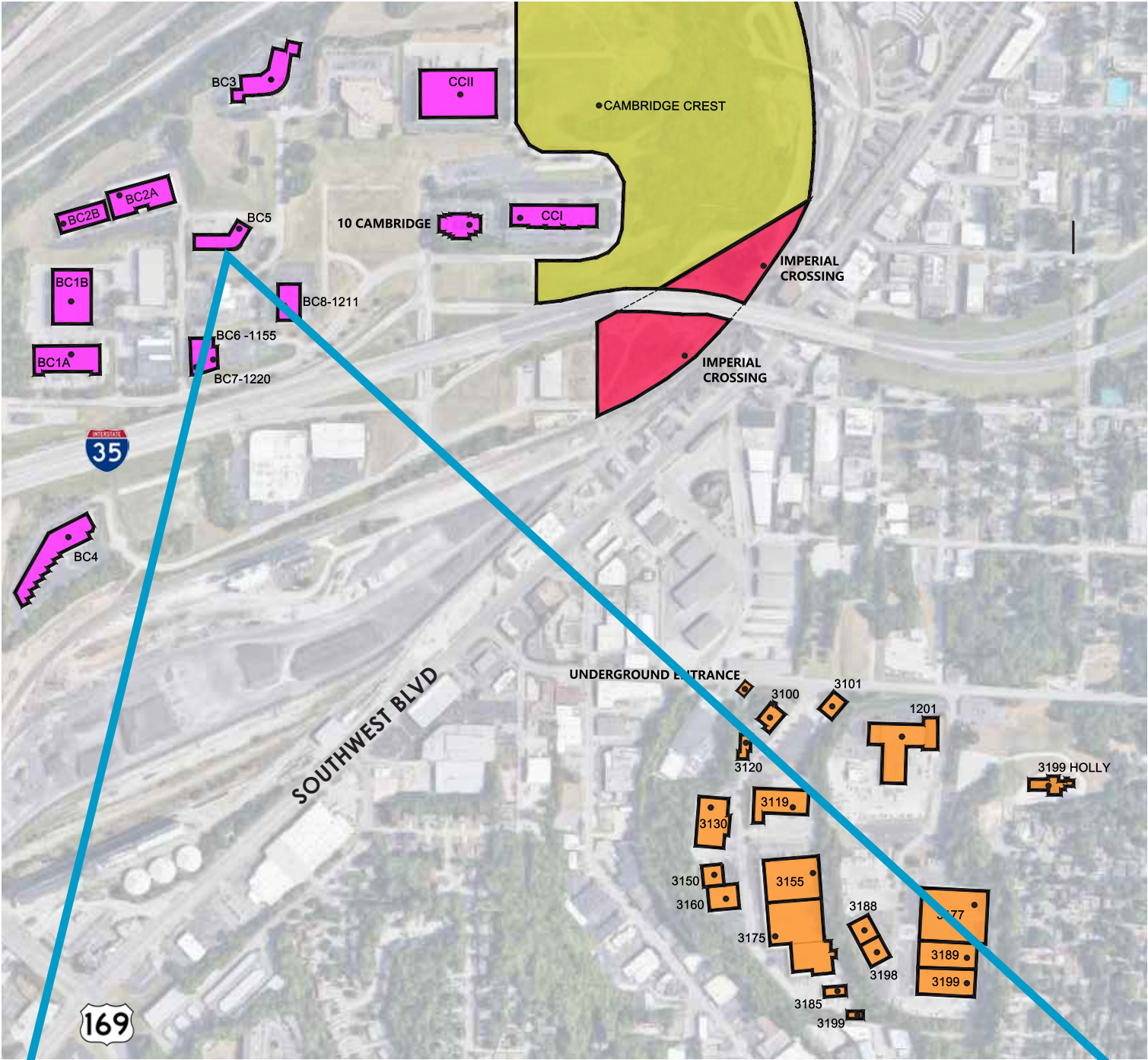
- **1,814 - 2,750 SF Available**
- **Free, Convenient On-Site Parking**
- Positioned in a **well-maintained** and **secured** business park setting
- Accommodates large and small businesses
- Appropriate for light manufacturing, showroom and warehouse/flex applications
- **Clear visibility** and **instant accessibility** to I-35
- **Great location** central to the city's major thoroughfares; moments from the Plaza, Crown Center, Westport and Downtown

### LEASING CONTACT

**JEREMIAH DEAN, CCIM**  
P (816) 701-5012  
[jdean@copaken-brooks.com](mailto:jdean@copaken-brooks.com)



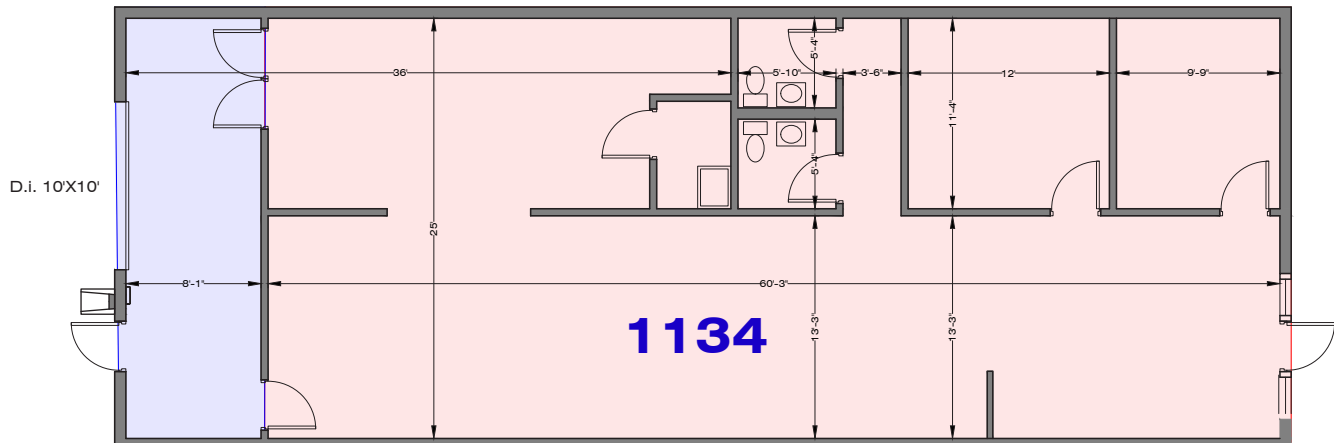
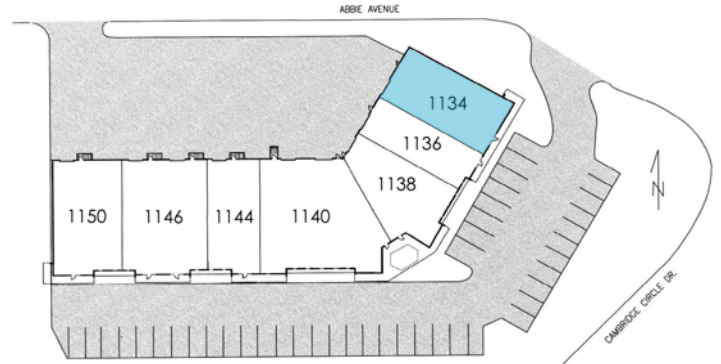
LOCATION



# 1134 W CAMBRIDGE CIR DR

## BUSINESS CENTER 5

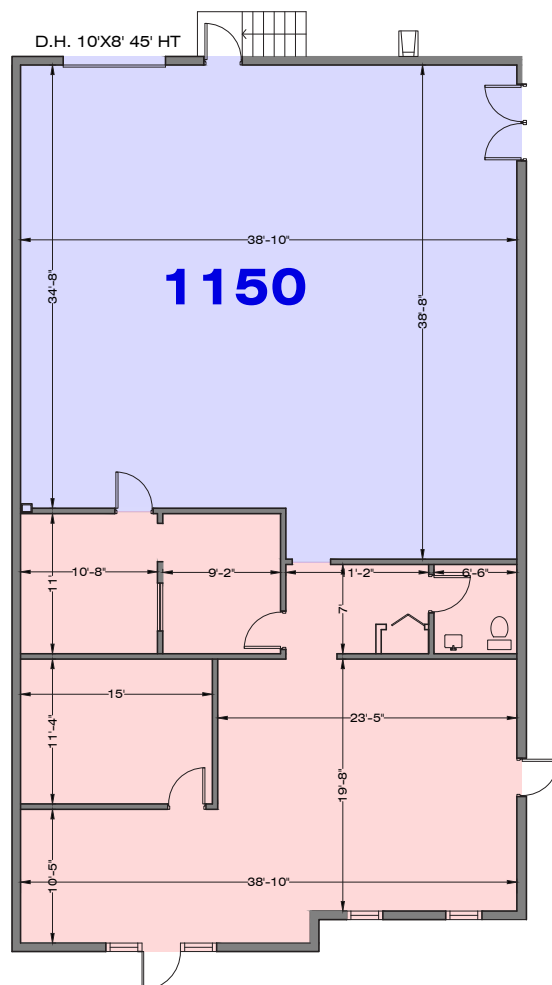
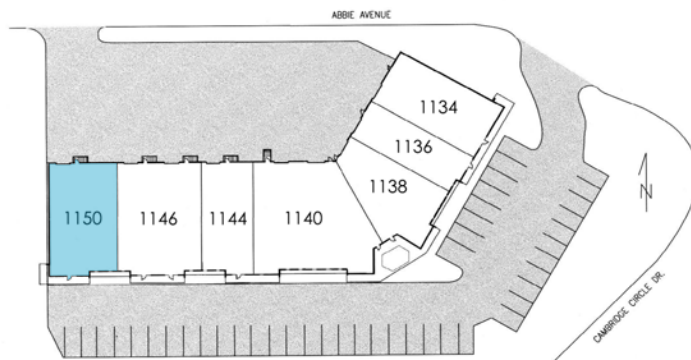
<b>Total SF Available</b>	<b>1,814 SF</b>
<b>Office SF</b>	1,583 SF
<b>Warehouse SF</b>	231 SF
<b>Drive-In Doors</b>	1 (10' x 10')
<b>Clear Height</b>	16'



# 1150 W CAMBRIDGE CIR DR

## BUSINESS CENTER 5

<b>Total SF Available</b>	<b>2,750 SF</b>
<b>Office SF</b>	1,258 SF
<b>Warehouse SF</b>	1,492 SF
<b>Dock High Doors</b>	1 (10' x 8')
<b>Clear Height</b>	16'









# PREMIER OFFICE AND INDUSTRIAL SPACE FOR LEASE



## LEASING CONTACT

**JEREMIAH DEAN, CCIM**  
P (816) 701-5012  
[jdean@copaken-brooks.com](mailto:jdean@copaken-brooks.com)

All information furnished regarding property for sale or lease is from sources deemed reliable, but no warranty or representation is made as to the accuracy thereof and the same is subject to errors, omissions, changes of prices, rental or other conditions, prior sale or lease, or withdrawal without notice.