

## PREMIER OFFICE AND INDUSTRIAL SPACE FOR LEASE



### SPACE HIGHLIGHTS

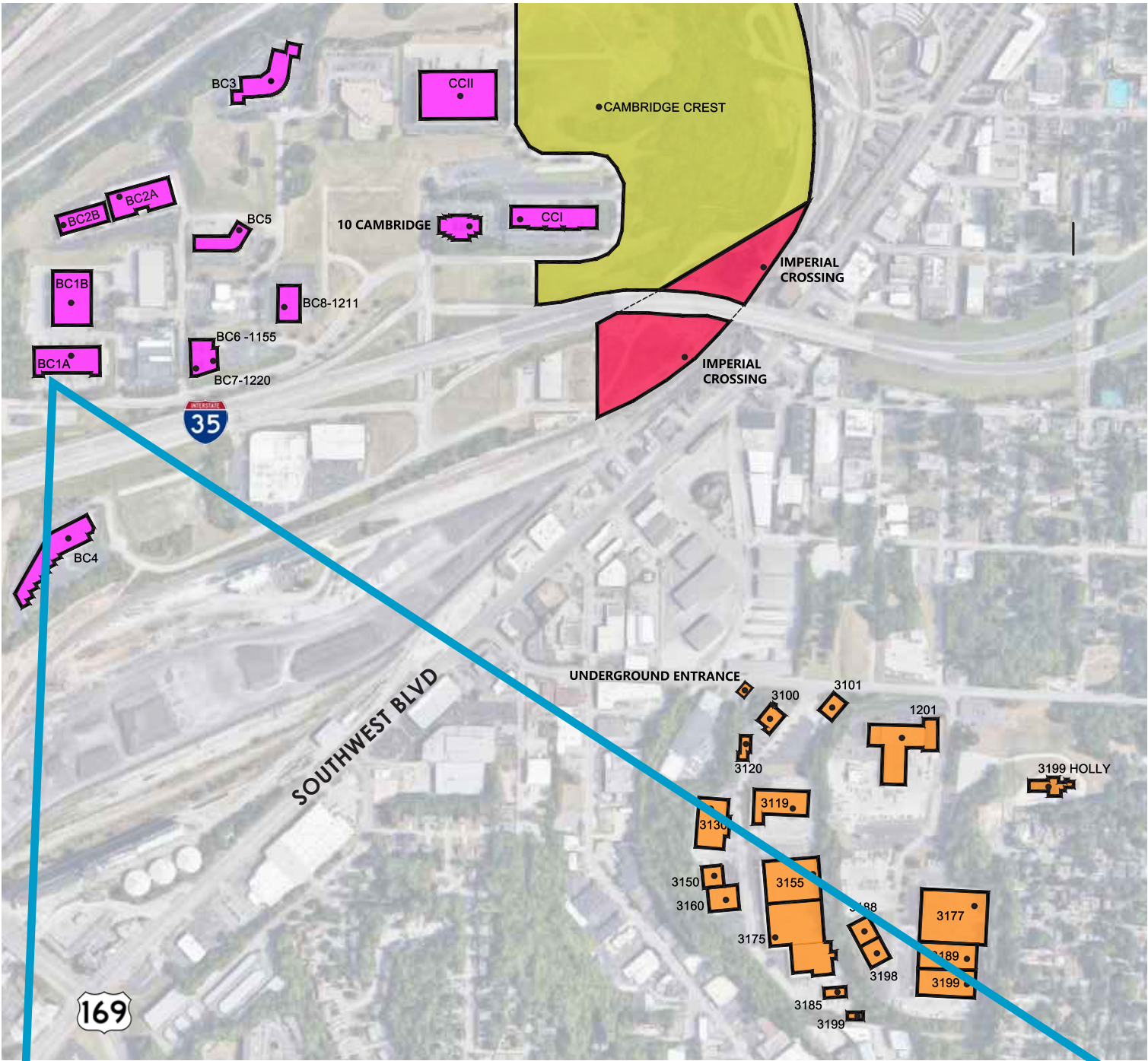
- **4,216 - 27,853 SF Available**  
(Divisible or Contiguous)
- **Free, Convenient On-Site Parking**
- Positioned in a **well-maintained** and **secured** business park setting
- Accommodates large and small businesses
- Appropriate for light manufacturing, showroom and warehouse/flex applications
- **Google Fiber Available**
- **Clear visibility** and **instant accessibility** to I-35
- **Great location** central to the city's major thoroughfares; moments from the Plaza, Crown Center, Westport and Downtown

### LEASING CONTACT

**JEREMIAH DEAN, CCIM**  
P (816) 701-5012  
[jdean@copaken-brooks.com](mailto:jdean@copaken-brooks.com)



LOCATION

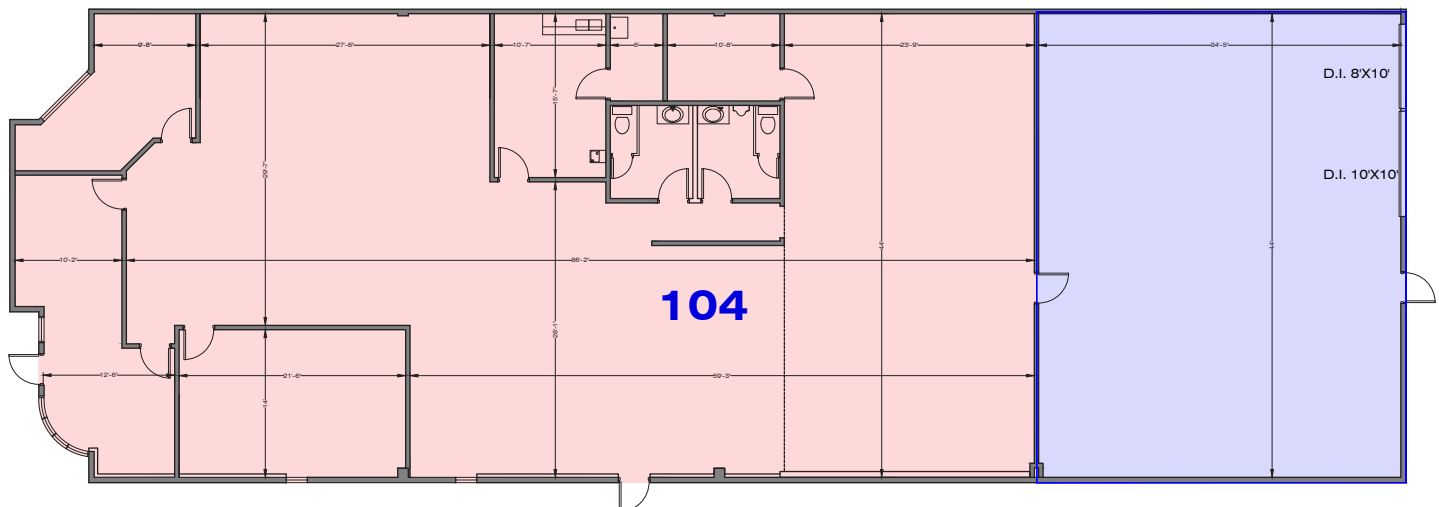


GREYSTONE AVENUE

116  
114  
112  
110  
106-108  
104

1146  
1144  
1142  
1140

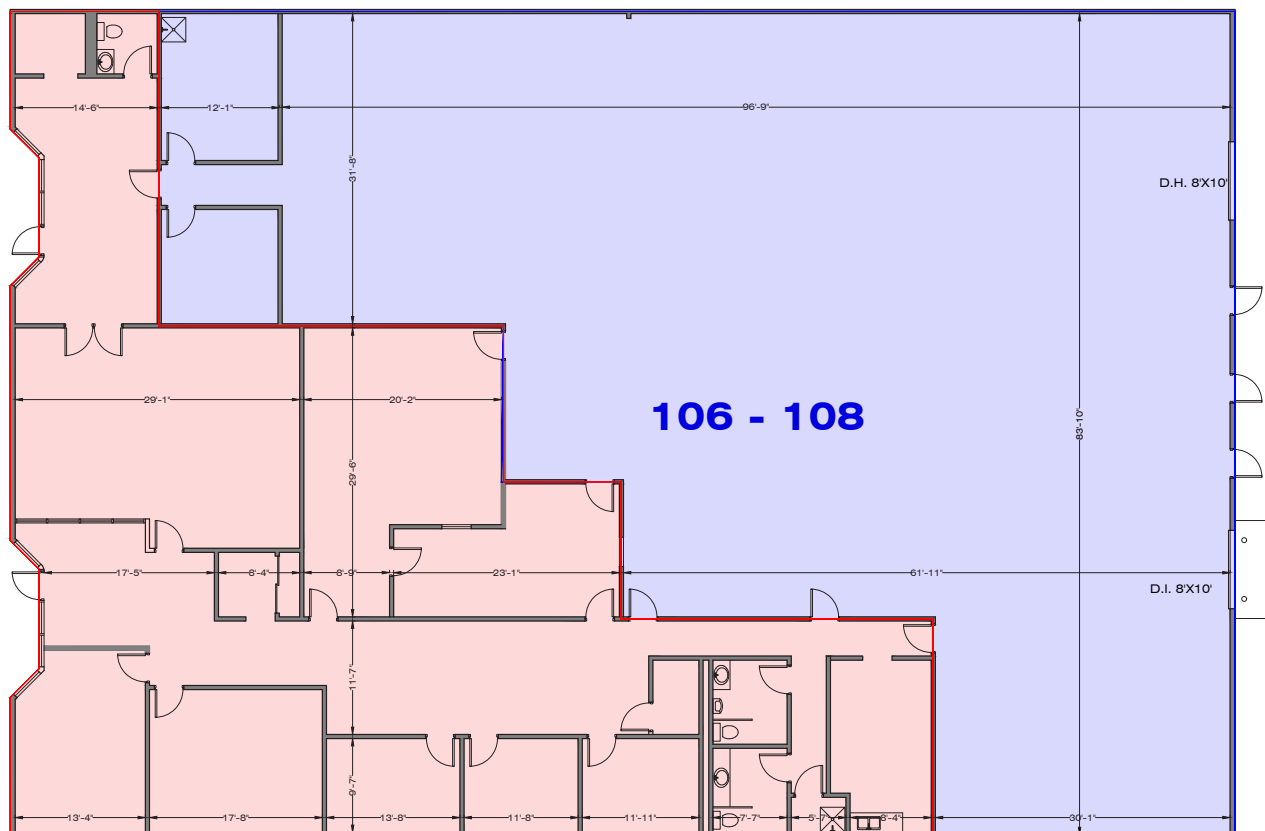
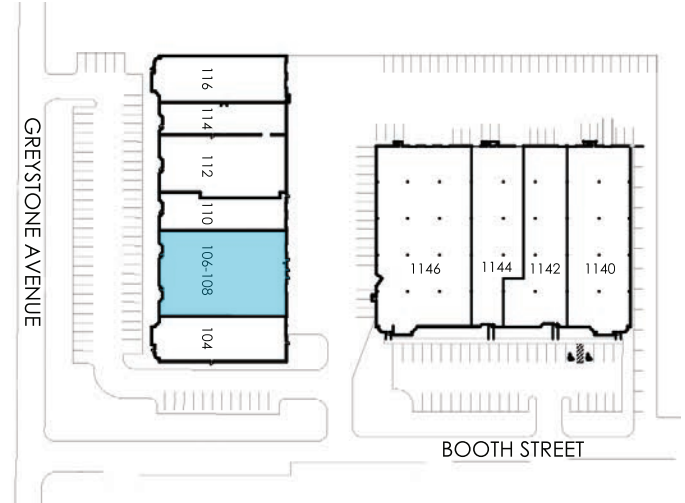
BOOTH STREET



# 106 - 108 GREYSTONE

## BUSINESS CENTER 1A

<b>Total SF Available</b>	<b>10,423 SF</b>
<b>Office SF</b>	4,154 SF
<b>Warehouse SF</b>	6,269 SF
<b>Dock High Doors</b>	1 (8' x 10')
<b>Drive-In Doors</b>	1 (8' x 10') - Ramped
<b>Clear Height</b>	16'
<b>Notes</b>	Highway Visibility Google Fiber Available



# 110 GREYSTONE

## BUSINESS CENTER 1A

**Total SF Available** **4,216 SF**

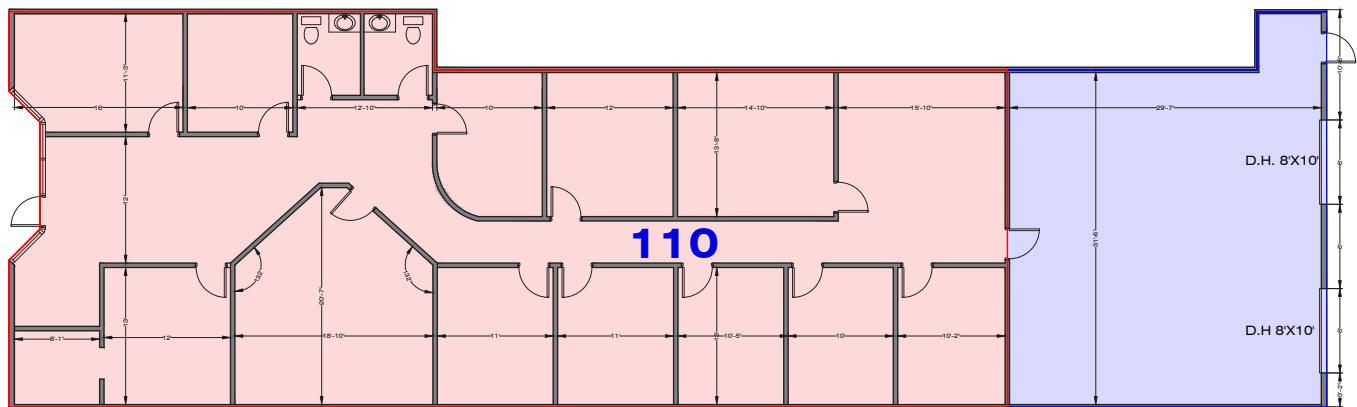
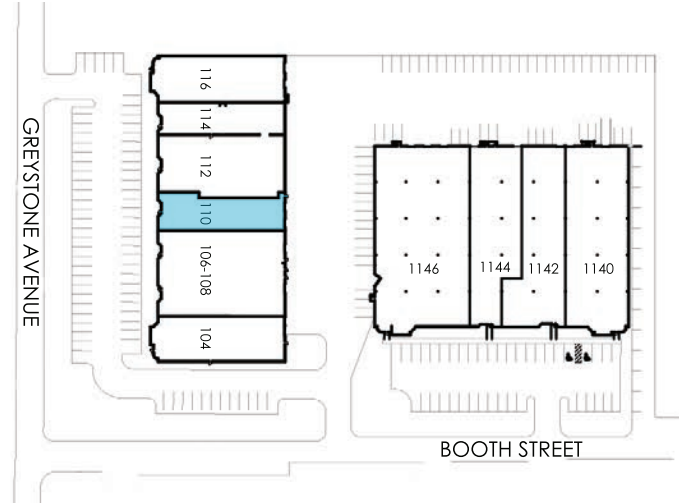
**Office SF** 3,212 SF

**Warehouse SF** 1,004 SF

**Dock High Doors** 2 (8' x 10')

**Clear Height** 16'

**Notes** Highway Visibility  
Google Fiber Available

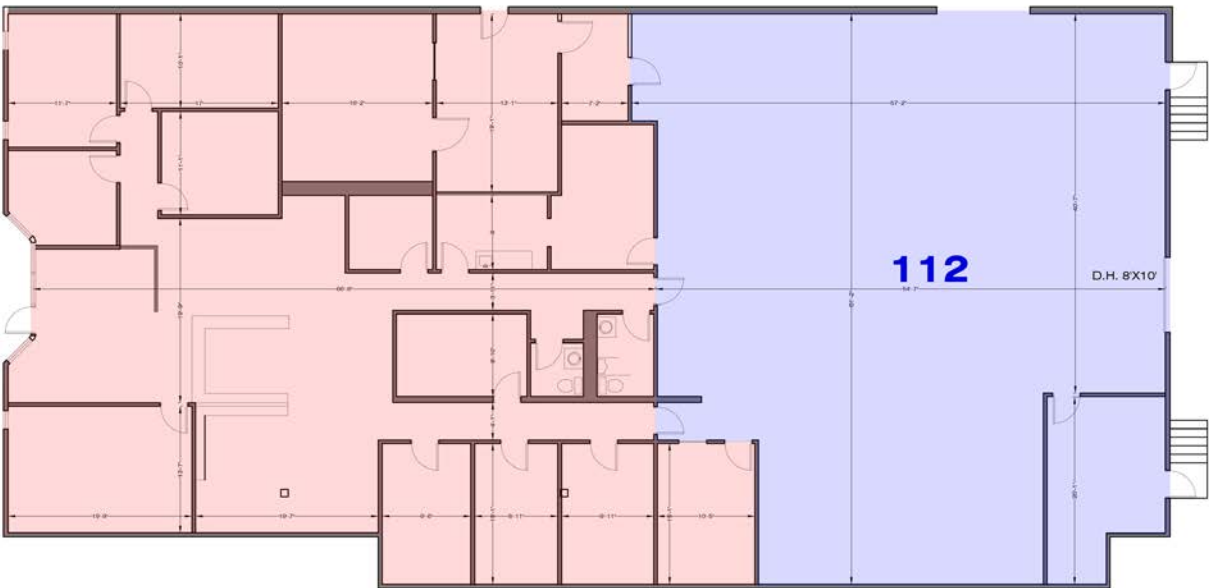
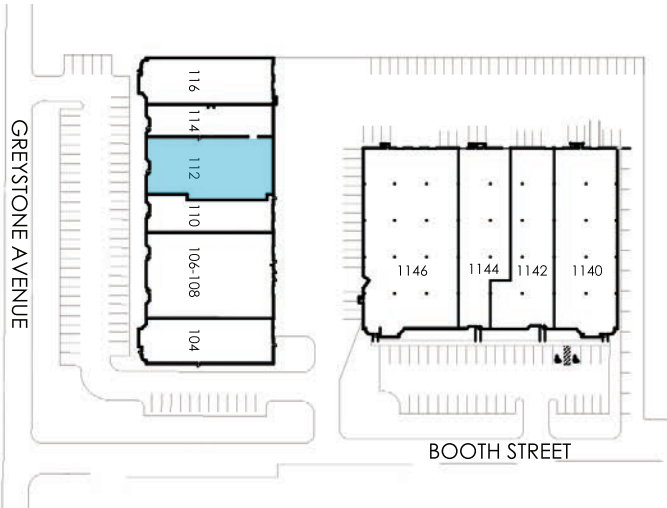




# 112 GREYSTONE

## BUSINESS CENTER 1A

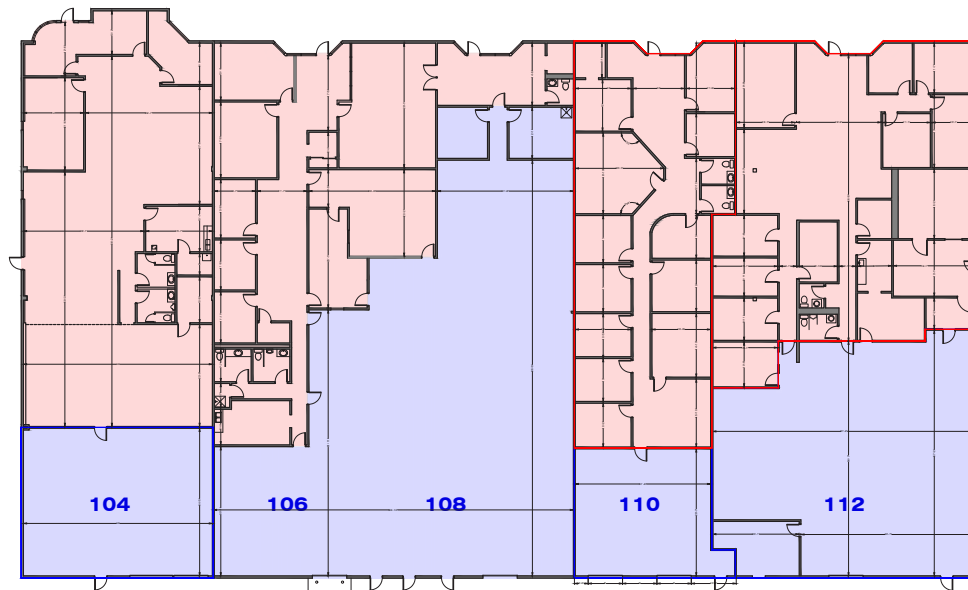
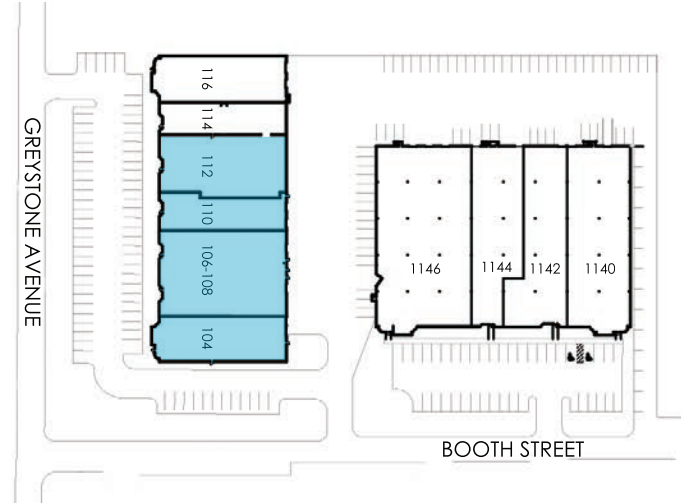
Total SF Available	7,419 SF
Office SF	4,187 SF
Warehouse SF	3,232 SF
Dock High Doors	1 (8' x 10')
Clear Height	16'
Notes	Highway Visibility Google Fiber Available



# 104-112 GREYSTONE

## BUSINESS CENTER 1A

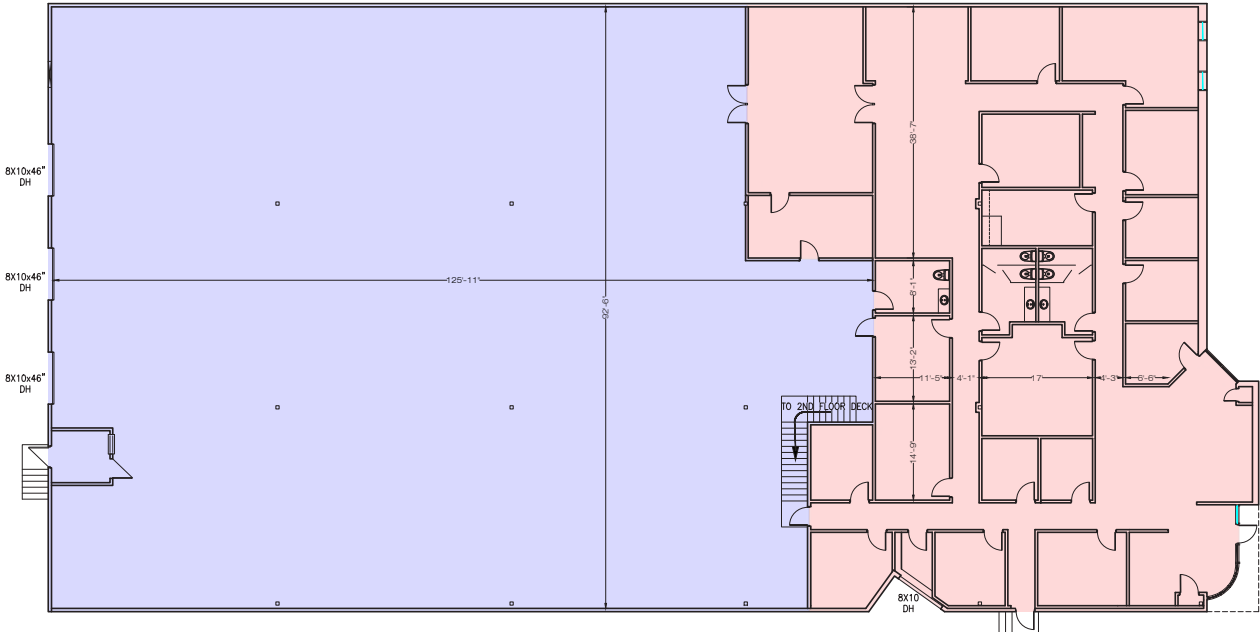
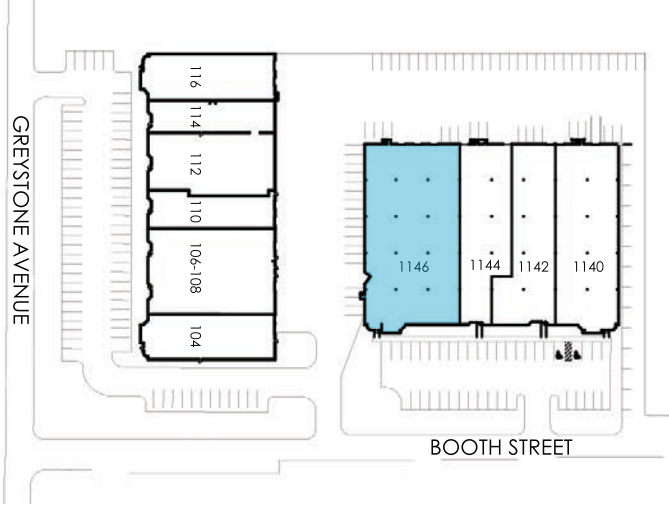
<b>Total SF Available</b>	<b>27,853 SF</b>
<b>Office SF</b>	18,838 SF
<b>Warehouse SF</b>	9,015 SF
<b>Dock High Doors</b>	5 (8' x 10') 1 (10' x 10')
<b>Drive-In Doors</b>	1 (8' x 10') - Ramped
<b>Clear Height</b>	16'
<b>Notes</b>	Highway Visibility Google Fiber Available



# 1146 BOOTH

## BUSINESS CENTER 1B

Total SF Available	16,931 SF
Office SF	5,874 SF
Warehouse SF	11,057 SF
Dock High Doors	3 (8' x 10')
Clear Height	16'
Notes	Highway Visibility Google Fiber Available





# PREMIER OFFICE AND INDUSTRIAL SPACE FOR LEASE



## LEASING CONTACT

**JEREMIAH DEAN, CCIM**  
P (816) 701-5012  
[jdean@copaken-brooks.com](mailto:jdean@copaken-brooks.com)

All information furnished regarding property for sale or lease is from sources deemed reliable, but no warranty or representation is made as to the accuracy thereof and the same is subject to errors, omissions, changes of prices, rental or other conditions, prior sale or lease, or withdrawal without notice.