

## OFFICE SPACE FOR LEASE IN BRIARCLIFF



### SPACE HIGHLIGHTS

- **2,636 - 9,217 SF Available**
- Moving to Briarcliff is an investment which provides long lasting value to discerning space users
- Located within 8 minutes of Downtown, the River Market, Crossroads and more!
- Just 13 minutes from Johnson County
- Restaurants, shopping, and banking within walking distance to The Village at Briarcliff
- On site nature trails provide outdoor exercise amenities along the river
- Stunning views of the Downtown Skyline

### LEASING CONTACTS

**JOHN D. COE**, SIOR, CCIM

P (816) 701-5064

[jcoe@copaken-brooks.com](mailto:jcoe@copaken-brooks.com)

**MOLLY CRAWFORD MUNNINGHOFF**

P (816) 701-5013

[mcrawford@copaken-brooks.com](mailto:mcrawford@copaken-brooks.com)

# Briarcliff

Stunning views, countless amenities and first class offices are just some of the reasons Briarcliff is the ultimate place for your business. Briarcliff has easy access to all Metro highways, making you easily accessible to the entire Metro area. The Village at Briarcliff provides incredible restaurants, shopping and more within walking distance. If that's not enough, Downtown, the River Market and Crossroads are just an 8 minute drive. Briarcliff perfectly combines live, work and play to make the ideal place for your business.

## Briarcliff Amenities

### Restaurants

- Briarcliff Barrio Mexican Kitchen
- Greenacres Deli
- Headrush Roasters
- Piropos
- Phillytime
- Trezo mare

### Shopping

- Budget Blinds
- California Closests
- Decori
- Design in the City
- The Foot Spo
- Made in KC
- Nell Hill's

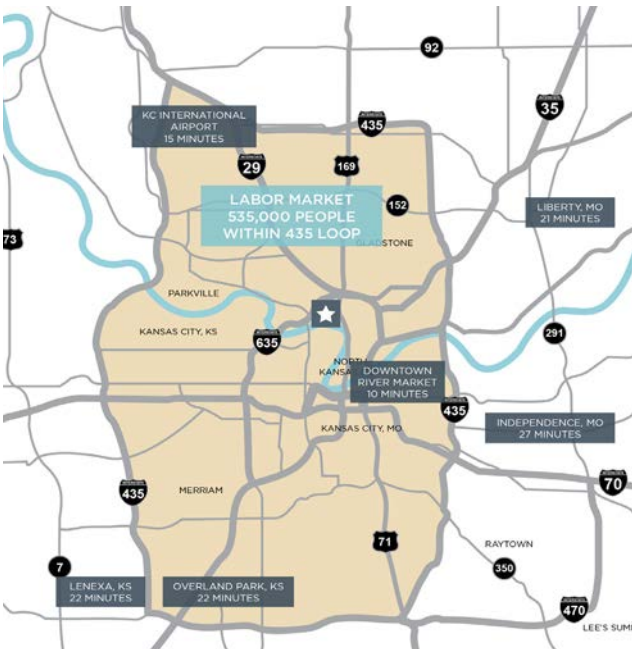
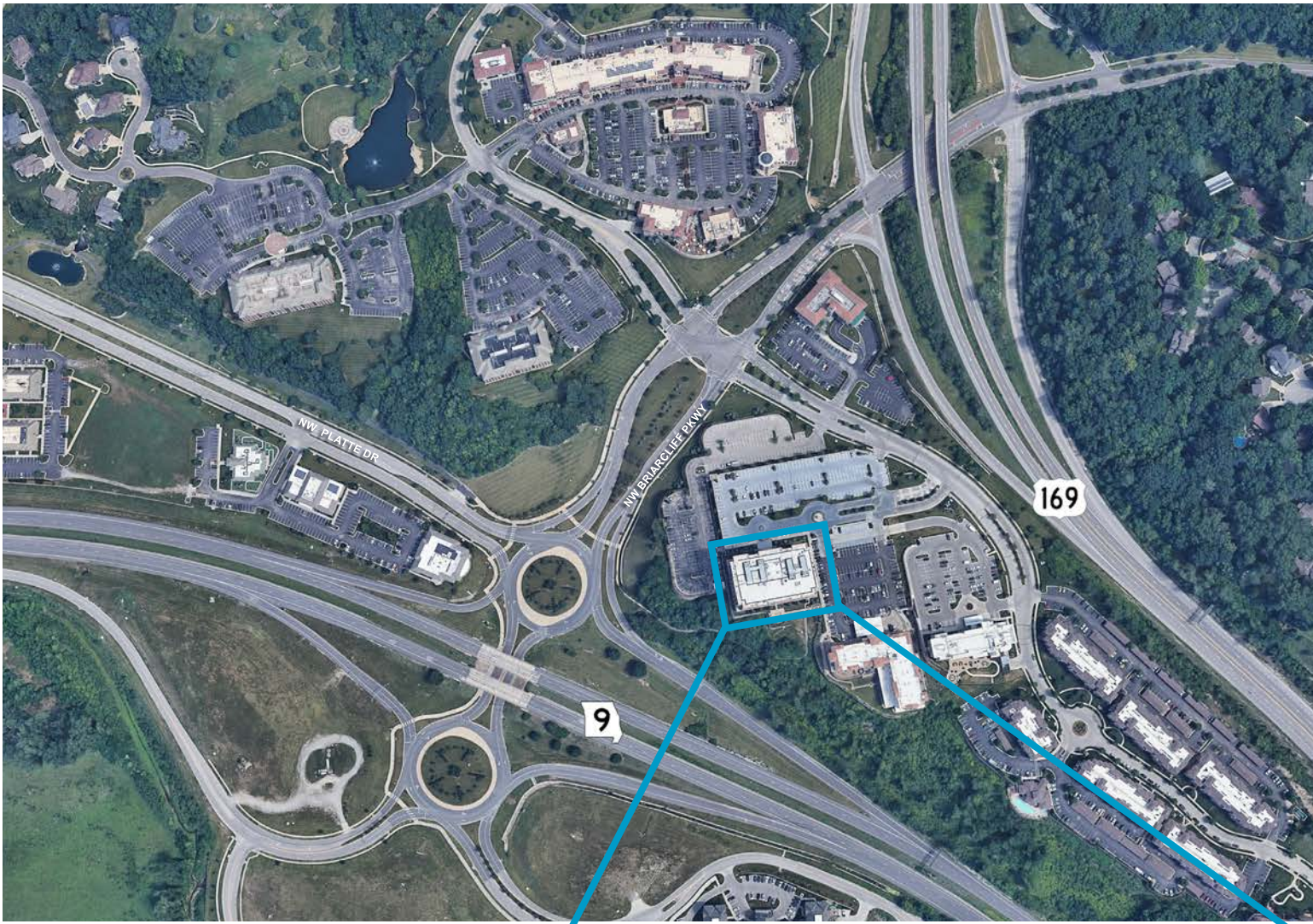
### Services

- Buenos Aires Room and Wedding Chapel
- Eclectica
- Edward Jones
- GreenAcres Market
- Invisalign
- L'acqua Nails & Lashes
- Metro KC Fitness
- Pinot's Palette
- Rajeunir Medical Spa
- Royal Room at Briarcliff
- The Spa at Briarcliff
- Top Cleaners/Tailor
- Westrock Orthodontics

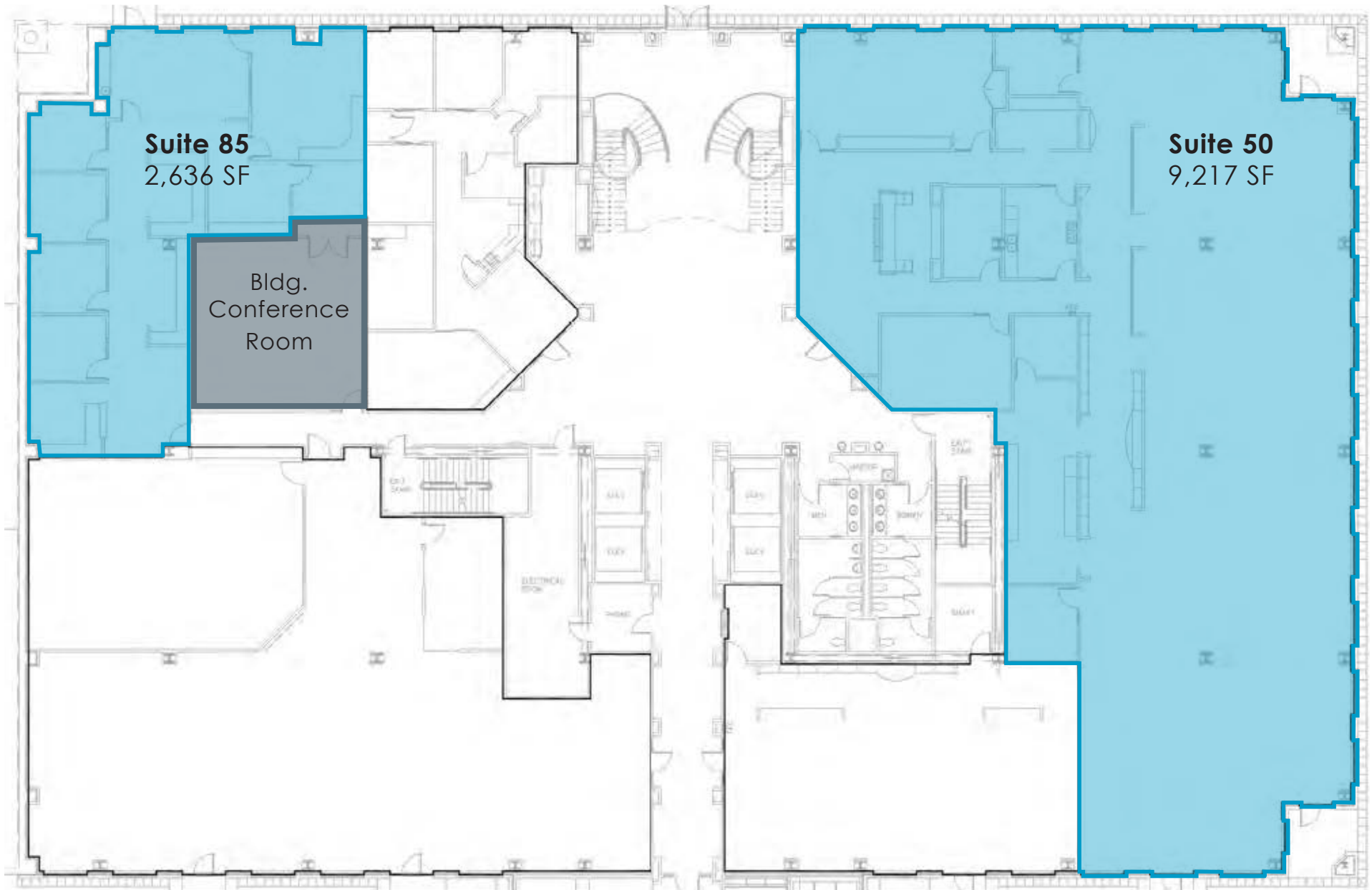
## Briarcliff Hilltop Amenities

- On site property management
- Covered Parking
- Large Conference Room
- Outdoor Patio
- On site nature trails
- Gorgeous skyline views
- Courtyard Marriott Provides: Large Conference Center, Outdoor Entertainment Lounge and Cafe



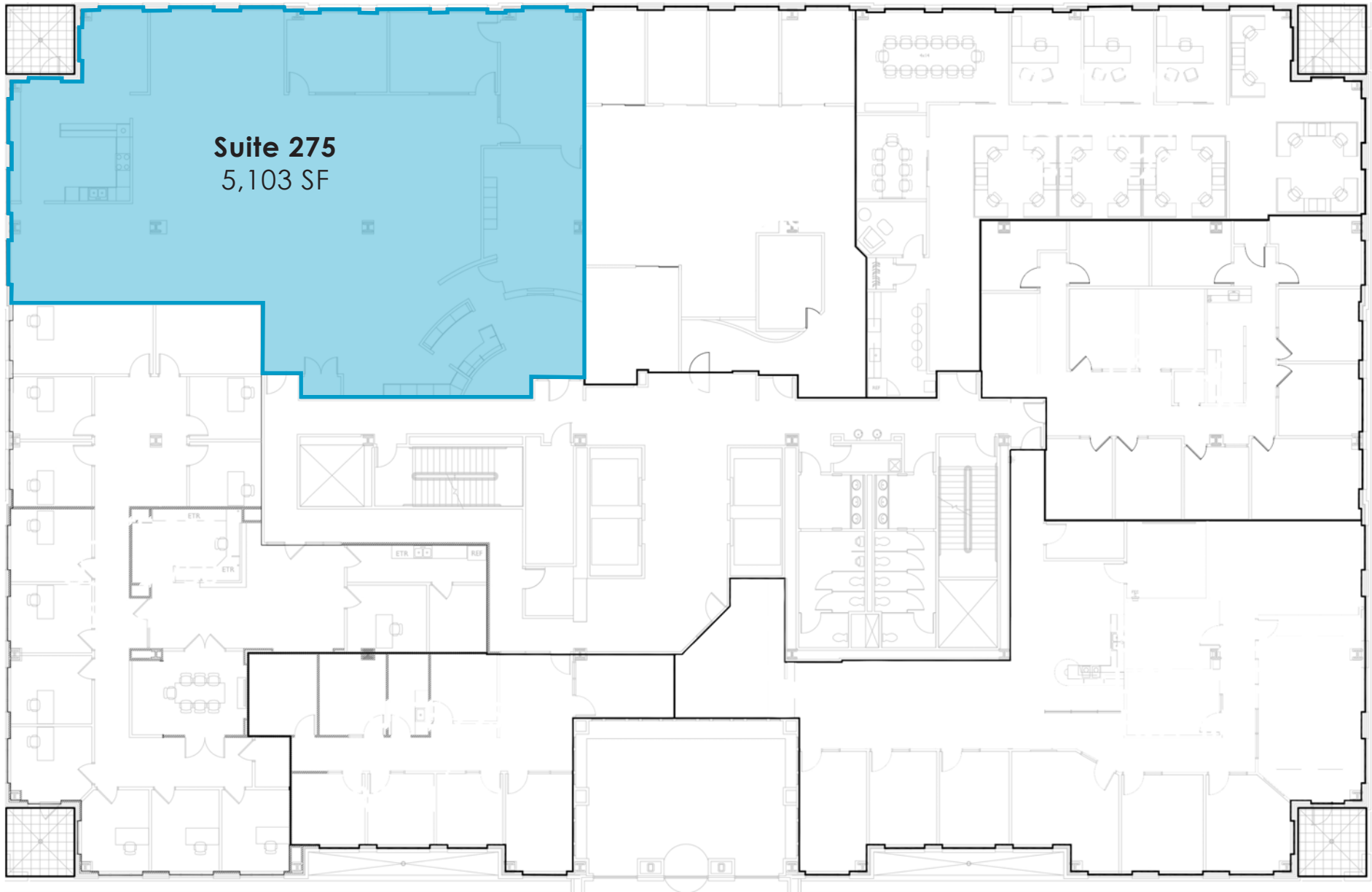


# Garden Level



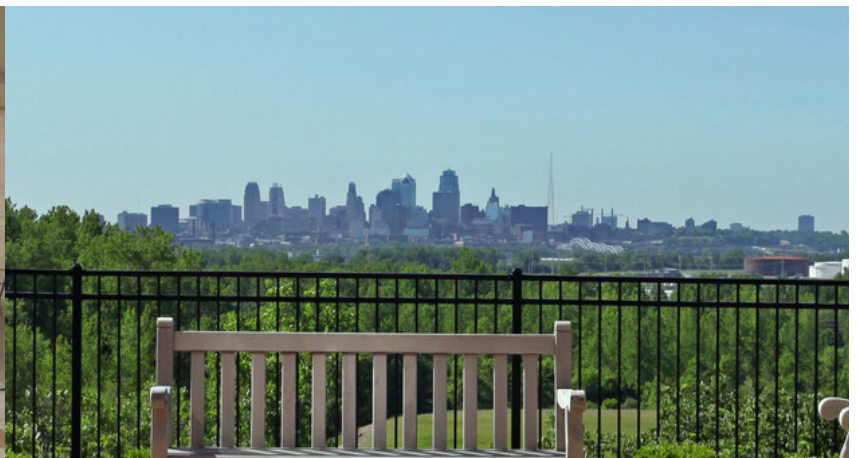
 = Suite Available

# Second Level



 = Suite Available

# OFFICE SPACE FOR LEASE IN BRIARCLIFF



## LEASING CONTACTS

**JOHN D. COE, SIOR, CCIM**  
P (816) 701-5064  
jcoe@copaken-brooks.com

**MOLLY CRAWFORD MUNNINGHOFF**  
P (816) 701-5013  
mcrawford@copaken-brooks.com

All information furnished regarding property for sale or lease is from sources deemed reliable, but no warranty or representation is made as to the accuracy thereof and the same is subject to errors, omissions, changes of prices, rental or other conditions, prior sale or lease, or withdrawal without notice.