

## PARK PLACE 95 - FLEX SPACE AVAILABLE



### OFFICE SPACE HIGHLIGHTS

- **1,760 - 11,700 SF Available**
- High quality office, flex and industrial space with an unbeatable Johnson County Location.
- Competitive lease rates and a high-image business park environment.
- Less than 1.5 Miles from I-435 and I-35 Access, 3 Miles to K-10 with direct access to Lawrence, and 6 Miles to 69 Hwy providing access into South Overland Park

### LEASING CONTACTS

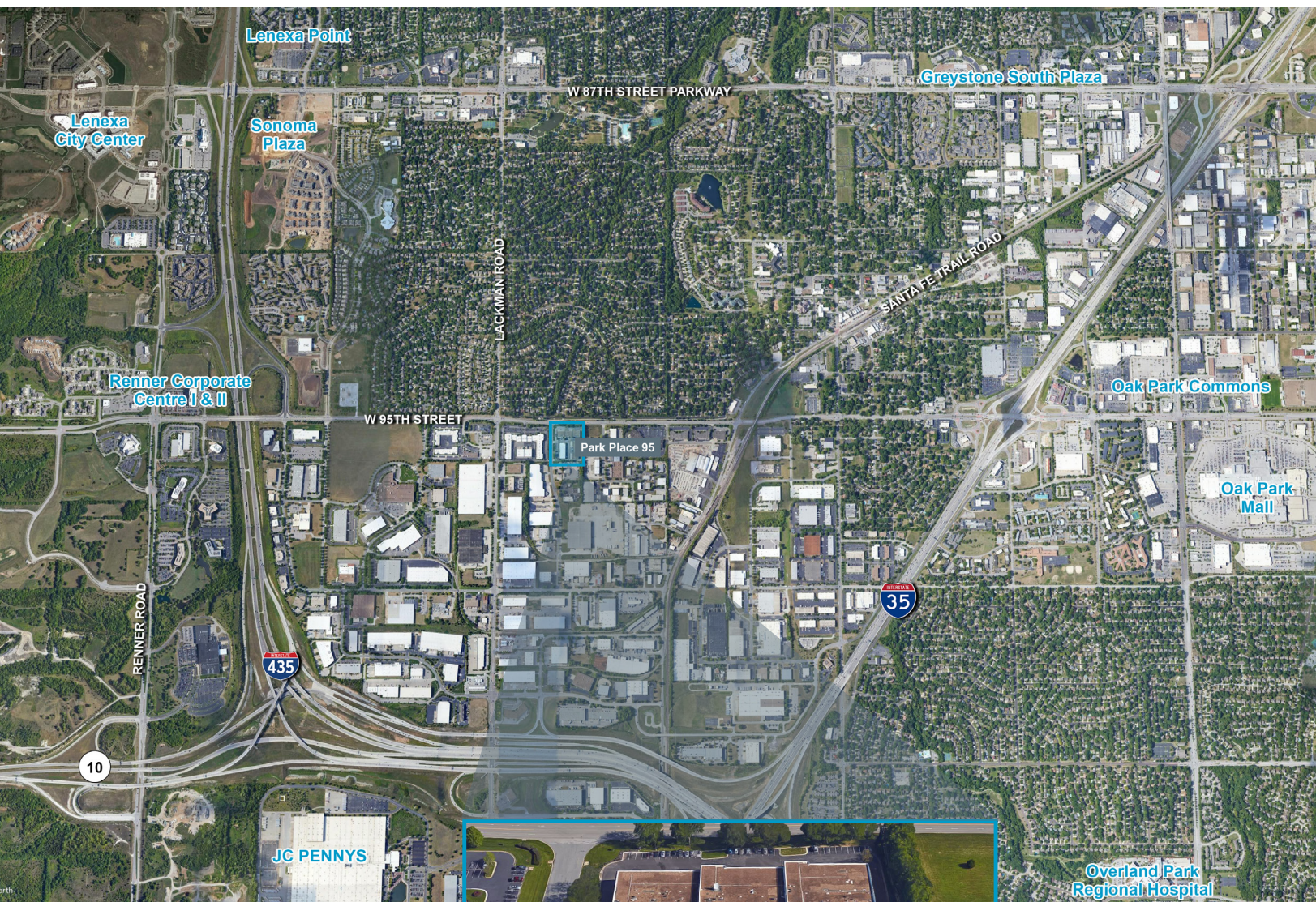
**MOLLY CRAWFORD MUNNINGHOFF**

P (816) 701-5013

[mcrawford@copaken-brooks.com](mailto:mcrawford@copaken-brooks.com)



## LENEXA, KANSAS



### DEMOGRAPHIC HIGHLIGHTS

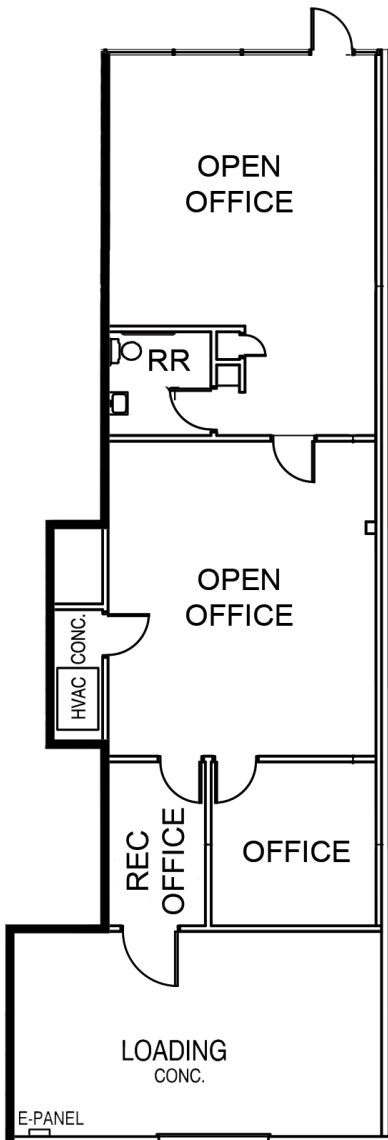
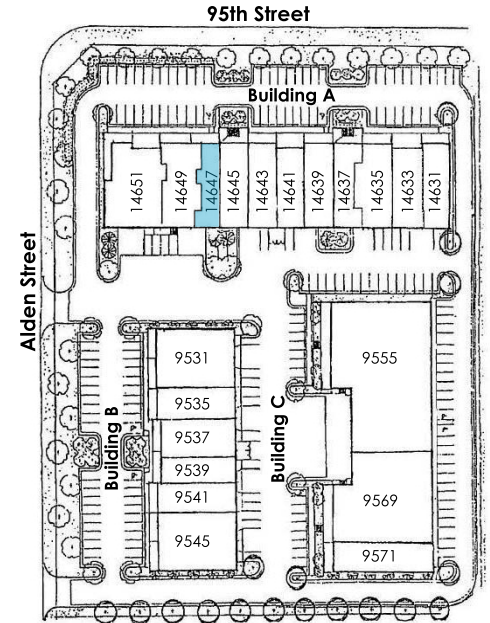
	1 mile	3 miles	5 miles
<b>Population</b>	6,687	65,899	204,762
<b>Households</b>	2,958	28,169	85,887
<b>Avg HH Income</b>	\$94,324	\$100,576	\$100,825



# 14647 W 95TH ST

## BUILDING A

Total SF Available	1,760 SF
Dock High Doors	1
Clear Height	13' 8"
Parking	3/1,000 SF



AVAILABLE SPACE

# 9531 ALDEN ST

## BUILDING B

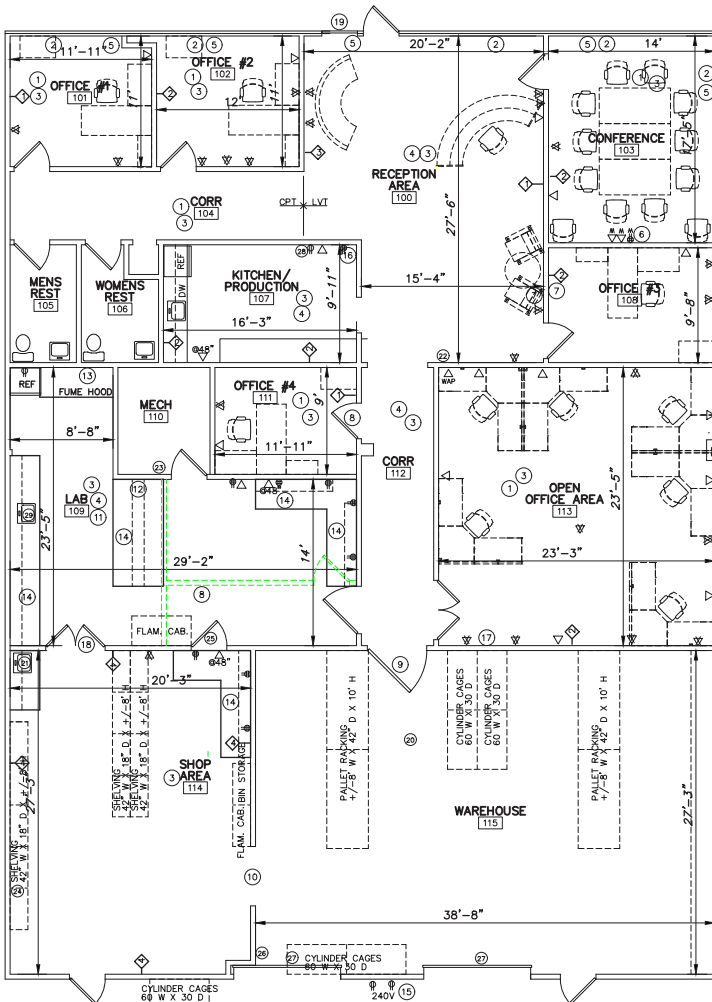
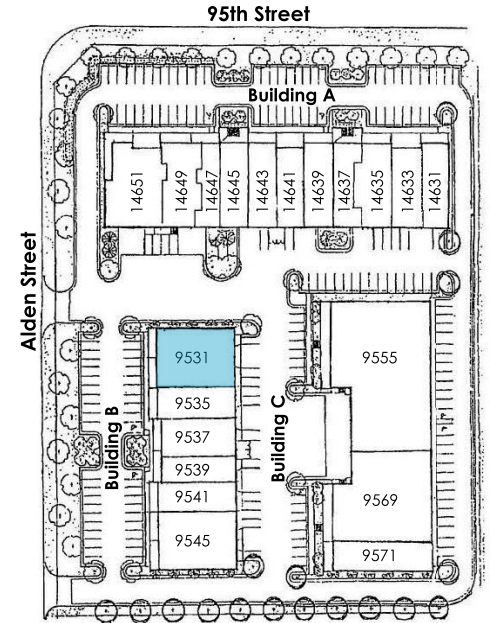
Total SF Available 4,800 SF

Drive In Doors 1

Clear Height 14'4"

Parking 3/1,000 SF

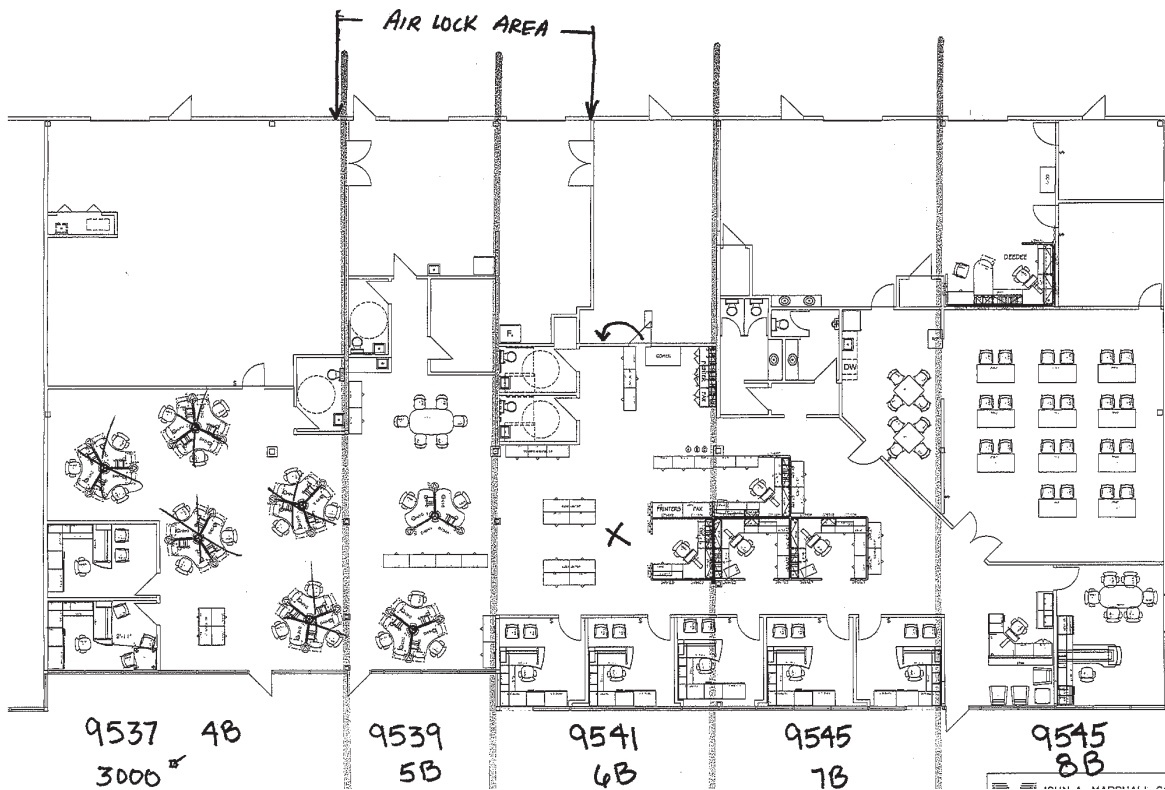
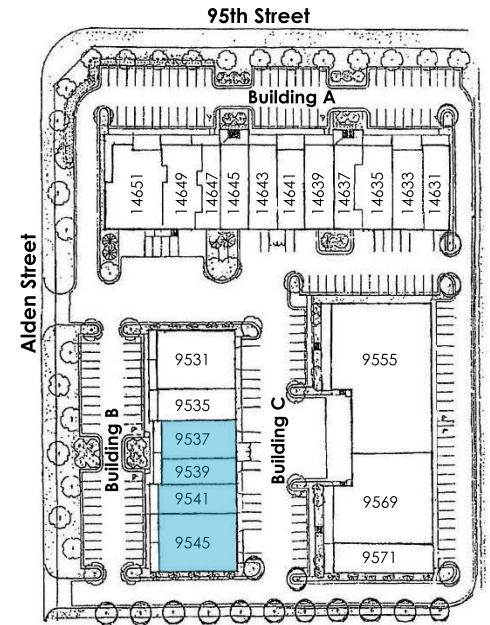
Power 100 Amp Service



# 9545 ALDEN ST

## BUILDING B

Total SF Available	11,700 SF
Drive In Doors	5
Clear Height	10'-14'4"
Parking	3/1,000 SF
Power	100 Amp Service





# FLEX SPACE FOR LEASE



## LEASING CONTACT

**MOLLY CRAWFORD MUNNINGHOFF**

P (816) 701-5013

[mcrawford@copaken-brooks.com](mailto:mcrawford@copaken-brooks.com)

All information furnished regarding property for sale or lease is from sources deemed reliable, but no warranty or representation is made as to the accuracy thereof and the same is subject to errors, omissions, changes of prices, rental or other conditions, prior sale or lease, or withdrawal without notice.