

PREMIER SUBLEASE SPACE AVAILABLE IN 1111 MAIN



SPACE HIGHLIGHTS

- **4,481 RSF Available**
- Stunning views of Downtown Kansas City
- Recently renovated Fitness Center with top of the line facility and equipment
- State-of-the-art conference center with new virtual conferencing technology
- Steps away from the Power & Light Entertainment District
- 24/7 on-site security, building concierge and security turnstiles

LEASING CONTACTS

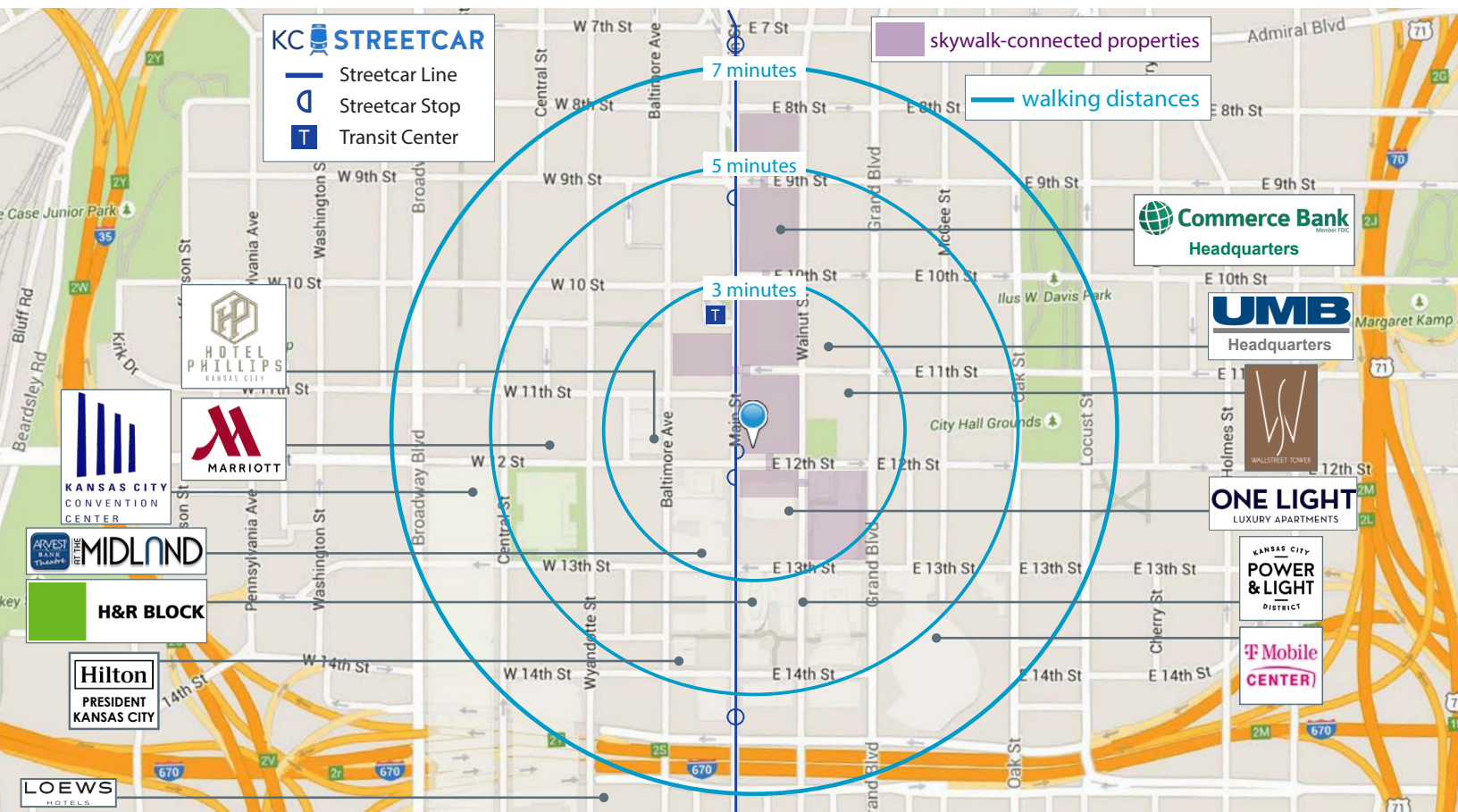
RYAN BIERY, SIOR
P (816) 701-5017
rbiery@copaken-brooks.com

1111 MAIN RENOVATIONS

1111 Main underwent an art-focused upgrade in 2021. Improvements drastically transformed the building and include the removal of the iconic staircase and the addition of a concierge desk, as well as upgrading retail storefronts, installing video walls, creating a feature wall element, and adding security features and equipment. In addition to the aesthetic improvements and new finishes – which incorporate exposed concrete, bright white walls, and natural wood tones – security turnstiles with visitor management systems were installed to elevate the building to current Class A office standards.

- concierge/security desk in rotunda
- polished concrete flooring
- interior aluminum storefronts
- wood/metal switchback stairs
- updated elevator lobby banks
- featured wall element
- video walls and innovative displays
- improved sound system
- security turnstiles with visitor management system

DOWNTOWN KC

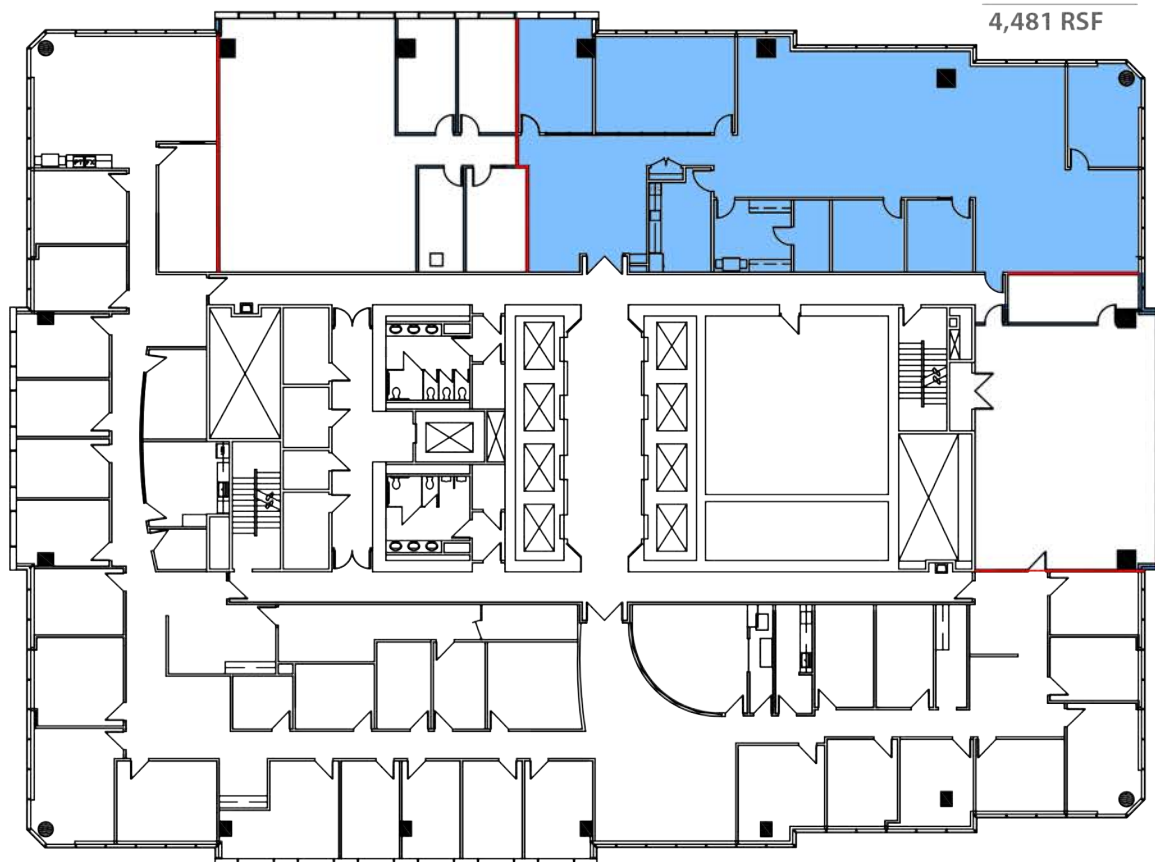


Suite 2050

- **4,481 RSF**
- 2 Private offices
- 3 Conference rooms
- Reception area
- IT room
- Open space with 11 workstations
- Open break area with kitchenette
- Sublease term through 5/31/2025
- Sublease rate \$22.00/RSF
- Space is furnished

 = VACANT

SUITE 2050
4,481 RSF



PREMIER SUBLEASE SPACE AVAILABLE IN 1111 MAIN



LEASING CONTACT

RYAN BIERY, SIOR

P (816) 701-5017

rbiery@copaken-brooks.com

All information furnished regarding property for sale or lease is from sources deemed reliable, but no warranty or representation is made as to the accuracy thereof and the same is subject to errors, omissions, changes of prices, rental or other conditions, prior sale or lease, or withdrawal without notice.