

OFFICE SPACE FOR LEASE IN BRIARCLIFF



SPACE HIGHLIGHTS

- **2,608 - 37,212 SF Available**
- Lobby, elevators, and common area bathrooms were recently renovated
- Moving to Briarcliff is an investment which provides long lasting value to discerning space users
- Located within 8 minutes of Downtown, the River Market, Crossroads and more!
- Just 13 minutes from Johnson County
- Restaurants, shopping, and banking within walking distance to The Village at Briarcliff
- On site nature trails provide outdoor exercise amenities along the river
- Stunning views of the Downtown Skyline

LEASING CONTACTS

RYAN BIERY, SIOR

P (816) 701-5017

rbieri@copaken-brooks.com

MOLLY CRAWFORD MUNNINGHOFF

P (816) 701-5013

mcrawford@copaken-brooks.com

JOHN D. COE, SIOR, CCIM

P (816) 701-5064

jcoe@copaken-brooks.com

Briarcliff

Stunning views, countless amenities and first class offices are just some of the reasons Briarcliff is the ultimate place for your business. Briarcliff has easy access to all Metro highways, making you easily accessible to the entire Metro area. The Village at Briarcliff provides incredible restaurants, shopping and more within walking distance. If that's not enough, Downtown, the River Market and Crossroads are just an 8 minute drive. Briarcliff perfectly combines live, work and play to make the ideal place for your business.

Briarcliff Amenities

Restaurants

- Briarcliff Barrio Mexican Kitchen
- Greenacres Deli
- Headrush Roasters
- Piropos
- Phillytime
- Trezo mare

Shopping

- Budget Blinds
- California Closests
- Decori
- Design in the City
- The Foot Spo
- Made in KC
- Nell Hill's

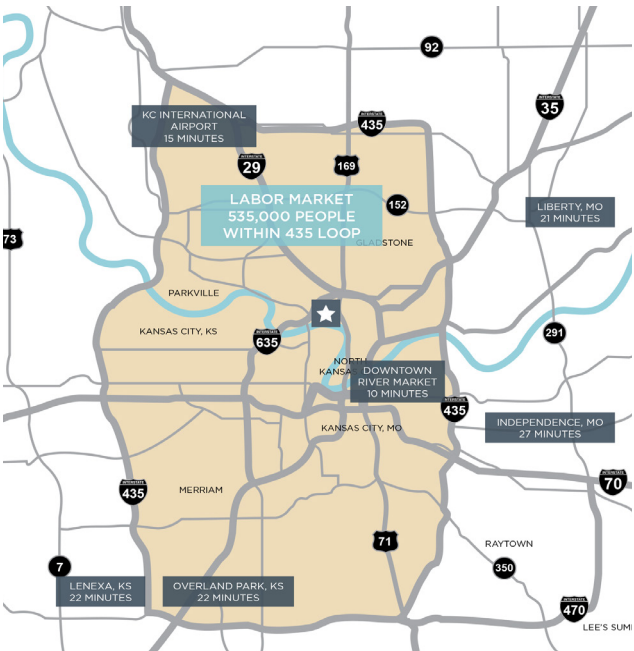
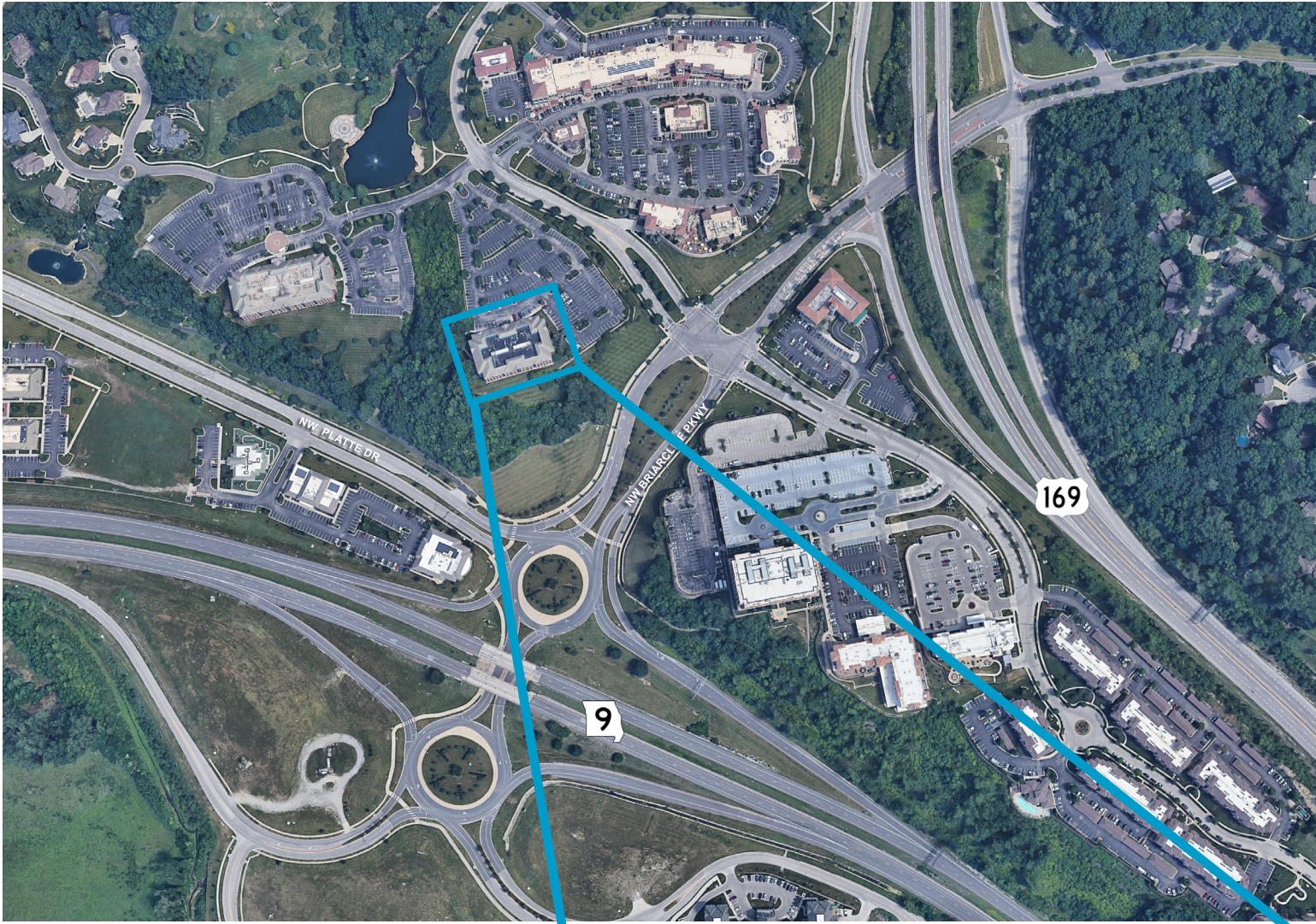
Services

- Buenos Aires Room and Wedding Chapel
- Eclectica
- Edward Jones
- GreenAcres Market
- Invisalign
- L'acqua Nails & Lashes
- Metro KC Fitness
- Pinot's Palette
- Rajeunir Medical Spa
- Royal Room at Briarcliff
- The Spa at Briarcliff
- Top Cleaners/Tailor
- Westrock Orthodontics

Briarcliff I Amenities

- Recently renovated lobby, elevators & common area bathrooms
- On site property management
- On site nature trails
- Gorgeous skyline views

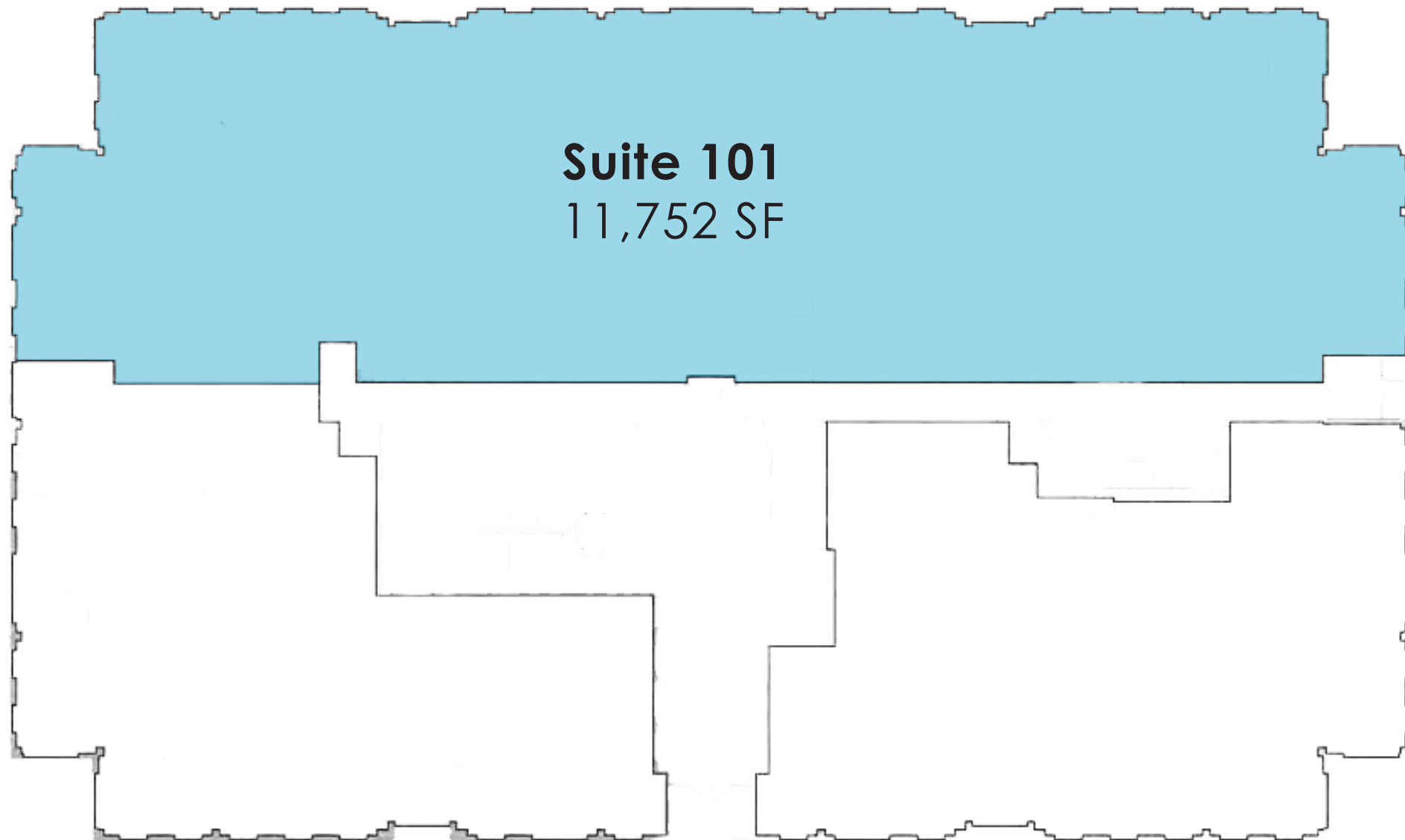




First Level

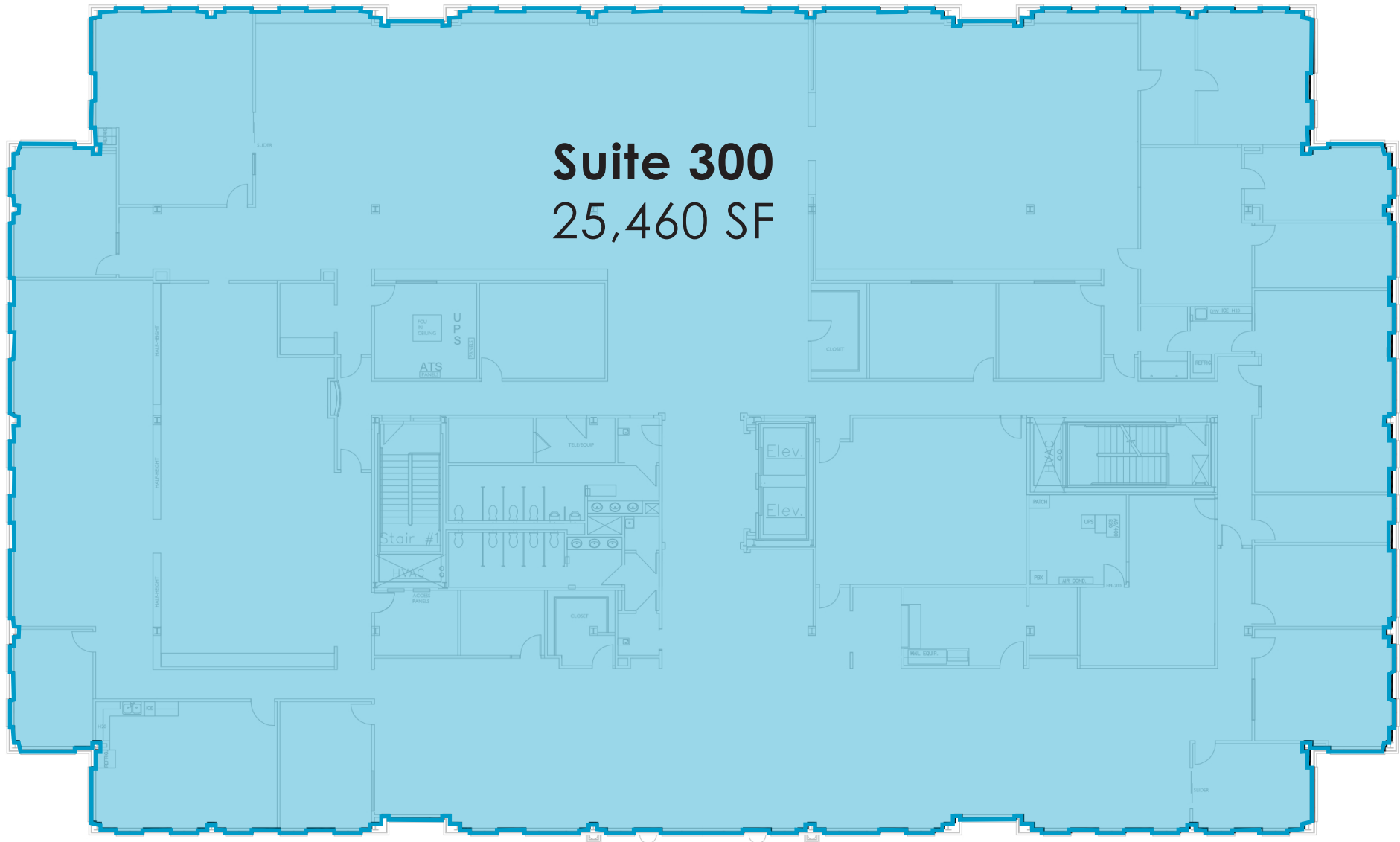
Suite 101

11,752 SF



 = Suite Available

Third Level



 = Suite Available

OFFICE SPACE FOR LEASE IN BRIARCLIFF



LEASING CONTACTS

RYAN BIERY, SIOR
P (816) 701-5017
rbiery@copaken-brooks.com

MOLLY CRAWFORD MUNNINGHOFF
P (816) 701-5013
mcrawford@copaken-brooks.com

JOHN D. COE, SIOR, CCIM
P (816) 701-5064
jcoe@copaken-brooks.com

All information furnished regarding property for sale or lease is from sources deemed reliable, but no warranty or representation is made as to the accuracy thereof and the same is subject to errors, omissions, changes of prices, rental or other conditions, prior sale or lease, or withdrawal without notice.