

## OFFICE FOR LEASE OR SALE



### OFFICE HIGHLIGHTS

- **Suite 200 - 2,253 RSF**
- **Suite 204 - 4,351 RSF**
  - **Suites can be combined for 6,604 RSF**
- Prime location within walking distance to the Country Club Plaza
- Adjacent to Woodside Village which includes the health & tennis club and 36,000 SF of new high end retail shops including Blue Sushi Sake Grill, The Roasterie, and Unforked
- Building amenities include a full kitchen, fitness center, and locker rooms
- Covered parking garage and surface parking available

### BUILDING CONTACT

**MOLLY CRAWFORD MUNNINGHOFF**  
P (816) 701-5013  
mccrawford@copaken-brooks.com

# WESTWOOD, KANSAS





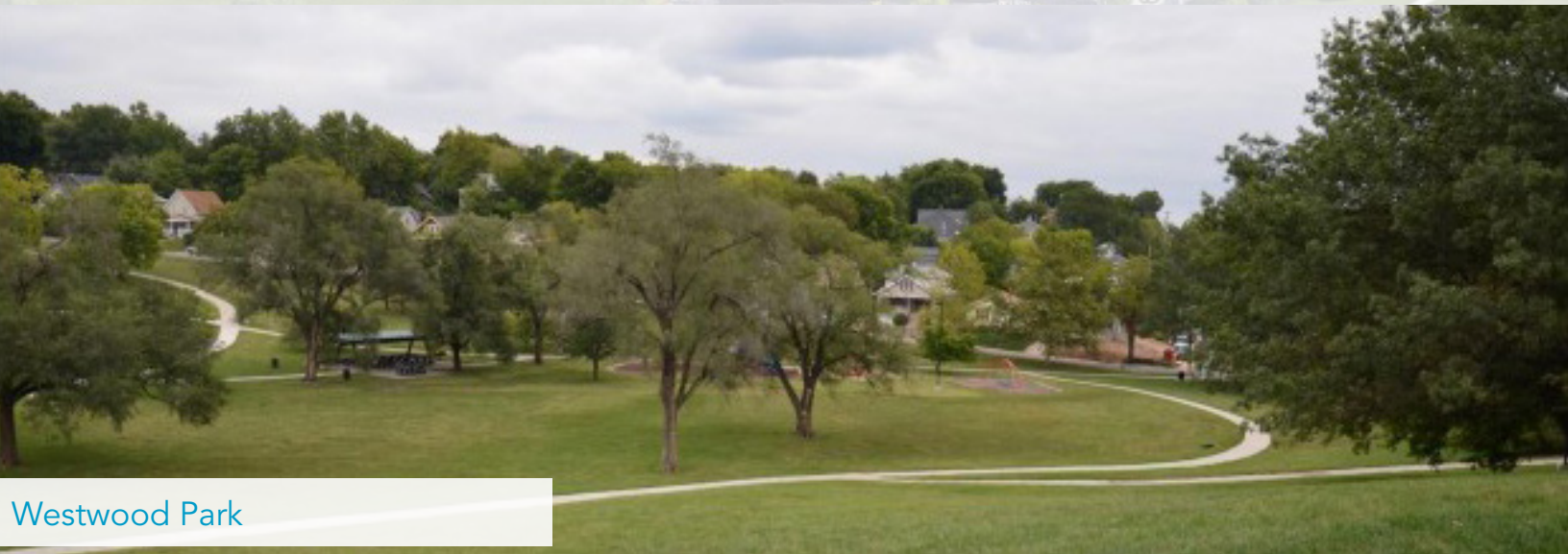
Woodside Village: New town center for the City of Westwood



Woodside Health & Tennis Club



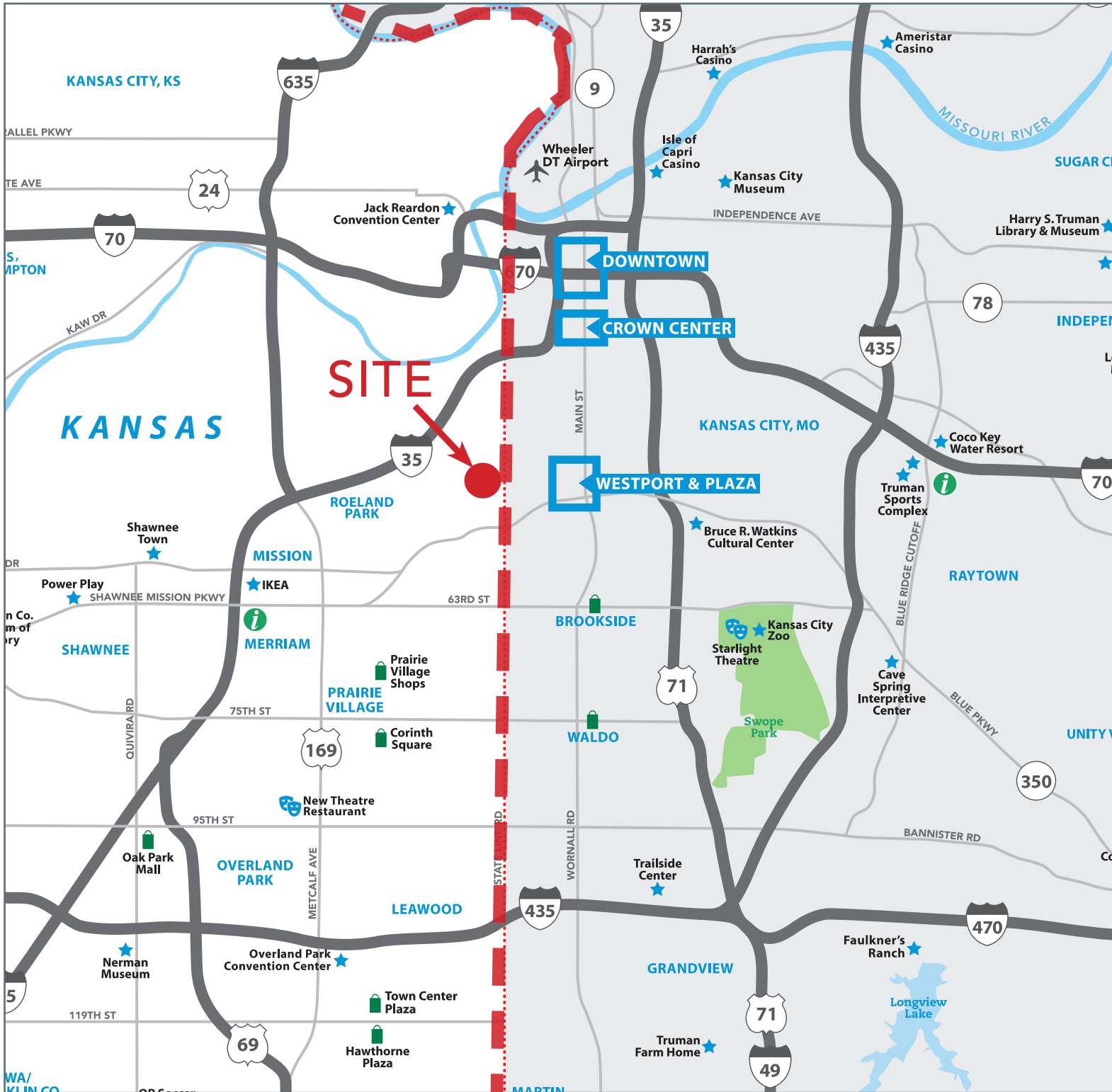
Within walking distance of Country Club Plaza



Westwood Park

W48th St

W48th St

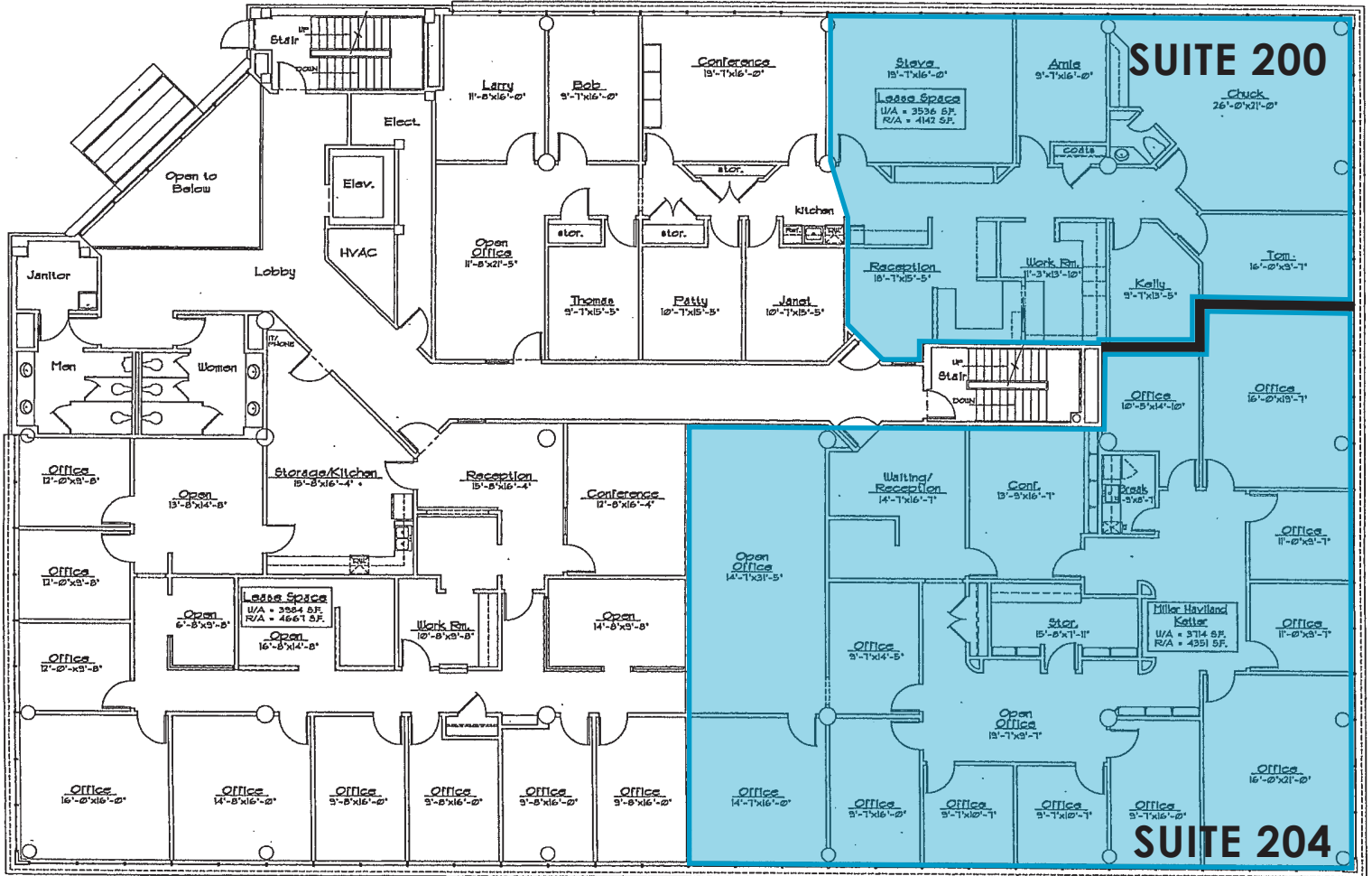


● = Site      — = State Line Road

**SUITE 200:** 2,253 SF

**SUITE 204:** 4,351 SF

CAN BE COMBINED FOR 6,604 SF



# OFFICE FOR LEASE OR SALE



## BUILDING CONTACT

**MOLLY CRAWFORD MUNNINGHOFF**

P (816) 701-5013

[mcrawford@copaken-brooks.com](mailto:mcrawford@copaken-brooks.com)

All information furnished regarding property for sale or lease is from sources deemed reliable, but no warranty or representation is made as to the accuracy thereof and the same is subject to errors, omissions, changes of prices, rental or other conditions, prior sale or lease, or withdrawal without notice.