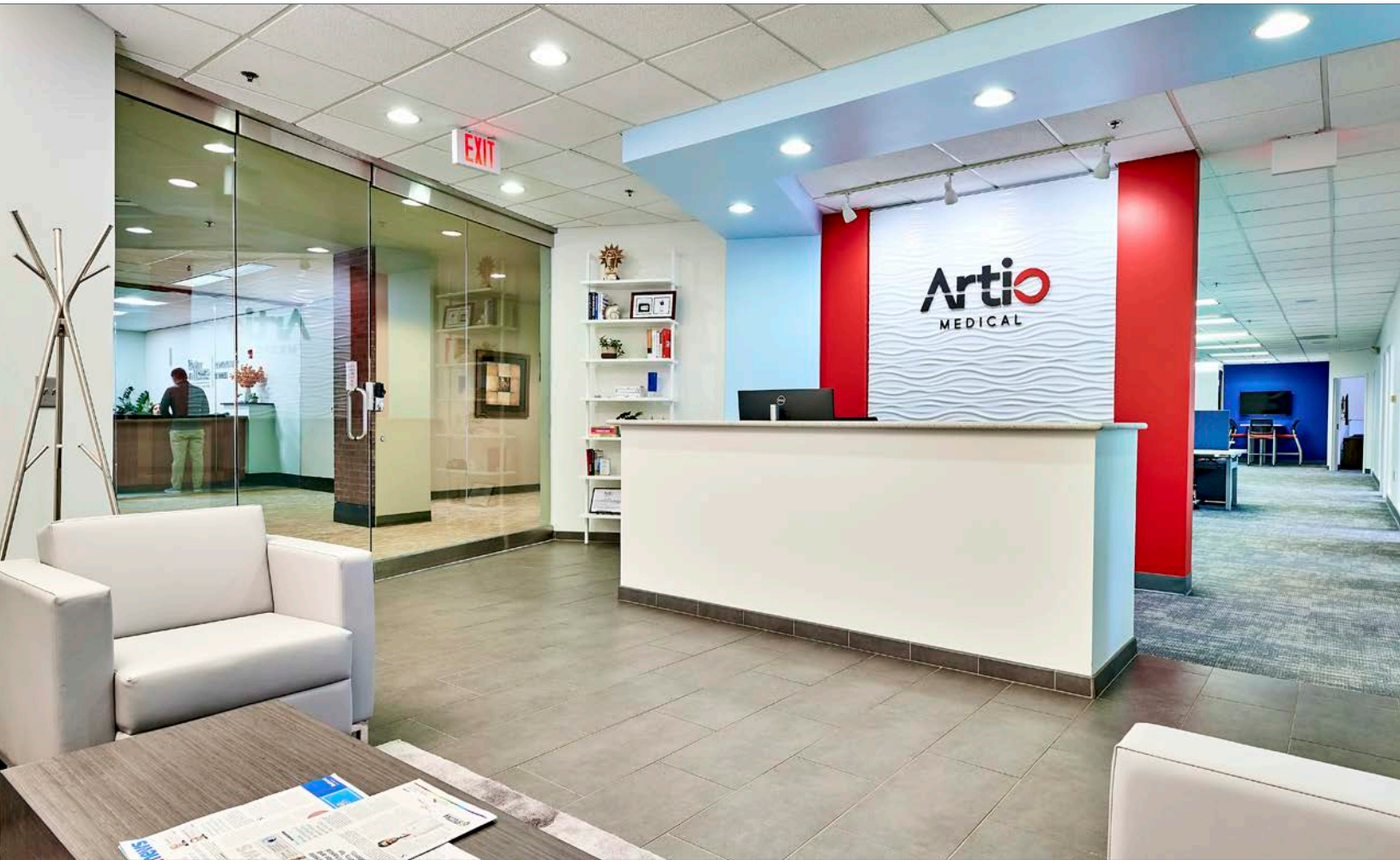


## OFFICE SPACE FOR SUBLEASE



### OFFICE HIGHLIGHTS

- **Suite 202: 3,964 SF Available**
- Sublease available September 1, 2022
- Parking: 3 covered reserved parking spaces in the Building Garage and 2 reserved parking spaces on the top parking lot under the second floor of the Building
- Located along the Missouri/Kansas State Line with immediate access to Ward Parkway and 75th Street.
- Tenants include KU Eye Center and Specialty Surgery, Better Homes and Garden Real Estate, University of Kansas Hospital, First American Title, First State Bank, and more.

### SUBLEASE CONTACT

**JOHN D. COE**, SIOR, CCIM  
P (816) 701-5064  
jcoe@copaken-brooks.com

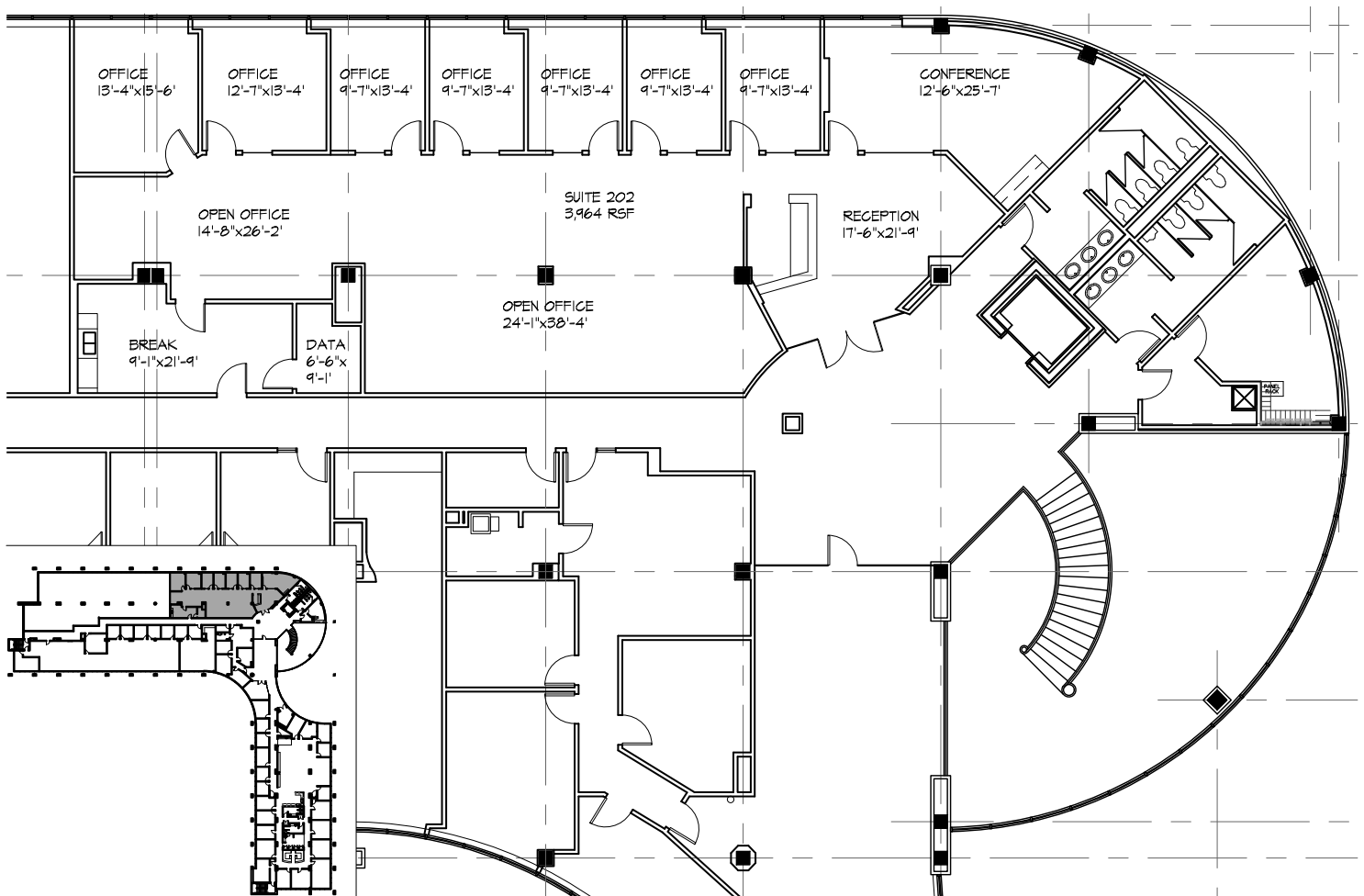


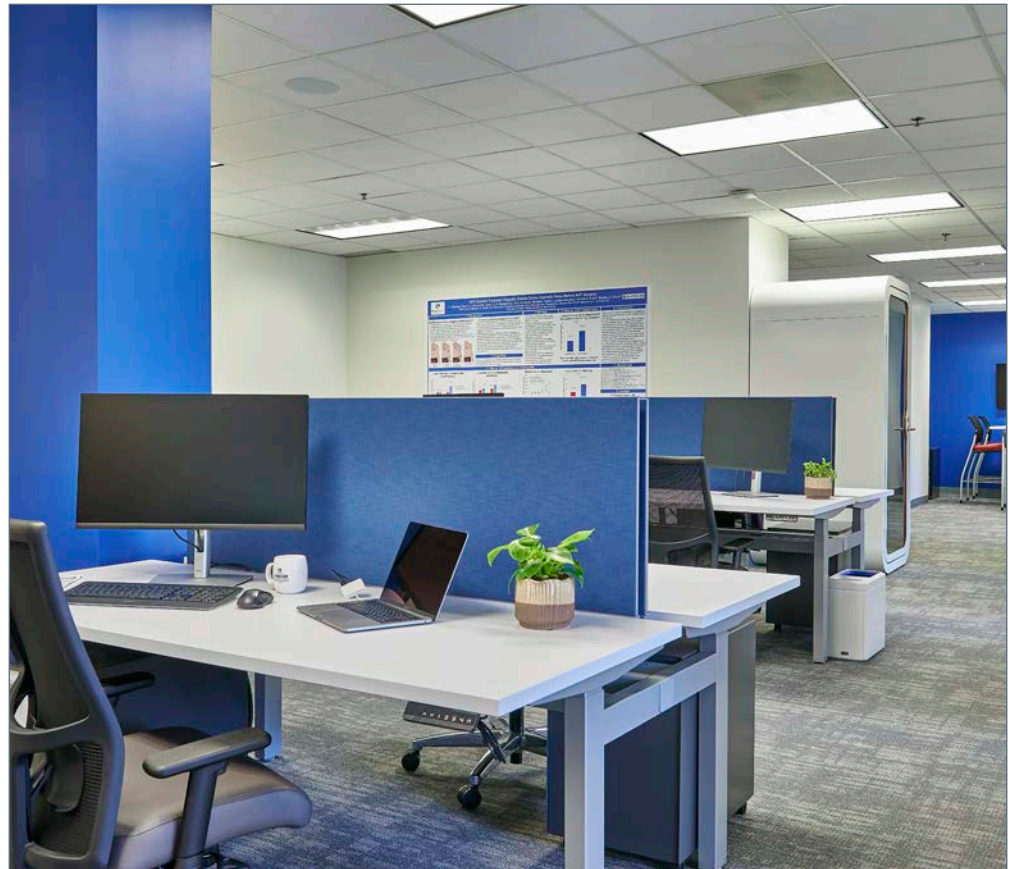
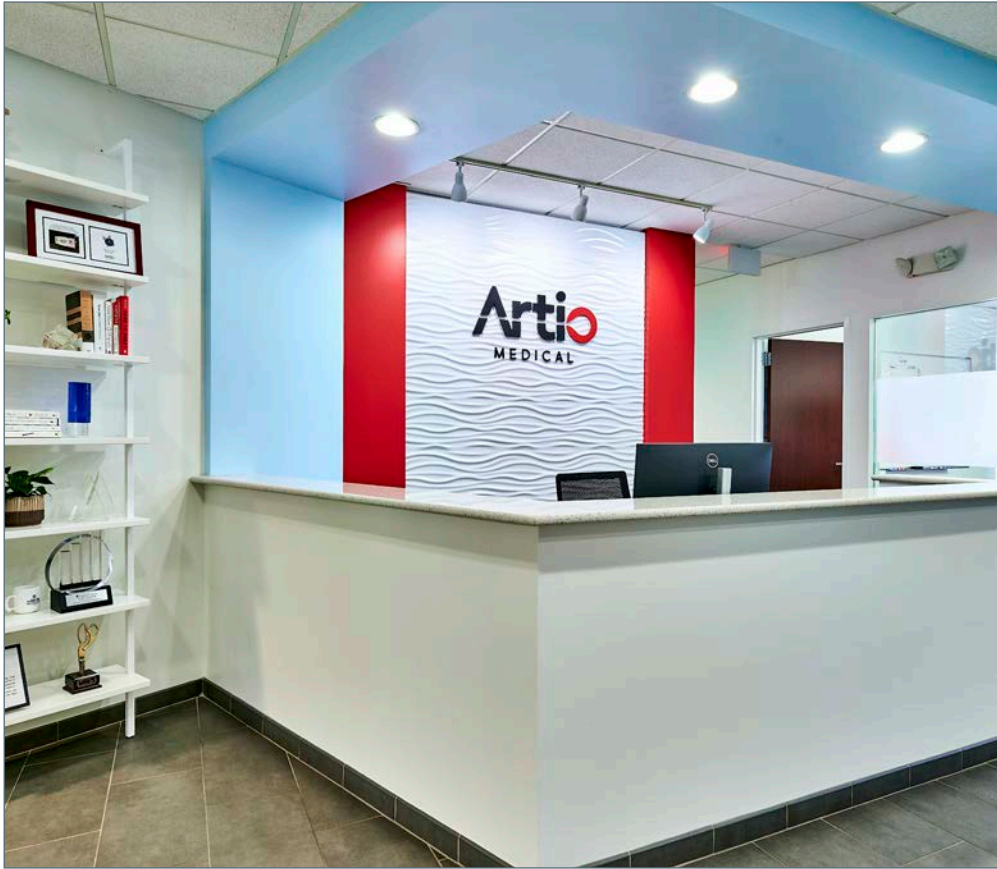
**DEMOGRAPHIC HIGHLIGHTS**

	1 mile	3 miles	5 miles
<b>Population</b>	11,303	246,481	783,983
<b>Households</b>	5,193	112,890	329,102
<b>Avg HH Income</b>	\$124,676	\$91,914	\$85,896

# Suite 202

## 3,964 SF





# OFFICE SPACE FOR SUBLEASE



## SUBLEASE CONTACT

**JOHN D. COE, SIOR, CCIM**  
P (816) 701-5064  
jcoe@copaken-brooks.com

All information furnished regarding property for sale or lease is from sources deemed reliable, but no warranty or representation is made as to the accuracy thereof and the same is subject to errors, omissions, changes of prices, rental or other conditions, prior sale or lease, or withdrawal without notice.