

## PREMIER RETAIL SPACE AVAILABLE IN TOWN PAVILION



### RETAIL HIGHLIGHTS

- **970 SF restaurant/retail space available** on Main Street next to Planet Sub
- **1,389 - 5,100 SF 2nd generation restaurant space available** on Petticoat Lane with an outdoor patio.
- KC Streetcar stop directly in front of the building on Main Street
- Entrances from the street and from the interior of the 800,000 SF Office Building
- Connected to the Downtown Sky Walk system, providing enclosed access to over 25,000 people in the Central Business District

### LEASING CONTACTS

**ERIN JOHNSTON**

P (816) 701-5028

[ejohnston@copaken-brooks.com](mailto:ejohnston@copaken-brooks.com)

# DOWNTOWN KC

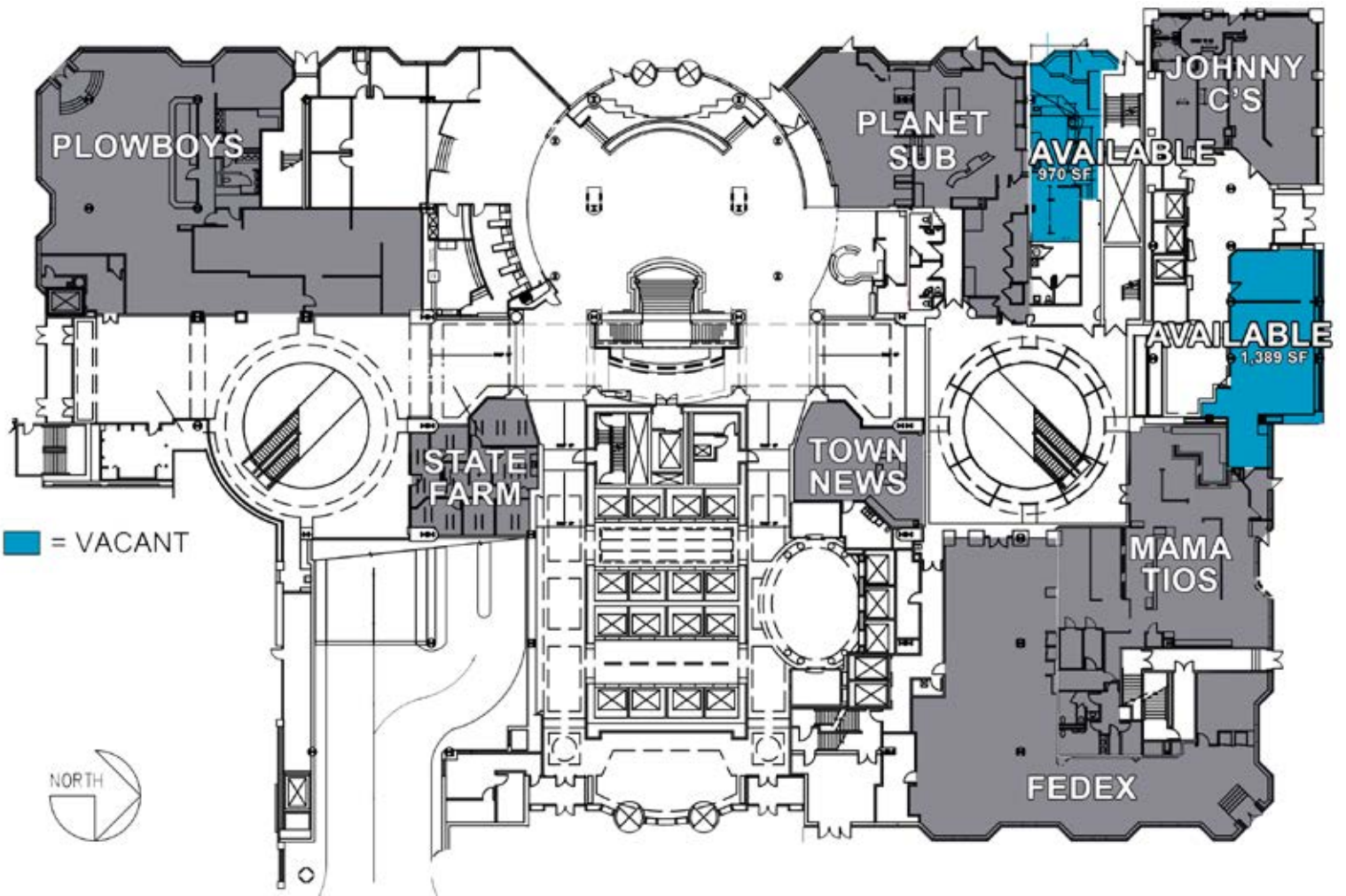


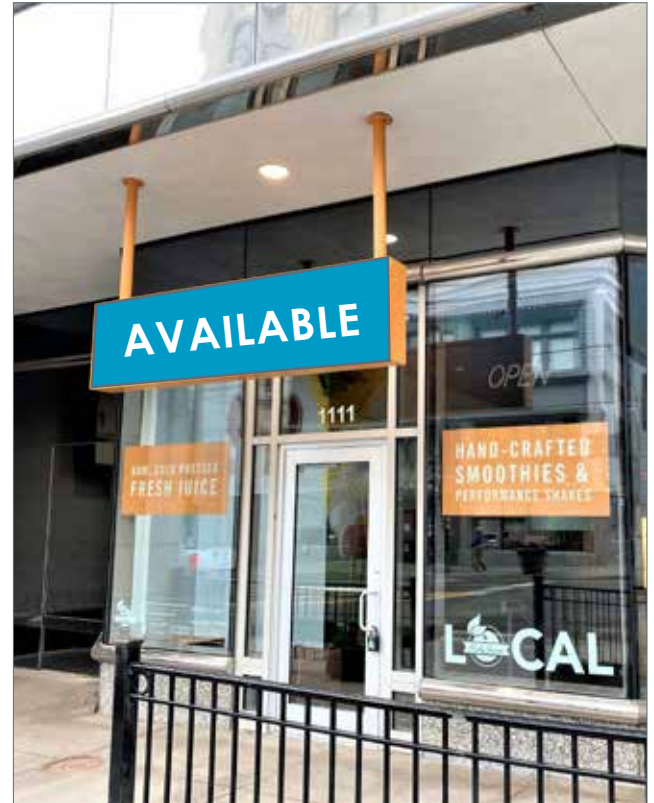
Downtown is the prime driver of Kansas City's economy, where 34% of all the City's jobs are concentrated.

## GREATER DOWNTOWN

<b>Residents</b>	19,996
<b>Employees</b>	123,191
<b>Annual Visitors</b>	25.2M
<b>Annual Visitor Spending</b>	\$3.15B

Detailed information can be found on Pages 6-8.





## TOWN PAVILION RENOVATIONS

Town Pavilion is being redefined for an unparalleled tenant experience as a high-end modernized oasis designed around community and connectivity. Renovations are currently underway with expected completion June 2021.



Today, more than ever, place matters to the future of our businesses and livelihood. So we invite you to locate your business in a place attracting millennials seeking a vibrant urban lifestyle, a place where companies can recruit from an educated, highly-skilled workforce, and a place that prioritizes the health and well-being of our community. Below are just a few reasons why businesses are relocating to Downtown Kansas City.

## **VIBRANT URBAN ENVIRONMENT**

Downtown has become a thriving mixed-use district. Vibrant urban living in historic neighborhoods are attracting residents and workers who want to enjoy Downtown's expansive array of cultural, entertainment, and recreation options.

## **EXCEPTIONAL ACCESS TO TALENT**

Downtown is positioned for outstanding access to the area's talent pool. With 27 colleges & universities within an hour of Downtown, businesses can recruit young, educated graduates.

## **THRIVING BUSINESS CENTER**

Downtown is the prime driver of Kansas City's economy, where 34% of all the City's jobs are concentrated. Downtown has more than 110,000 wage and salaried workers, 26.5 million square feet of commercial office space, making it the largest business district in the region.

## **INNOVATION HUB**

Downtown's density allows people from corporations, research institutions, and startups to intersect on a daily basis, creating numerous opportunities for innovation.

## **PRIORITIZING HEALTH & WELLNESS**

Nurtured by "social infrastructure" such as libraries, schools, grocery stores, and parks - Downtown's concentration of resources generate lifesaving networks of social ties that combat isolation and build community.

## **UNPARALLELED CONNECTIVITY**

Downtown is the center of a regional transit system, consisting of 38 bus routes, 3 bus rapid transit lines, and a streetcar route. Downtown connects seamlessly with five major interstates.



**PLACE MATTERS**

Build your business in a vibrant urban environment attracting a young, educated workforce

**Downtown Kansas City**  
[www.downtownkc.org/business](http://www.downtownkc.org/business)

Over the past 20 years, Downtown Kansas City has been transformed from a 9-to-5 office district into a dynamic, mixed-use setting for business, innovation, education, cultural and civic activity, as well as one of the fastest-growing residential locations in the region. Downtown Kansas City's vibrant live-work dynamic makes it a magnet for young workers seeking an affordable, urban lifestyle.

## **GROWING RESIDENTIAL NEIGHBORHOOD**

Downtown emerged as a location of choice for recent college graduates, drawn by job growth and easy access to restaurants, nightlife, and other urban amenities. More than 50% of the 31,000 people living in Downtown are between the ages of 20-34, making it a young professional haven.

## **CULINARY EXCELLENCE**

Downtown Kansas City is the region's center for the finest culinary destinations, offering a great assortment of restaurants, outdoor cafés, rooftop bars, and cuisines from all over the globe. It's a foodie's paradise.

## **VIBRANT ARTS & CULTURE SCENE**

Downtown is the regional center for art, culture, and entertainment with an exciting offering of art galleries, museums, theaters, and performing arts venues.

## **WORLD-CLASS HEALTHCARE**

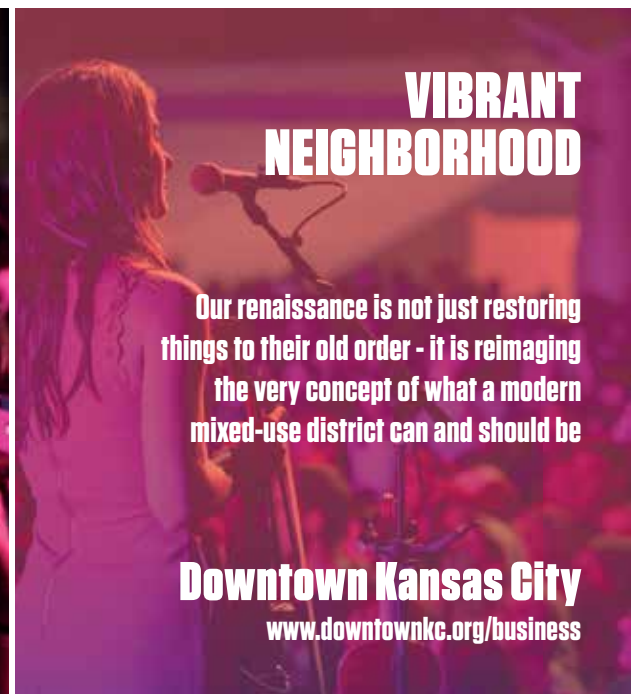
Downtown is home to the UMKC Health Science District with more than 3,300 students and 12,800 employees.

## **PREMIER EVENTS**

Events and festivals will be returning Downtown soon. Annual events include the 18th Street Fashion Show, Big12 Men's Basketball Tournament, Celebration at the Station, City Market, Boulevardia, Fringe Festival, Irish Fest, and Middle of the Map Festival.

## **BEAUTIFUL PARKS & OPEN SPACE**

Downtown's walkability score is 96 and offers jobs and parks within steps from each other. Downtown's bike lanes, open spaces, and parks build exercise and recreation into everyday life.



More than \$9 billion in developments have been completed or are currently under construction in Downtown Kansas City. Downtown has become a thriving, mixed-use business district. Vibrant urban living and a broad range of housing types in historic neighborhoods are attracting residents and workers who want to enjoy Downtown's expansive array of cultural, entertainment, dining and recreation options.

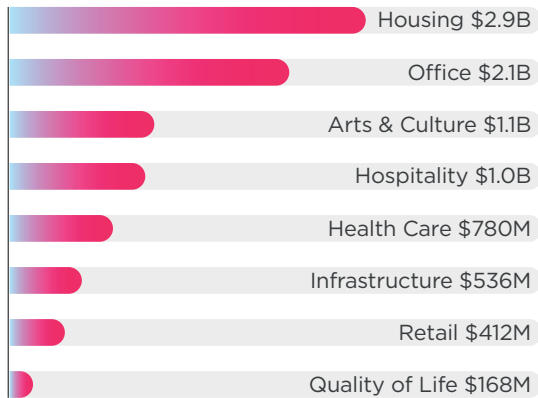
## \$9.1 BILLION

Development completed or currently under construction in since 2000

## \$2.6 BILLION

Development planned to start construction in the next two years

### Investment by Category



52% of projects completed in Downtown since 2000 have been housing developments



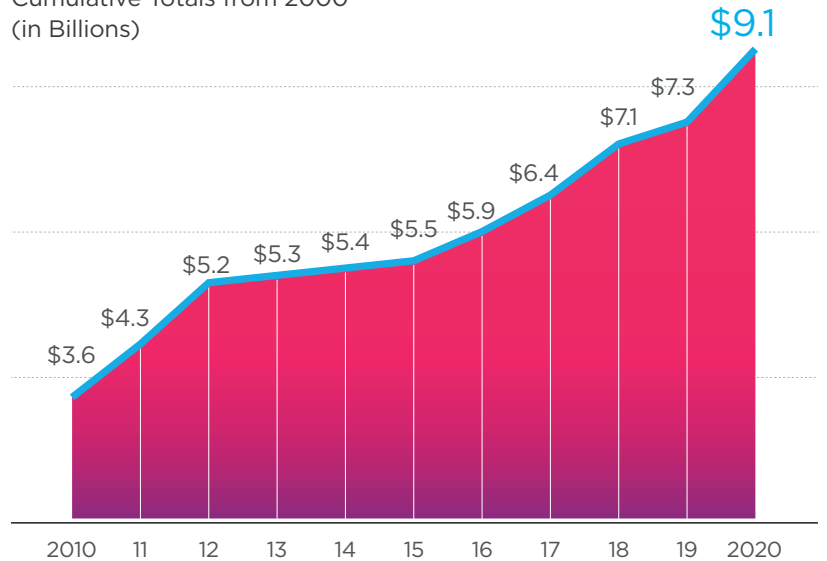
20% of projects completed in Downtown since 2000 have been office developments



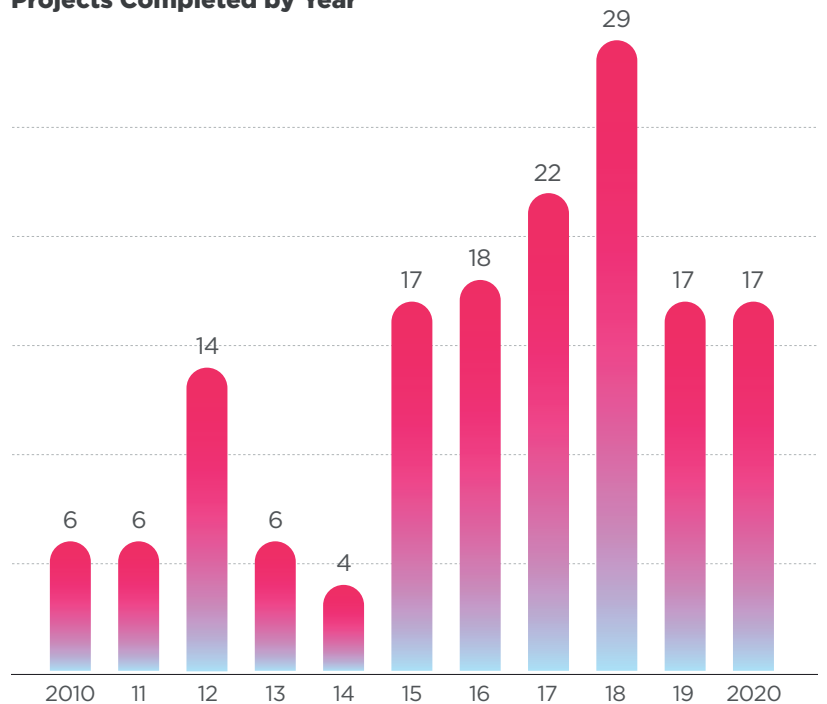
10% of projects completed in Downtown since 2000 have been arts & culture developments

### Downtown Development History

Cumulative Totals from 2000  
(in Billions)



### Projects Completed by Year





# PREMIER RETAIL SPACE AVAILABLE IN TOWN PAVILION



## LEASING CONTACT

**ERIN JOHNSTON**

P (816) 701-5028

[ejohnston@copaken-brooks.com](mailto:ejohnston@copaken-brooks.com)

All information furnished regarding property for sale or lease is from sources deemed reliable, but no warranty or representation is made as to the accuracy thereof and the same is subject to errors, omissions, changes of prices, rental or other conditions, prior sale or lease, or withdrawal without notice.