

## OFFICE SPACE FOR LEASE



### OFFICE SPACE HIGHLIGHTS

- Suite 103 Available- 2,342 RSF
- Prime location within walking distance to the Country Club Plaza
- Adjacent to Woodside Village which includes the health & tennis club and 36,000 SF of new high end retail shops including Blue Sushi Sake Grill, The Roasterie, and Eat Fit Go
- Building amenities include a full kitchen, fitness center, and locker rooms
- Covered parking garage and surface parking available

### LEASING CONTACTS

**MOLLY CRAWFORD MUNNINGHOFF**  
P (816) 701-5013  
mccrawford@copaken-brooks.com

# WESTWOOD, KANSAS





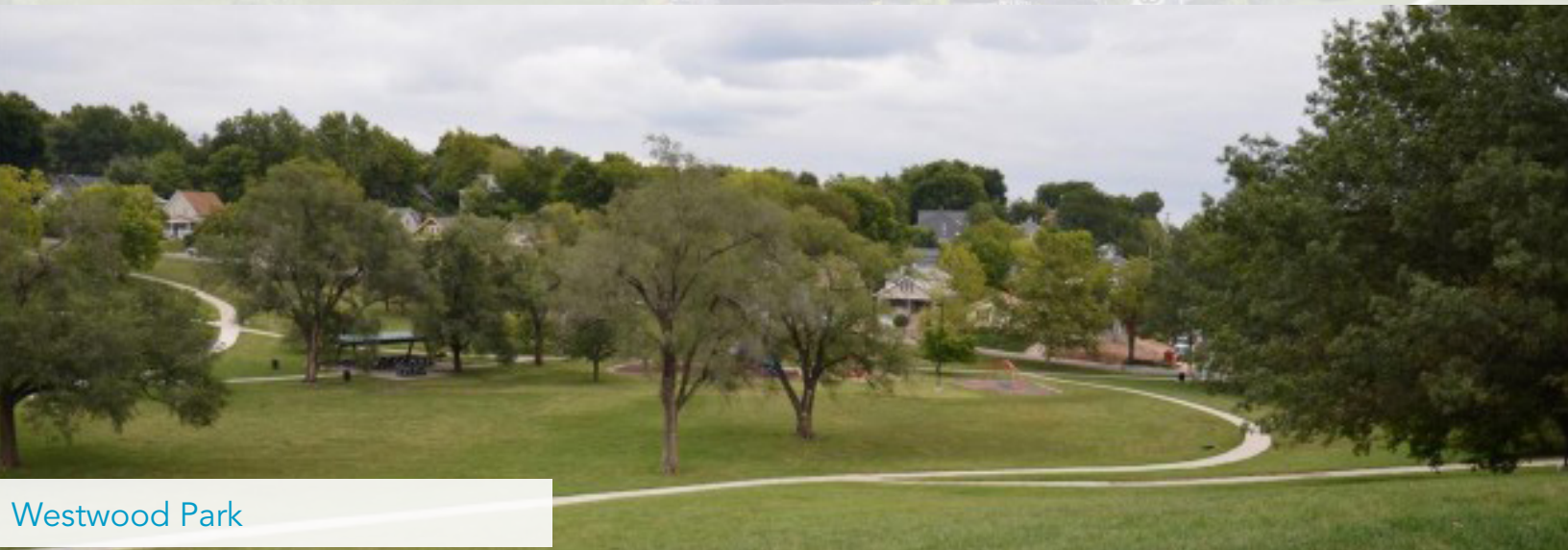
Woodside Village: New town center for the City of Westwood



Woodside Health & Tennis Club



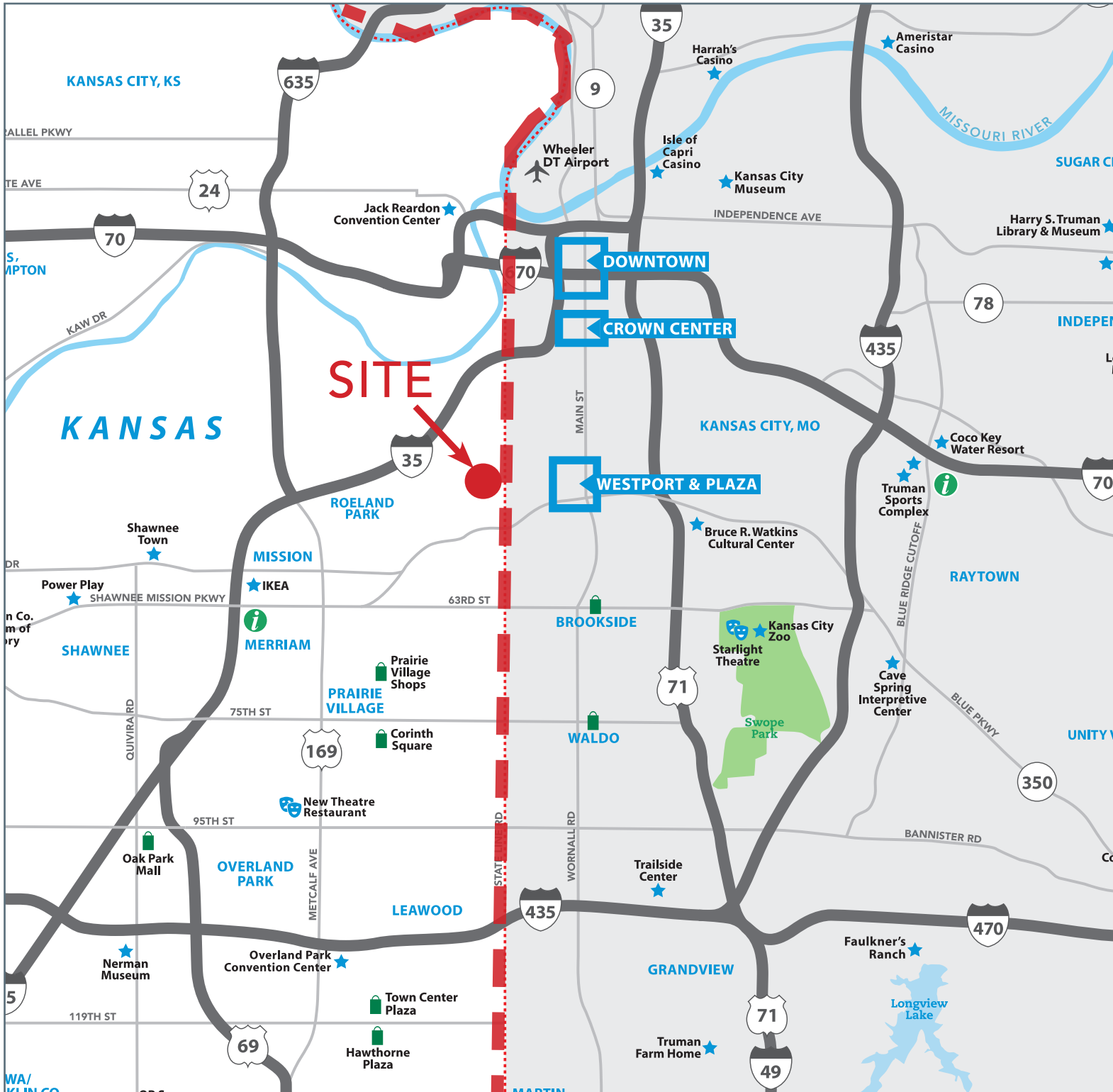
Within walking distance of Country Club Plaza



Westwood Park

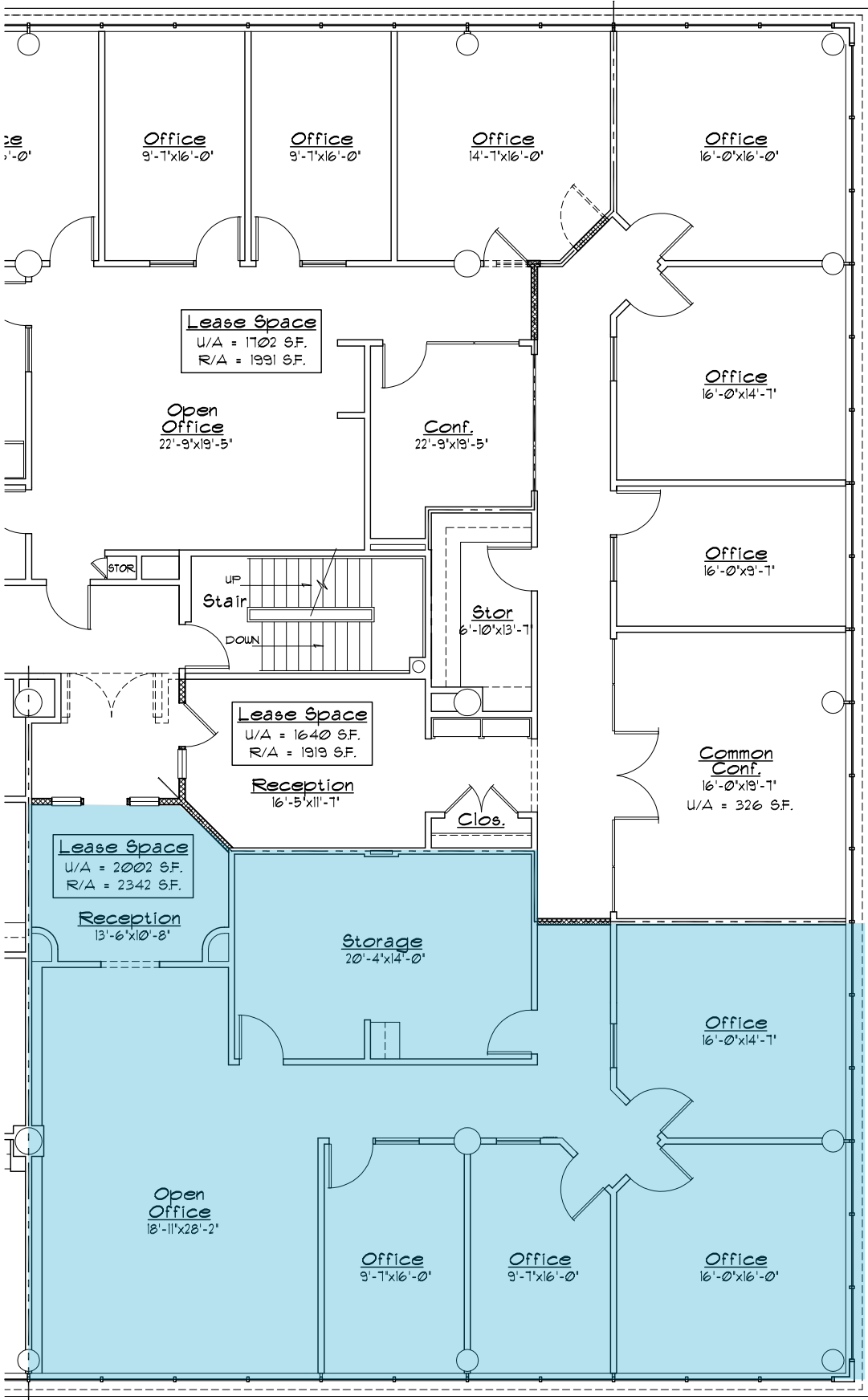
W48th St

W48th St



● = Site      — = State Line Road

SUITE 103: 2,342 SF



# OFFICE SPACE FOR LEASE



## LEASING CONTACT

**MOLLY CRAWFORD MUNNINGHOFF**

P (816) 701-5013

[mcrawford@copaken-brooks.com](mailto:mcrawford@copaken-brooks.com)

All information furnished regarding property for sale or lease is from sources deemed reliable, but no warranty or representation is made as to the accuracy thereof and the same is subject to errors, omissions, changes of prices, rental or other conditions, prior sale or lease, or withdrawal without notice.