

LAND FOR SALE



LAND HIGHLIGHTS

- 7.8 Acres Available
- Located in rapidly growing market
- Excellent access to Kansas 7 Highway
- Utilities on site
- Zoning: C-1 / Neighborhood retail and small scale neighborhood office, low intensity retail and civic use.
- Excellent location for education, church, multifamily, or neighborhood commercial
- Sale Price: Contact Broker

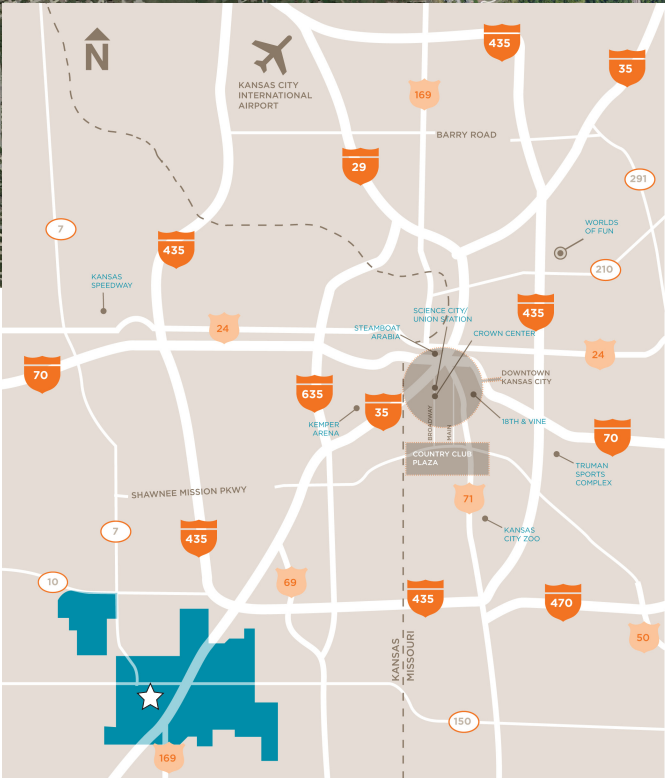
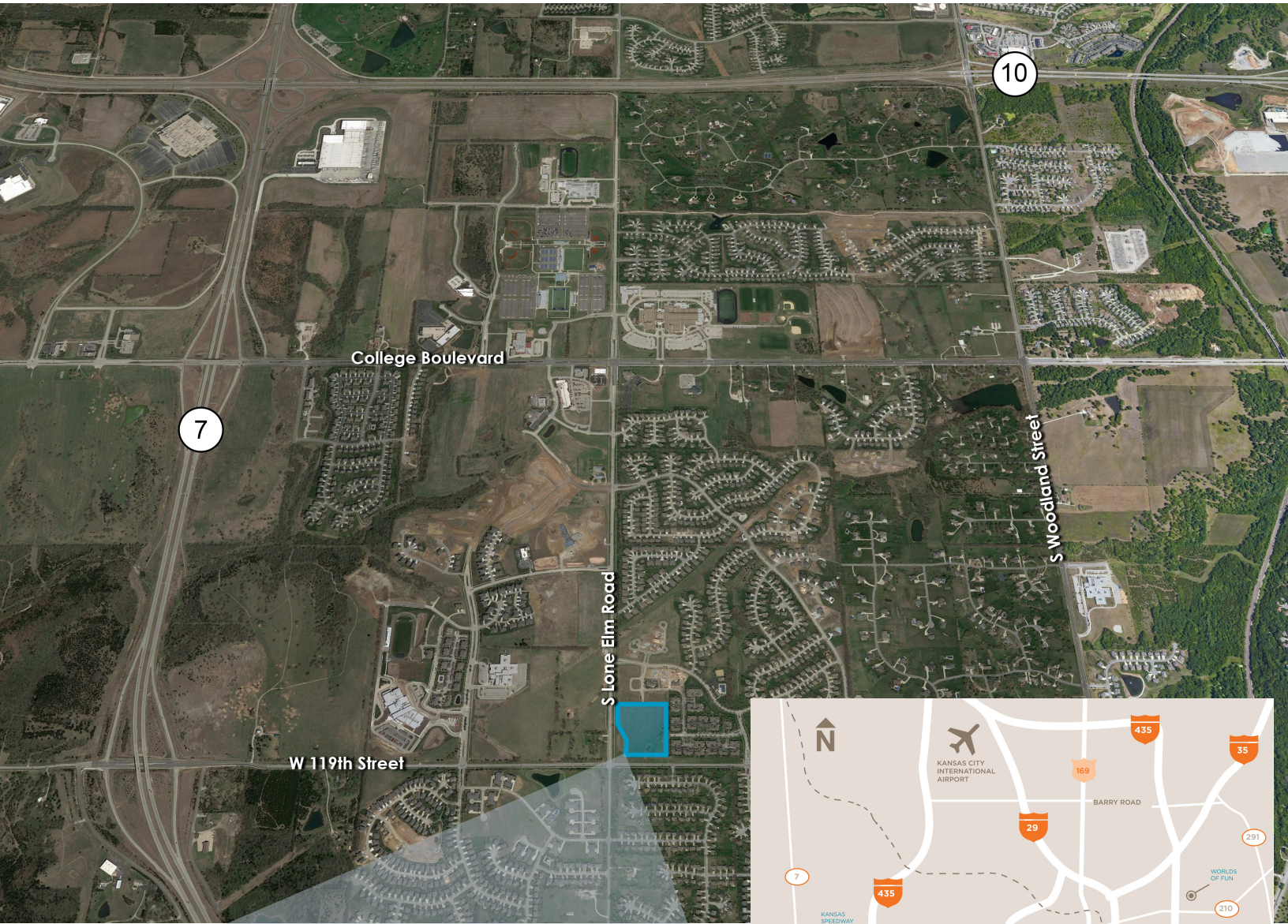
CONTACT

MOLLY CRAWFORD MUNNINGHOFF

P (816) 701-5013

mcrawford@copaken-brooks.com

OLATHE, KANSAS



OLATHE KEY FACTS

140,545

Population

30.82

Median Age



Average
Household Size

\$85,318

Median Houshold
Income

OLATHE INCOME



\$85,318

Median
Houshold
Income



\$35,771

Per Capita
Income



\$85,318

Median Net
Worth

WORKFORCE HIGHLIGHTS

- Access to over 1.25 million workers in an 20-county laborshed
- 44% of the population over 25 has a Bachelor's Degree or higher (Olathe, KS)
- Kansas City MSA unemployment rate of 6.0% (9/14)
- One of the fastest growing major job markets in the Midwest (KC MSA)
- Realitively lower cost of living than most major metros

MAJOR EMPLOYERS

Garmin International
Honeywell
Olathe Medical Center
Johnson County Government
FAA/Air Route Traffic Control Center
Pepsi Beverages Company

MidAmerica Nazarene University
Sysco Food Services of Kansas City
TransAm Trucking Inc.
Tyson Foods
Farmers Insurance
& many more

DEMOGRAPHIC HIGHLIGHTS

	1 mile	3 miles	5 miles
2020 Population	7,891	58,354	126,911
2020 Avg HH Income	\$133,938	\$106,322	\$105,305
2020 Med HH Income	\$116,346	\$88,966	\$85,068

LAND FOR SALE



CONTACT

MOLLY CRAWFORD MUNNINGHOFF

P (816) 701-5013

mcrawford@copaken-brooks.com

All information furnished regarding property for sale or lease is from sources deemed reliable, but no warranty or representation is made as to the accuracy thereof and the same is subject to errors, omissions, changes of prices, rental or other conditions, prior sale or lease, or withdrawal without notice.