

CAMBRIDGE BUSINESS PARK - BUSINESS CENTER 5



OFFICE/INDUSTRIAL HIGHLIGHTS

- 19,235 SF Office/Warehouse Center with quiet setting overlooking I-35 corridor
- Accommodates large and small businesses
- Instant accessibility to Interstate 35 and the city's primary thoroughfares
- Appropriate for high-tech, showroom, sales/service, warehouse and office applications
- Positioned in well-maintained and secured business park setting
- Ample on-site parking
- Great location central to the city's major thoroughfares; moments from the Plaza, Crown Center, Westport and Downtown

LEASING CONTACTS

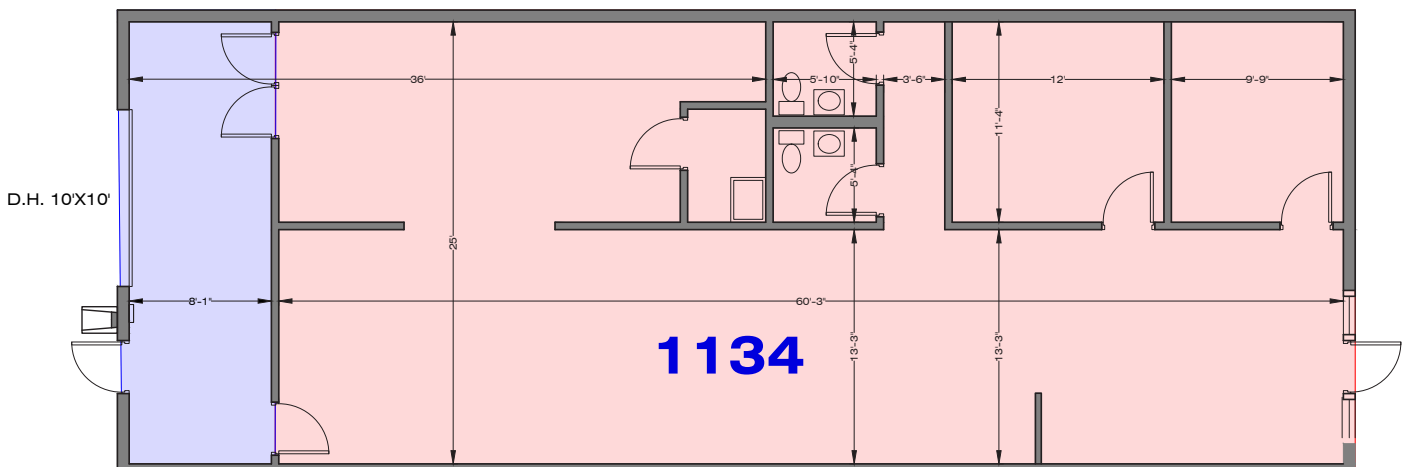
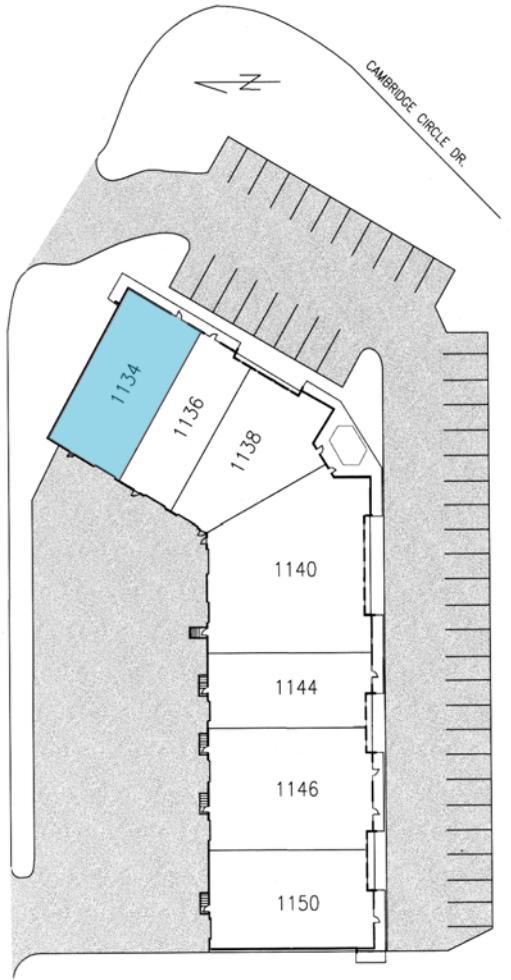
JEREMIAH DEAN, CCIM
(816) 701 5012
jdean@copaken-brooks.com



SUITE 1134

1134 W. Cambridge Circle Drive
 Kansas City, Kansas

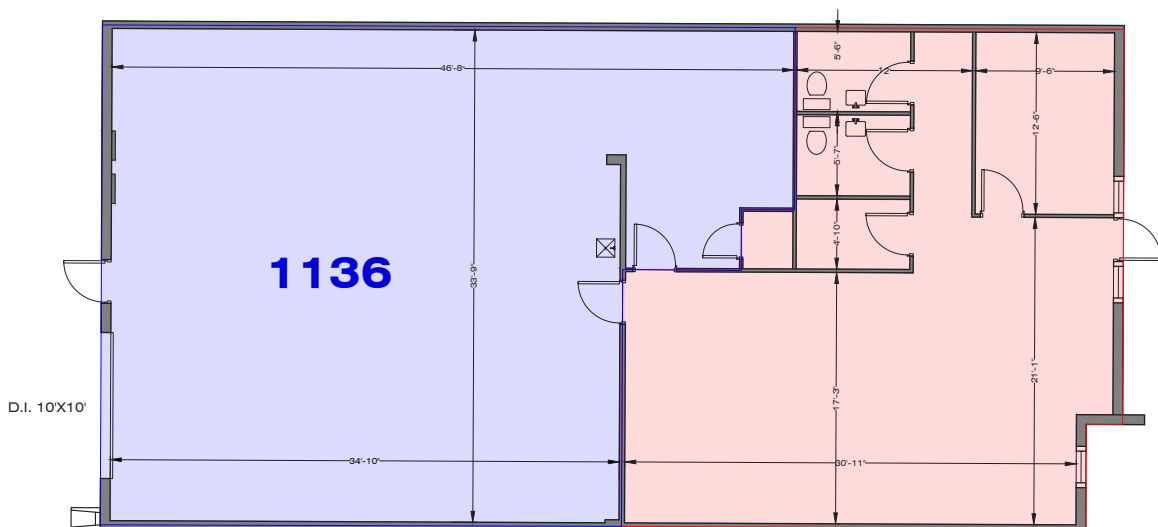
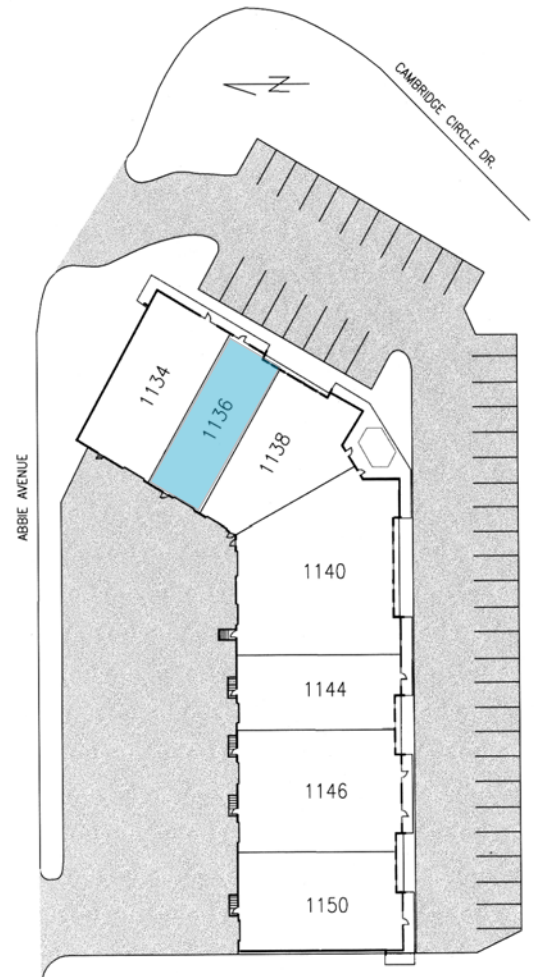
- 1,814 SF Available
 1,583 SF office and 231 SF warehouse
- One (10' x 10') Drive in Door
- 16' clear height
- On-site parking



SUITE 1136

1136 W. Cambridge Circle Drive
 Kansas City, Kansas

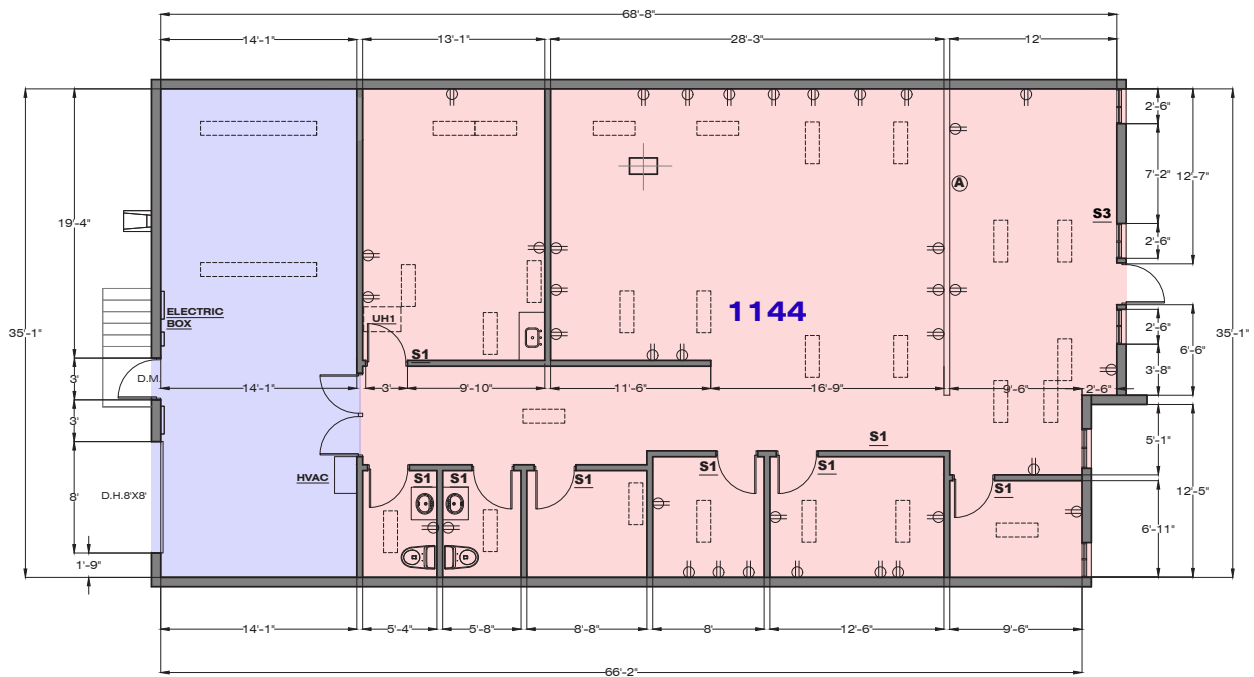
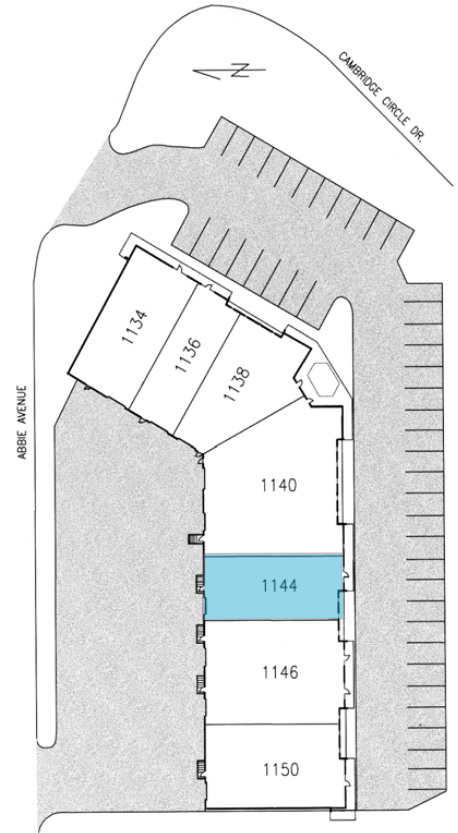
- 2,378 SF Available
 976 SF office and 1,402 SF warehouse
- One (10' x 10') Drive in Door
- 16' clear height
- On-site parking



SUITE 1144

1144 W. Cambridge Circle Drive
 Kansas City, Kansas

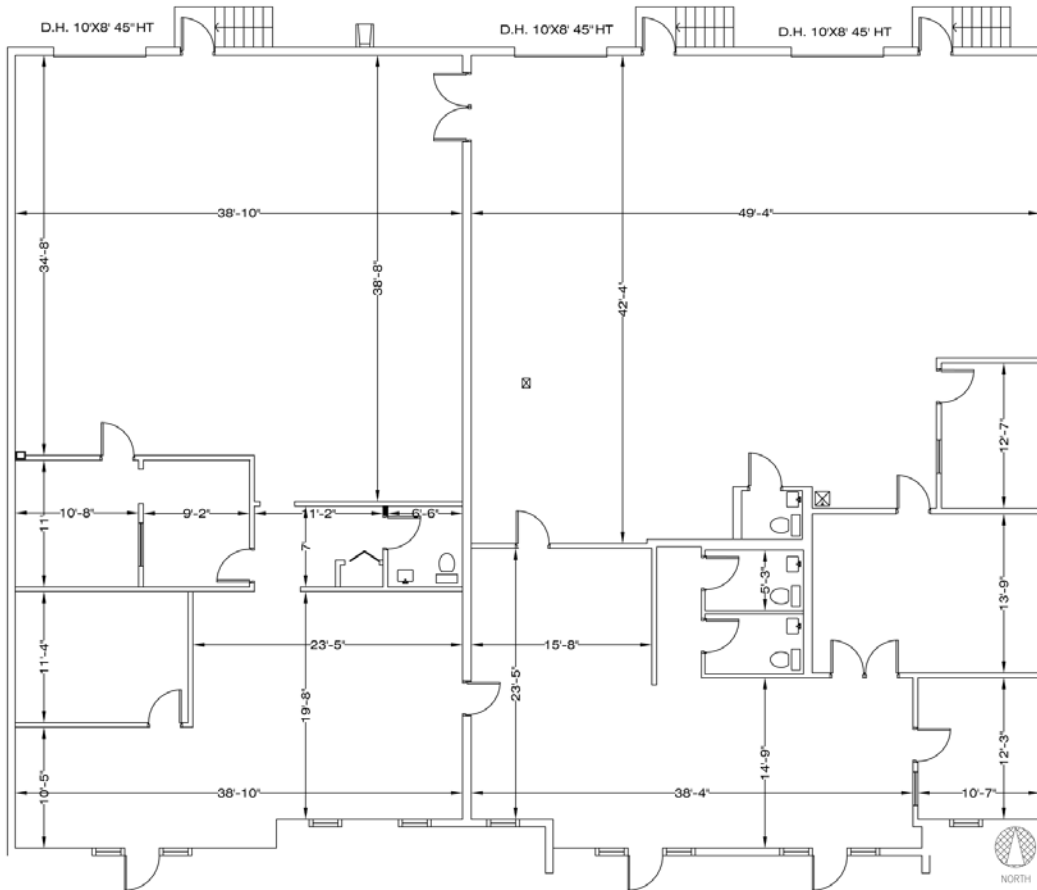
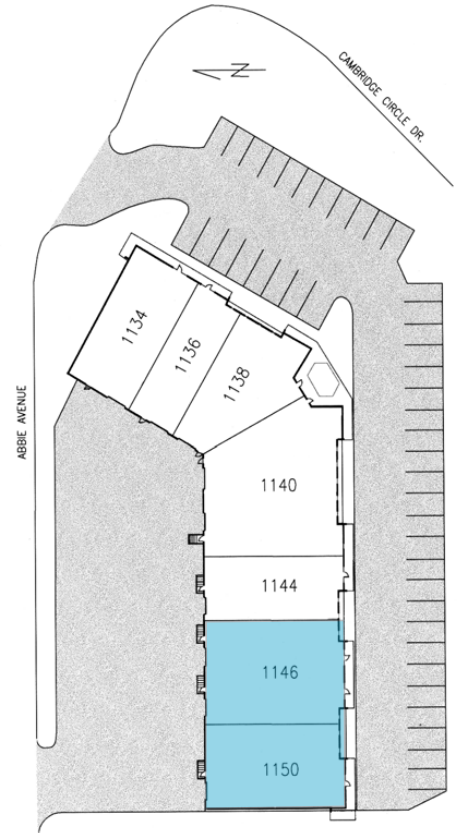
- 2,470 SF (Available 2/29/20)
 - 1,936 SF office and 534 SF warehouse
- One (8' x 8') dock-high loading doors
- 16' clear height
- On-site parking



SUITE 1146-1150

1146-1150 W. Cambridge Circle Drive
 Kansas City, Kansas

- 6,213 SF Available
 2,625 SF office and 3,588 SF warehouse
- Three (8' x 10') dock-high loading doors
- 16' clear height
- On-site parking



OFFICE/INDUSTRIAL SPACE AVAILABLE



LEASING CONTACT

JEREMIAH DEAN, CCIM

(816) 701 5012

jdean@copaken-brooks.com

All information furnished regarding property for sale or lease is from sources deemed reliable, but no warranty or representation is made as to the accuracy thereof and the same is subject to errors, omissions, changes of prices, rental or other conditions, prior sale or lease, or withdrawal without notice.