

CAMBRIDGE BUSINESS PARK - BUSINESS CENTER 4



OFFICE/INDUSTRIAL HIGHLIGHTS

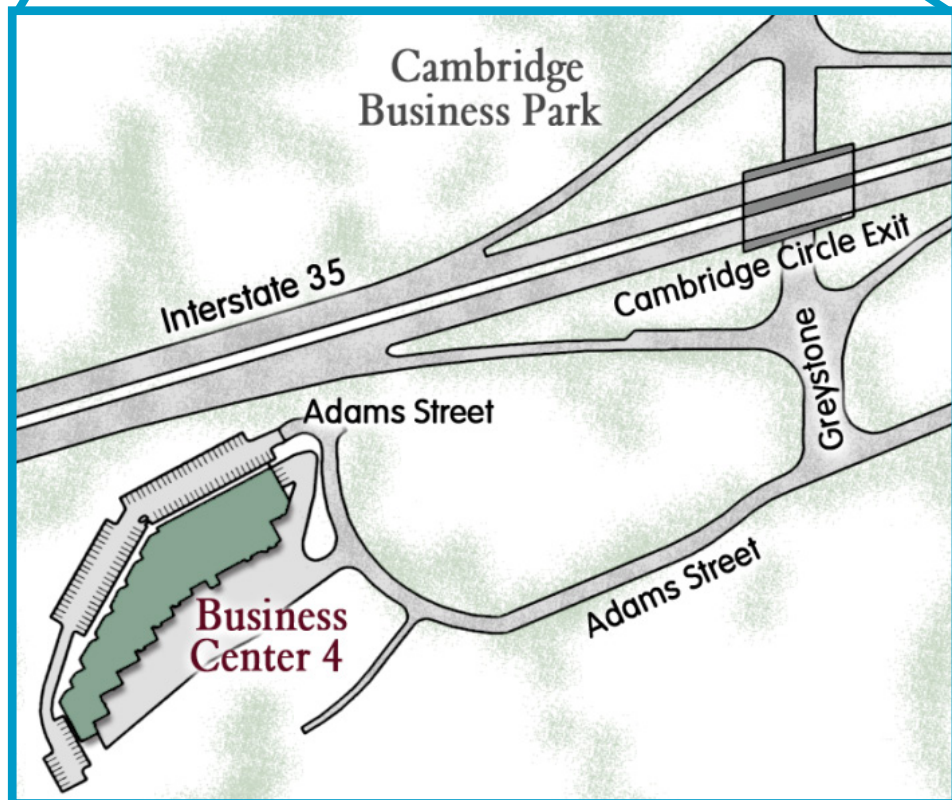
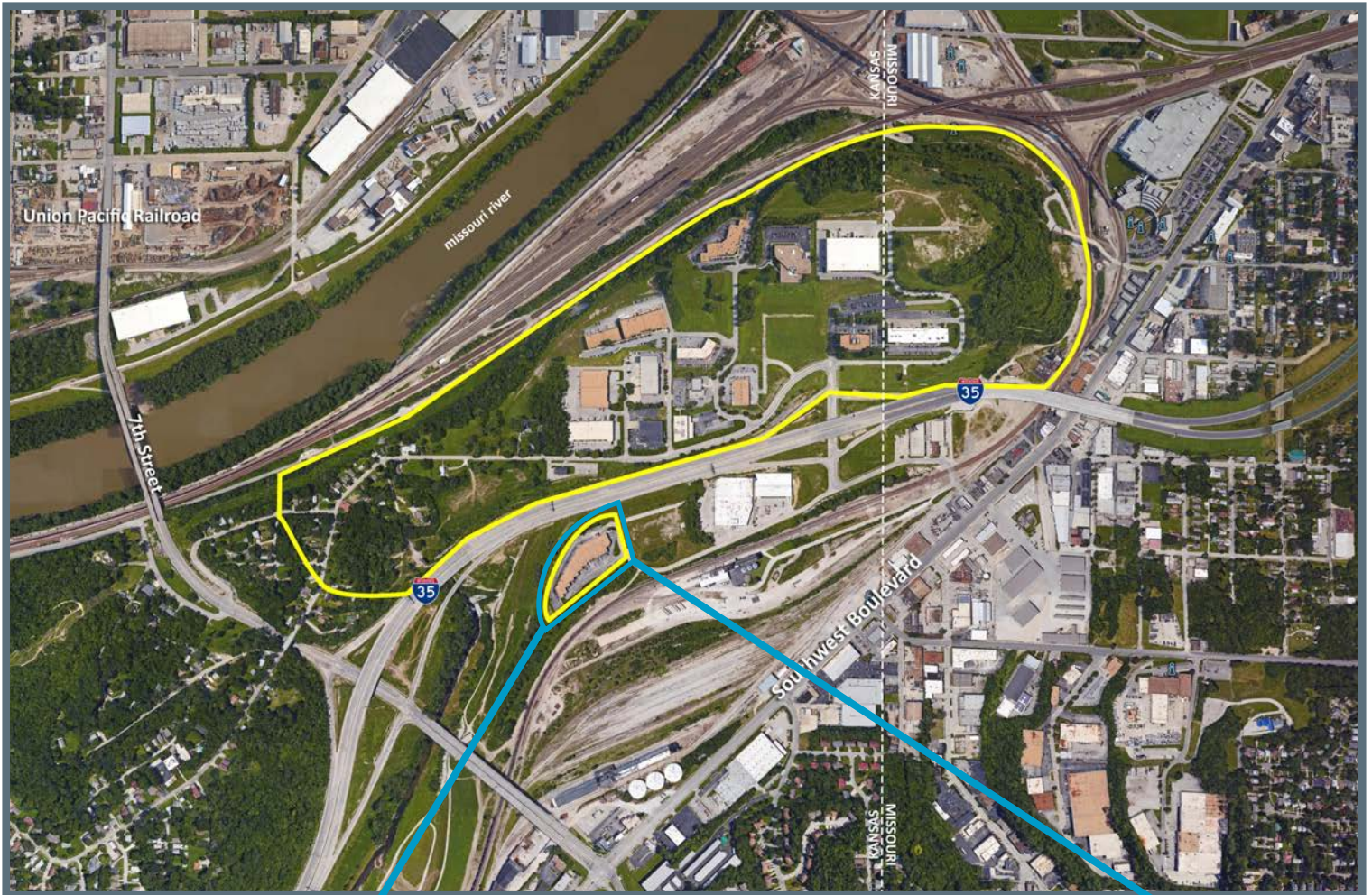
- 44,425 SF Office/Warehouse Center with highway-visible signage
- Accommodates large and small businesses
- Instant accessibility to Interstate 35 and the city's primary thoroughfares
- Appropriate for high-tech, showroom, sales/service, warehouse and office applications
- Positioned in well-maintained and secured business park setting
- Ample on-site parking
- Great location central to the city's major thoroughfares; moments from the Plaza, Crown Center, Westport and Downtown

LEASING CONTACTS

LARRY MCMILLIN

(816) 218 5073

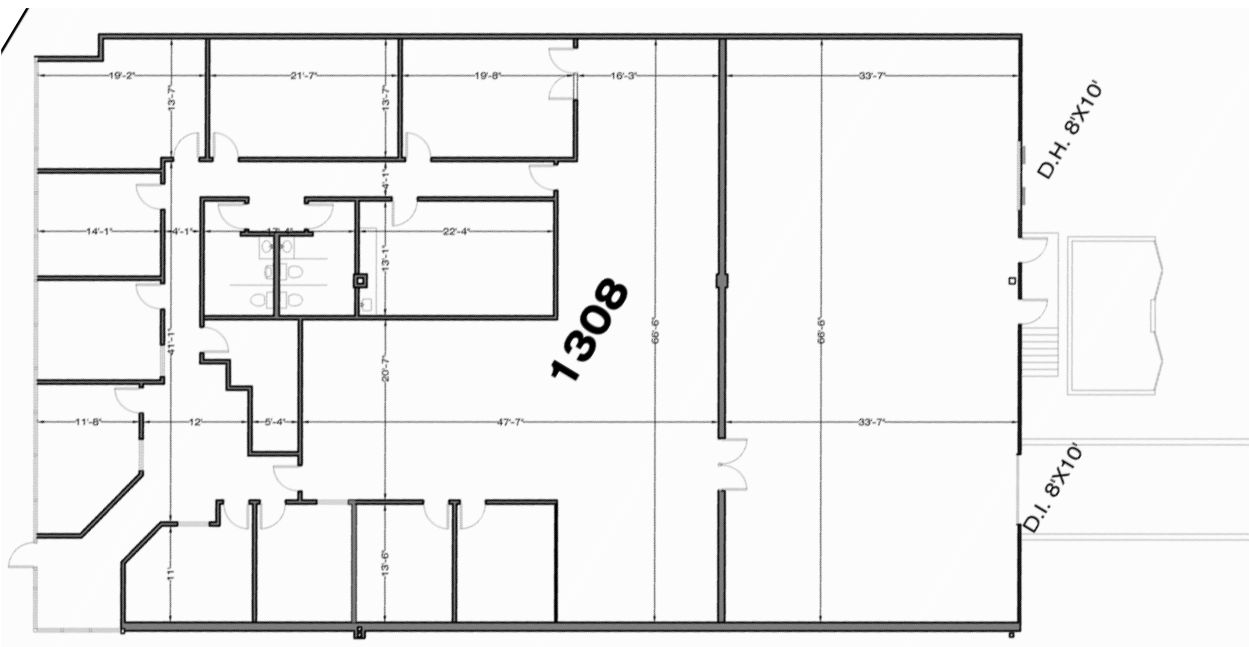
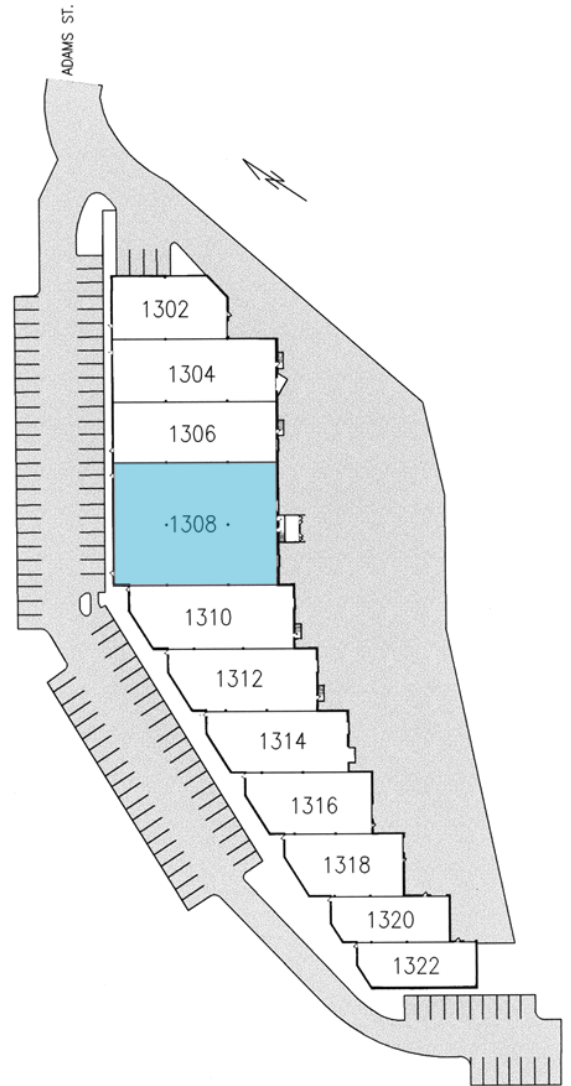
lmcmillin@copaken-brooks.com



SUITE 1308

1308 Adams, Kansas City, Kansas

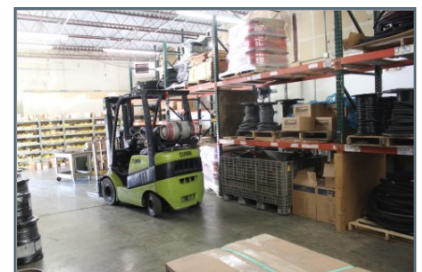
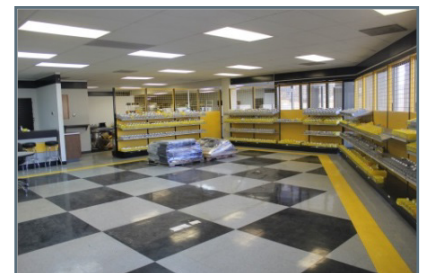
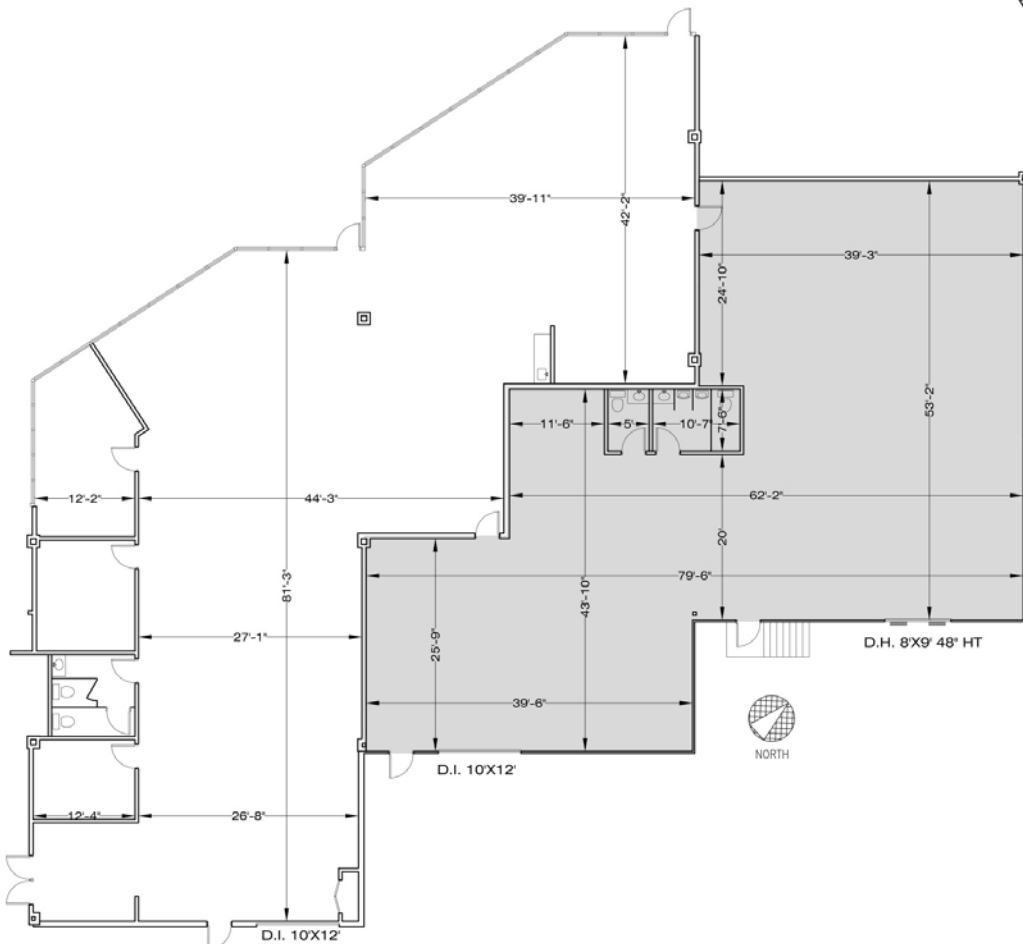
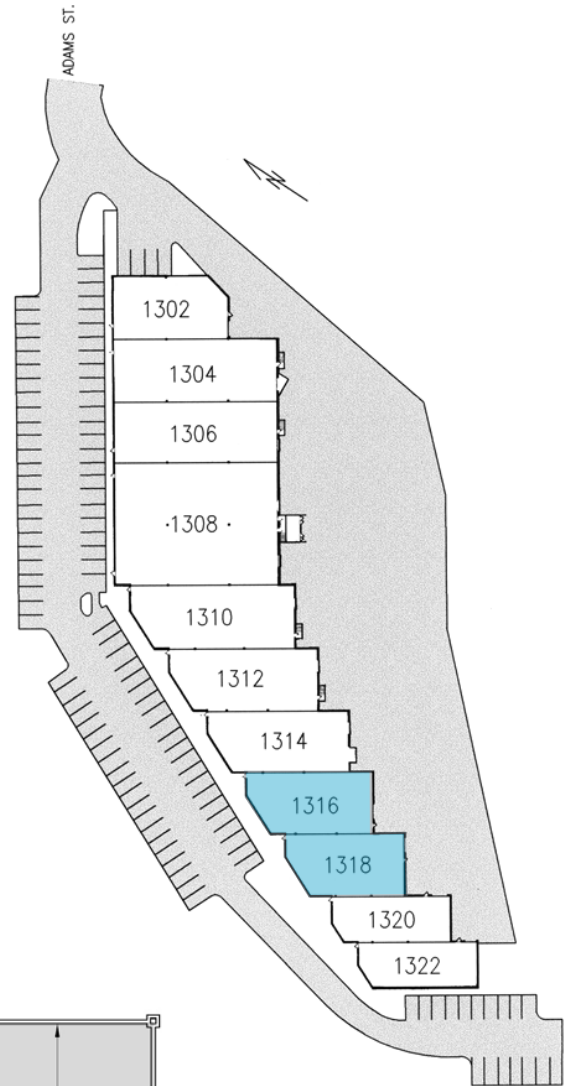
- 7,567 SF Available
- 5,268 SF Office and 2,299 SF Warehouse
- One (8' x 10') drive-in loading door
- One (8' x 10') dock-high loading door
- 16' clear height
- On-site parking



SUITE 1316-1318

1316-1318 Adams, Kansas City, Kansas

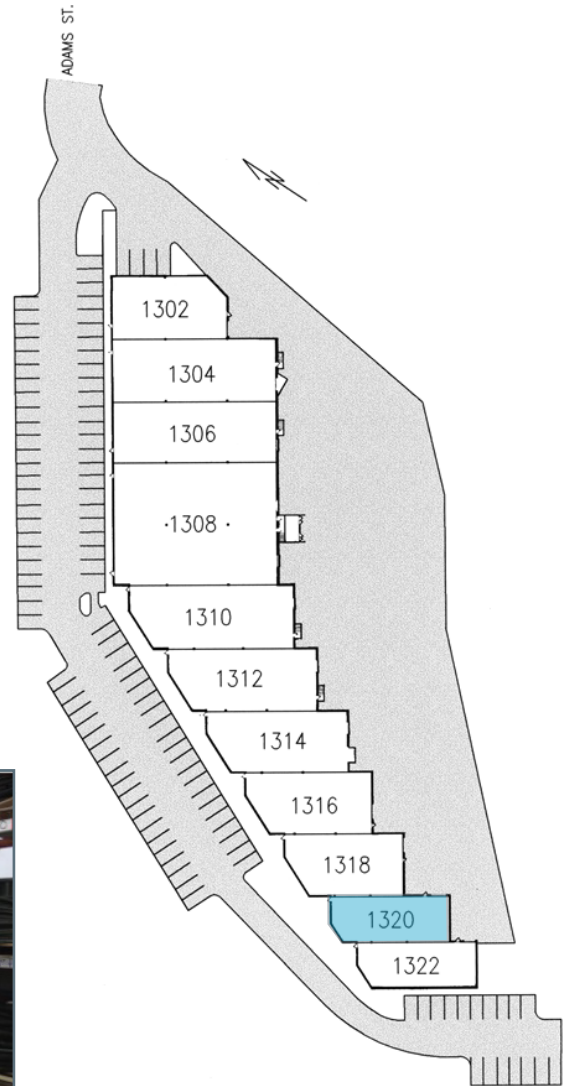
- 8,528 SF Available
- 4,924 SF office and 3,604 SF warehouse
- Two (10' x 12') drive-in
- One (8' x 9') dock-high loading doors
- 16' clear height
- Interstate visible signage
- On-site parking



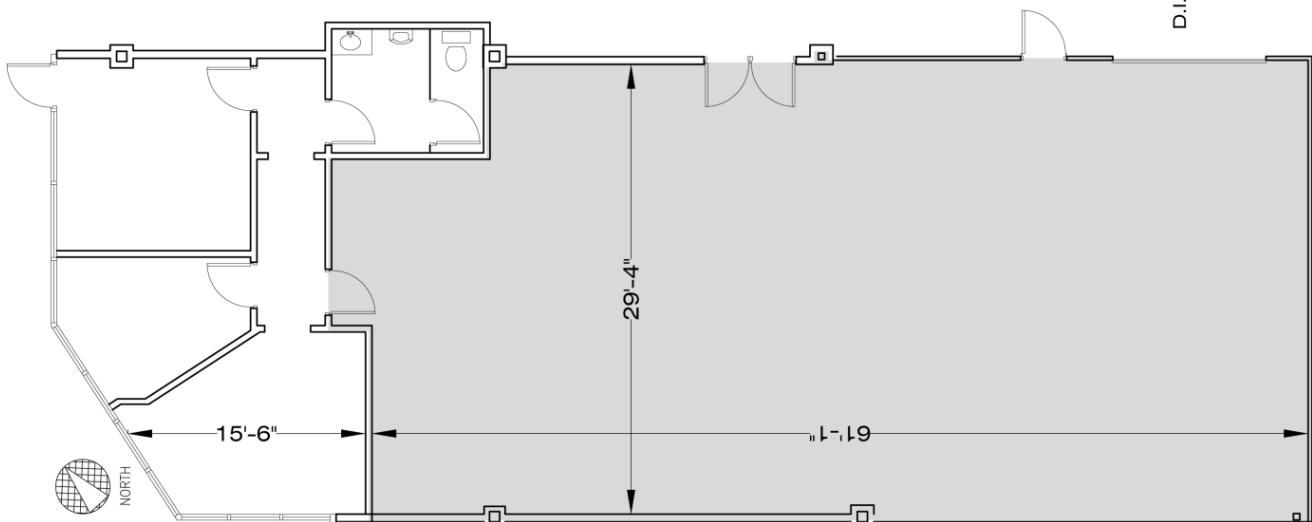
SUITE 1320

1320 Adams, Kansas City, Kansas

- 2,452 SF Available
624 SF office and 1,828 SF warehouse
- One (8' x 10') drive-in loading door
- 16' clear height
- On-site parking



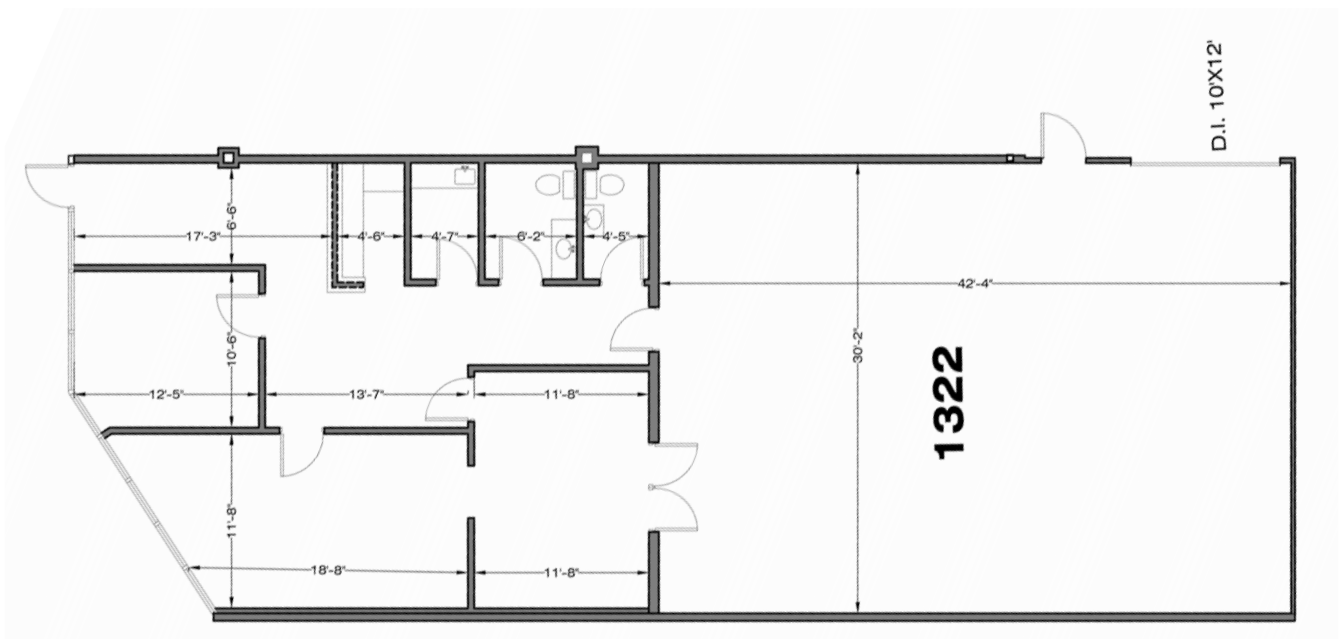
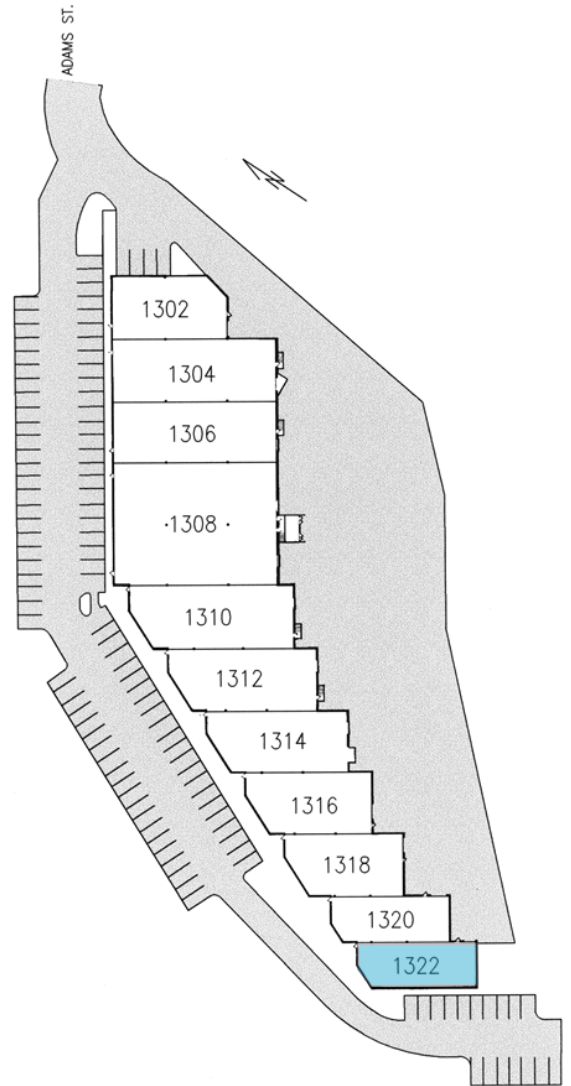
D.I. 10X12'



SUITE 1322

1322 Adams, Kansas City, Kansas

- 2,452 SF Available
624 SF office and 1,828 SF warehouse
- One (8' x 10') drive-in loading door
- 16' clear height
- On-site parking



OFFICE/INDUSTRIAL SPACE AVAILABLE



LEASING CONTACT

LARRY MCMILLIN

(816) 218 5073

lmcmillin@copaken-brooks.com

All information furnished regarding property for sale or lease is from sources deemed reliable, but no warranty or representation is made as to the accuracy thereof and the same is subject to errors, omissions, changes of prices, rental or other conditions, prior sale or lease, or withdrawal without notice.