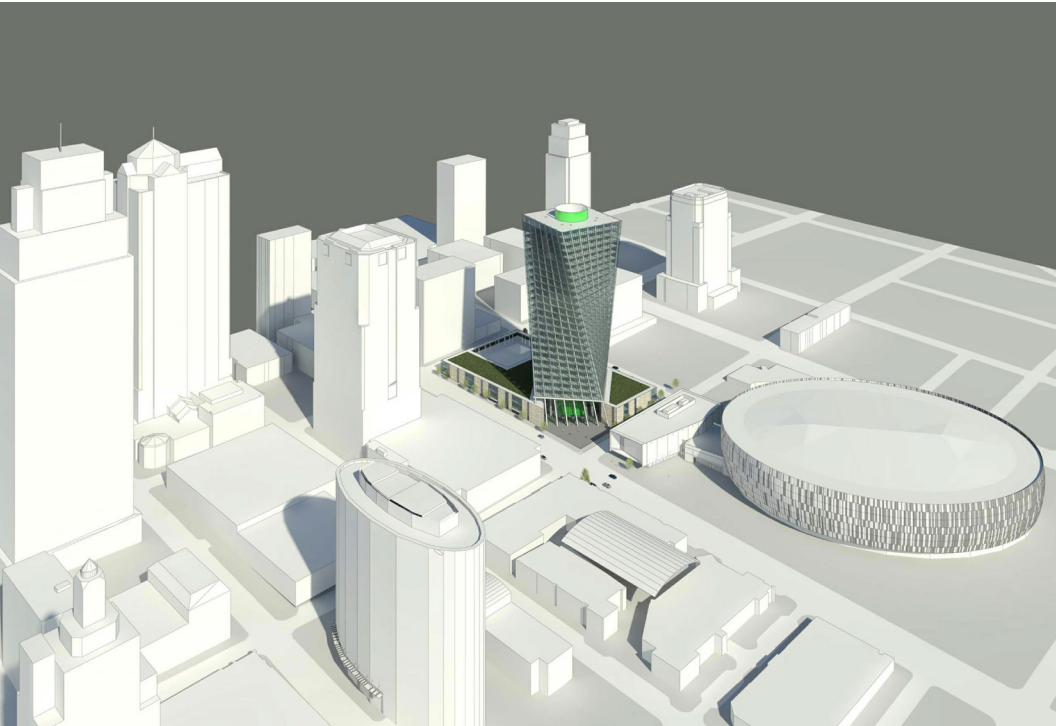


13TH & GRAND | CENTRAL BUSINESS DISTRICT

KANSAS CITY, MISSOURI



Features:

- 525,000 SF
- 25 stories
- 21,000 SF floor plates
- Enclosed parking
- First-floor retail
- Ideal build-to-suit and corporate headquarters location



13TH & GRAND | CENTRAL BUSINESS DISTRICT

KANSAS CITY, MISSOURI

